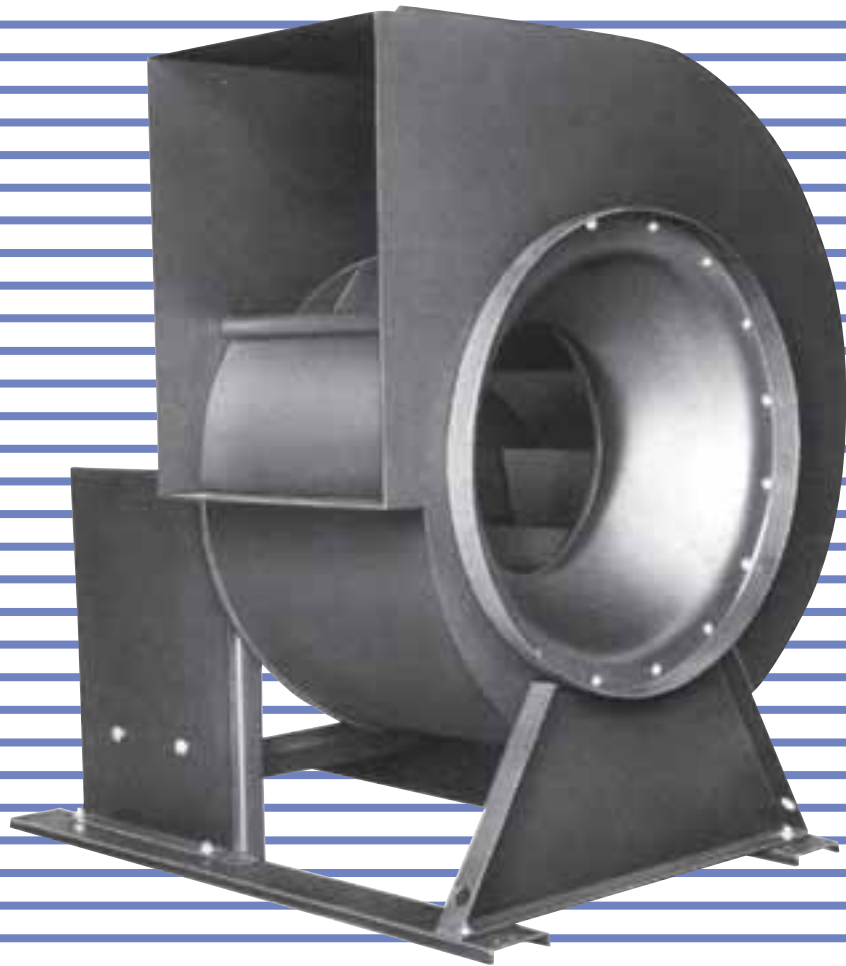


Series 7500 Vent Sets

Design 7510 Airfoil

Design 7520 BI

Design 7530 Single Camber



CML Northern Blower Inc. is one of the largest industrial fan companies in North America. In all that we do we are committed to the construction of an excellent product and the provision of outstanding customer service.

Northern Blower quality is a tradition. From our first day we have devoted our best efforts to the production of high grade fan equipment. Every day we strive to improve.

Our sales representatives are located coast-to-coast across the continent. Backed by the factory sales team, Northern Blower representatives are ready to provide product information and application advice whenever you need it.

CML NORTHERN BLOWER

A handwritten signature in black ink, appearing to read "G. Christie", written over a horizontal line.

Gordon Christie
PRESIDENT/CEO

Series 7500 Vent Sets

The Series 7500 Vent Set is a compact, self-contained factory assembled and tested unit featuring high efficiency and quiet operation.

**Commercial air conditioning systems,
general supply and exhaust
ventilation:**

Public Buildings
Hospitals
Warehouses
Offices
Department Stores
Schools

Design Features	2
General Information	3
Accessories	4
Selection	5
7510 Performance Data	6
7520 Performance Data	12
7530 Performance Data	18
Dimensions	19
Sound Data	20



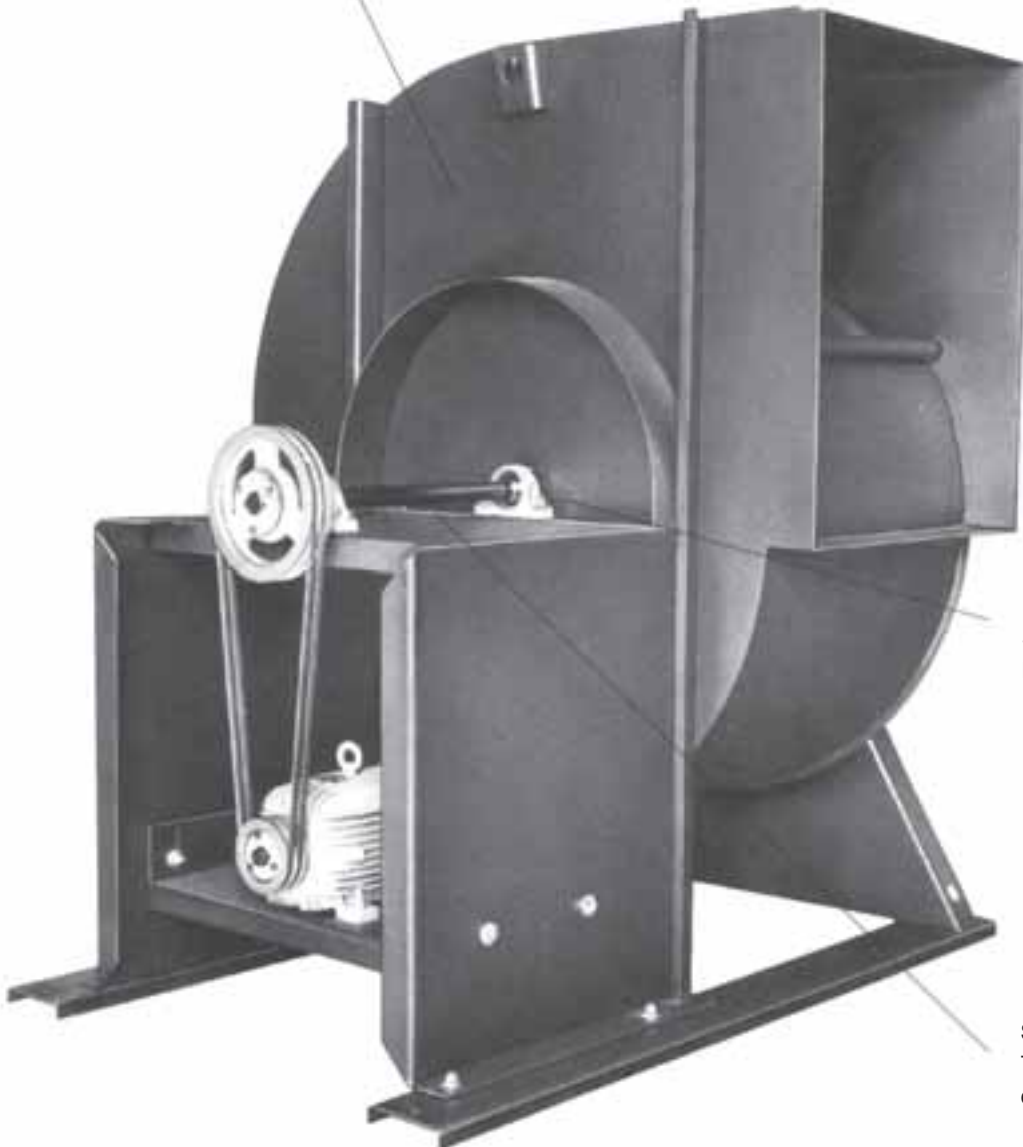
CML Northern Blower Inc. certifies that the Series 7500, Design 7510 Airfoil Vent Set pages 6-11, and Design 7520 Backward Inclined Vent Set, pages 12-17, shown herein are licensed to bear the AMCA seal. Note that the Design 7530, Single Camber Wheel, page 18 is not licensed to bear the AMCA seal. The ratings shown are based on tests and procedures performed in accordance with AMCA publication 211 and AMCA publication 311 and comply with the requirements of the AMCA Certified Ratings program.

Housing & Framing

Sizes 1225-1825, 7 position adjustable,
Sizes 2000-3650, 7 position fixed
discharge, rugged heavy gauge welded
steel construction.

Wheel

Three designs are available:
Design 7510 airfoil wheel, design 7520
single thickness backward inclined wheel,
and design 7530 single thickness, single
camber, airfoil wheel.



Bearings

Single row self aligning grease
lubricated ball bearings.

Shafts

Turned ground and polished to close
dimensional tolerance.

Balancing

Wheels are dynamically balanced to
ANSI S2.19-1989 specifications for
smooth operation.

Shafts and Bearings

Shafts

Selected to have suitable strength and operate well below the first critical speed for maximum RPM.

Bearings

Antifriction, grease lubricated, self aligning ball bearings, manufactured to internationally adopted standards by companies having worldwide acceptance and support services. Bearings are selected for continuous belt driven operation with a generous bearing life throughout each full range.



Capacities

7510	200 CFM to 22,000 CFM
7520	300 CFM to 22,000 CFM
7530	200 CFM to 2,500 CFM

Pressures

7510	to 4" S.P. (Size 1225 - 3650)
7520	to 4" S.P. (Size 1225 - 3650)
7530	to 4" S.P. (Size 912 - 1225)

Temperatures

Operating Temperatures to 150° F

Design 7510 Airfoil Wheel

The Northern Blower Airfoil wheel is designed for high operating efficiency. Blades are die formed hollow airfoil sections reinforced as required for class of duty. Continuously welded steel construction is standard. Available from 12 1/4" to 36 1/2" diameters.



Design 7520 Centrifugal BI Wheel

The Northern Blower BI wheel is ruggedly designed for high operating efficiency. Blades are formed from heavy gauge single thickness sheets. Continuously welded steel construction is standard. Available from 12 1/4" to 36 1/2" diameters.



Design 7530 Single Camber Wheel

The wheel is a welded steel construction with die formed single thickness, single camber, airfoil blades. Available in 9 1/8" and 12 1/4" diameters.



Flush Access Door

Access door mounted flush to the fan scroll. With spot welded construction, the door is secured with sheet metal screws. With continuously welded construction, the door is secured with bolted clips; an optional quick release handle system is also available.



Inlet Screen

Steel screen mounted to the inlet cone.



Gravity Damper

Dampers are closed by gravity when the fan is not operating to prevent backdraft and the entry of rain or snow.



Weatherhood and Belt Guard

Covers the motor, drive, shaft and bearings for safety and weather protection.



Additional Accessories

- Spark Resistant Construction
- Protective Coatings
- Extended Grease Fittings
- Motor and Drive Mounting
- Special Metals
- Housing Drain
- Extension Channels
- Isolators

Fan Selection at Elevated Temperature and Altitude

Fan Selection Tables

Ratings shown in the Performance Tables are based on standard air density of .075 pounds per cubic foot at the fan inlet. Standard air is dry air at 70°F and 29.92" Hg barometric pressure. When air density varies from standard, due to temperature or altitude changes, the Air Density Correction Factor from Table 1 is applied. Refer to the sample selection that follows.

Note that data in the selection tables does not include the effects of accessories such as inlet dampers, outlet dampers, screens, or other components in the air stream.

Table 1

Air Density Correction Factor							
Air Temp °F	Elevation (Feet) above Sea Level						
	0	500	1000	2000	3000	4000	5000
-40°	.79	.81	.82	.85	.88	.92	.95
0°	.87	.88	.90	.93	.97	1.00	1.04
40°	.94	.96	.98	1.01	1.05	1.09	1.13
70°	1.00	1.02	1.04	1.08	1.12	1.16	1.20
100°	1.06	1.08	1.10	1.14	1.18	1.22	1.27
140°	1.13	1.15	1.17	1.22	1.26	1.31	1.36

Sample Selection of a Belt Drive Fan

Select a 7510 fan for the operating conditions of 3000 CFM at 2-1/2" SP, 70°F and 5000 feet elevation.

- 1) Multiply the Operating SP by the Air Density Correction Factor (Table 3) to obtain Equivalent SP:

$$\begin{aligned} \text{Equivalent SP} &= \text{Operating SP} \times \text{Air Density Corr. Factor} \\ &= 2\text{-}1/2" \times 1.20 = 3" \end{aligned}$$

- 2) From the Performance Tables, select the fan size. For 3000 CFM at 3" SP an efficient selection would be a size 1825 fan. From the Performance Table given on page 8, the selected fan performance is 1682 RPM and 1.85 BHP at standard temperature and pressure.

- 3) Divide the Equivalent BHP by the Air Density Correction Factor to obtain the Operating BHP:

$$\begin{aligned} \text{Operating BHP} &= \frac{\text{Equivalent BHP}}{\text{Air Density Correction Factor}} \\ &= \frac{1.85}{1.20} = 1.54 \text{ BHP} \end{aligned}$$

Wheel Diameter = 12.25 in.
 Outlet Area = 0.86 sq. ft. inside
 Maximum BHP = .053 x (RPM/1000)³
 Tip Speed, fpm = 3.21 x RPM
 Maximum RPM 3047

Size
1225 SISW

Design 7510 Airfoil Vent Sets

Volume O.Vel		1/4"SP		1/2"SP		3/4"SP		1"SP		1-1/2"SP		2"SP		2-1/2"SP		3"SP		3-1/2"SP		4"SP	
CFM	FPM	RPM	BHP	RPM	BHP	RPM	BHP	RPM	BHP	RPM	BHP	RPM	BHP	RPM	BHP	RPM	BHP	RPM	BHP	RPM	BHP
200	232	669	0.01																		
300	348	694	0.02	951	0.04																
400	464	751	0.02	973	0.04	1173	0.07	1337	0.10												
500	580	834	0.03	1015	0.05	1195	0.08	1362	0.12	1639	0.19										
600	696	913	0.04	1090	0.07	1236	0.10	1387	0.13	1665	0.21	1902	0.30								
700	812	1004	0.05	1174	0.08	1306	0.12	1431	0.15	1688	0.23	1925	0.32	2133	0.42	2315	0.52				
800	928	1105	0.07	1252	0.10	1390	0.14	1501	0.17	1724	0.26	1946	0.35	2154	0.46	2343	0.57	2515	0.69	2672	0.80
900	1044	1210	0.09	1336	0.12	1472	0.17	1585	0.21	1778	0.29	1979	0.39	2177	0.50	2365	0.61	2539	0.74	2701	0.87
1000	1160	1317	0.11	1430	0.15	1549	0.20	1668	0.24	1854	0.33	2029	0.43	2210	0.54	2387	0.66	2558	0.79	2722	0.92
1100	1276	1428	0.14	1530	0.18	1633	0.23	1746	0.28	1939	0.38	2097	0.48	2257	0.59	2422	0.71	2584	0.84	2742	0.98
1200	1392	1540	0.17	1633	0.21	1727	0.27	1825	0.32	2022	0.43	2178	0.54	2321	0.65	2469	0.77	2620	0.90	2770	1.04
1300	1508	1654	0.21	1739	0.26	1826	0.31	1913	0.37	2101	0.49	2263	0.60	2399	0.72	2532	0.84	2668	0.97	2808	1.11
1400	1624	1768	0.25	1847	0.30	1928	0.36	2008	0.42	2178	0.54	2347	0.67	2485	0.80	2608	0.92	2731	1.05	2857	1.19
1500	1740	1884	0.30	1957	0.35	2032	0.41	2107	0.47	2260	0.61	2424	0.75	2569	0.88	2692	1.01	2806	1.15	2921	1.29
1600	1856	2000	0.36	2068	0.41	2138	0.47	2208	0.54	2349	0.68	2501	0.82	2649	0.97	2777	1.11	2889	1.25	2997	1.39
1700	1972	2117	0.42	2181	0.48	2246	0.54	2312	0.61	2444	0.75	2582	0.91	2727	1.06	2860	1.22	2974	1.37		
1800	2088	2234	0.49	2294	0.55	2356	0.62	2418	0.69	2542	0.84	2669	1.00	2804	1.16	2939	1.33				
1900	2204	2352	0.57	2409	0.63	2466	0.70	2525	0.78	2643	0.93	2761	1.09	2885	1.27	3016	1.44				
2000	2320	2470	0.66	2524	0.73	2578	0.80	2634	0.87	2746	1.03	2857	1.20	2971	1.38						
2100	2436	2588	0.76	2640	0.83	2691	0.90	2744	0.98	2850	1.14	2956	1.32								
2200	2552	2707	0.86	2755	0.93	2805	1.01	2854	1.09	2955	1.26										
2300	2668	2825	0.98	2872	1.05	2919	1.13	2966	1.21												
2400	2784	2944	1.10	2989	1.18	3034	1.26														

Power rating (BHP) does not include drive losses. Performance ratings do not include the effects of appurtenances in the airstream. Performance shown is for installation type B-Free inlet, Ducted outlet.

Wheel Diameter = 13.50 in.
 Outlet Area = 1.05 sq. ft. inside
 Maximum BHP = .087 x (RPM/1000)³
 Tip Speed, fpm = 3.53 x RPM
 Maximum RPM 2829

Size
1350 SISW

Design 7510 Airfoil Vent Sets

Volume O.Vel		1/4"SP		1/2"SP		3/4"SP		1"SP		1-1/2"SP		2"SP		2-1/2"SP		3"SP		3-1/2"SP		4"SP		
CFM	FPM	RPM	BHP	RPM	BHP	RPM	BHP	RPM	BHP	RPM	BHP	RPM	BHP	RPM	BHP	RPM	BHP	RPM	BHP	RPM	BHP	
400	382	626	0.02																			
500	477	677	0.03	857	0.05																	
600	572	737	0.03	902	0.06	1045	0.09															
700	668	805	0.04	953	0.07	1088	0.11	1209	0.15													
800	763	878	0.06	1011	0.09	1137	0.13	1252	0.16	1460	0.25											
900	859	953	0.07	1076	0.11	1191	0.15	1301	0.19	1497	0.28	1679	0.38									
1000	954	1031	0.09	1146	0.13	1251	0.17	1353	0.21	1543	0.31	1712	0.41	1875	0.52							
1100	1049	1111	0.11	1218	0.15	1316	0.20	1410	0.24	1592	0.34	1755	0.45	1907	0.57	2055	0.69					
1200	1145	1192	0.13	1292	0.18	1385	0.23	1473	0.28	1643	0.38	1803	0.50	1948	0.62	2087	0.74	2222	0.88			
1300	1240	1274	0.16	1369	0.21	1457	0.26	1540	0.32	1699	0.42	1852	0.54	1995	0.67	2127	0.80	2255	0.94	2380	1.08	
1400	1335	1357	0.19	1447	0.25	1531	0.30	1610	0.36	1759	0.47	1904	0.60	2043	0.73	2173	0.86	2295	1.01	2414	1.16	
1500	1431	1441	0.23	1526	0.29	1606	0.35	1681	0.41	1824	0.53	1960	0.65	2094	0.79	2221	0.93	2340	1.08	2454	1.23	
1600	1526	1525	0.27	1606	0.33	1682	0.39	1755	0.46	1891	0.59	2020	0.72	2147	0.86	2271	1.00	2389	1.16	2500	1.31	
1700	1622	1610	0.31	1687	0.38	1760	0.45	1829	0.51	1960	0.65	2084	0.79	2204	0.93	2323	1.08	2438	1.24	2548	1.40	
1800	1717	1695	0.37	1769	0.43	1839	0.50	1906	0.58	2031	0.72	2150	0.86	2265	1.01	2378	1.17	2489	1.33	2597	1.50	
1900	1812	1781	0.42	1852	0.49	1919	0.57	1983	0.64	2104	0.79	2219	0.94	2329	1.10	2437	1.26	2543	1.42	2648	1.60	
2000	1908	1868	0.48	1935	0.56	2000	0.64	2061	0.71	2178	0.87	2289	1.03	2395	1.19	2498	1.36	2600	1.53	2701	1.70	
2100	2003	1954	0.55	2019	0.63	2081	0.71	2141	0.79	2253	0.96	2360	1.13	2463	1.29	2562	1.46	2660	1.64	2757	1.82	
2200	2099	2041	0.63	2103	0.71	2163	0.79	2220	0.88	2330	1.05	2433	1.23	2533	1.40	2629	1.58	2723	1.76	2816	1.94	
2300	2194	2128	0.71	2188	0.79	2246	0.88	2301	0.97	2407	1.15	2507	1.33	2604	1.52	2697	1.70	2788	1.88			
2400	2289	2215	0.80	2273	0.89	2329	0.98	2382	1.07	2485	1.26	2582	1.45	2676	1.64	2767	1.83					
2500	2385	2302	0.89	2358	0.99	2412	1.08	2464	1.18	2564	1.37	2658	1.57	2749	1.77							
2600	2480	2390	1.00	2444	1.09	2496	1.19	2546	1.29	2643	1.49	2735	1.70	2824	1.90							
2800	2671	2566	1.23	2617	1.33	2665	1.44	2712	1.54	2804	1.76											
3000	2862	2742	1.50	2789	1.61																	

Power rating (BHP) does not include drive losses. Performance ratings do not include the effects of appurtenances in the airstream. Performance shown is for installation type B-Free inlet, Ducted outlet.



Wheel Diameter = 15.00 in.
 Outlet Area = 1.29 sq. ft. inside
 Maximum BHP = .147 x (RPM/1000)³
 Tip Speed, fpm = 3.93 x RPM

Maximum RPM 2387

Size
1500 SISW

Design 7510 Airfoil Vent Sets

Volume O.Vel		1/4"SP		1/2"SP		3/4"SP		1"SP		1-1/2"SP		2"SP		2-1/2"SP		3"SP		3-1/2"SP		4"SP	
CFM	FPM	RPM	BHP	RPM	BHP	RPM	BHP	RPM	BHP	RPM	BHP	RPM	BHP	RPM	BHP	RPM	BHP	RPM	BHP	RPM	BHP
600	464	602	0.03	766	0.06																
700	541	644	0.04	797	0.07	930	0.11														
800	618	692	0.05	833	0.08	957	0.12	1072	0.17												
900	695	743	0.06	872	0.10	991	0.14	1098	0.19												
1000	773	797	0.07	916	0.11	1028	0.16	1131	0.21	1317	0.31										
1100	850	852	0.09	963	0.13	1067	0.18	1167	0.23	1344	0.34	1509	0.46								
1200	927	908	0.10	1013	0.15	1110	0.20	1204	0.25	1376	0.37	1531	0.50								
1300	1004	966	0.12	1065	0.18	1156	0.23	1244	0.28	1412	0.40	1561	0.54	1702	0.68						
1400	1082	1024	0.15	1119	0.20	1206	0.26	1288	0.31	1447	0.44	1594	0.58	1728	0.72	1858	0.88				
1500	1159	1083	0.17	1173	0.23	1256	0.29	1335	0.35	1486	0.48	1629	0.62	1759	0.77	1884	0.93	2003	1.10		
1600	1236	1143	0.20	1229	0.26	1309	0.32	1384	0.39	1527	0.52	1665	0.67	1794	0.82	1913	0.99	2028	1.16	2141	1.34
1700	1314	1204	0.23	1286	0.30	1362	0.36	1434	0.43	1570	0.57	1702	0.72	1829	0.88	1946	1.05	2057	1.22	2165	1.41
1800	1391	1265	0.26	1343	0.33	1416	0.40	1486	0.48	1616	0.62	1742	0.78	1865	0.94	1981	1.11	2089	1.29	2193	1.48
1900	1468	1326	0.30	1401	0.37	1472	0.45	1538	0.53	1664	0.68	1785	0.84	1903	1.00	2016	1.18	2123	1.37	2225	1.56
2000	1545	1388	0.34	1460	0.42	1528	0.50	1593	0.58	1714	0.74	1829	0.90	1942	1.07	2053	1.26	2159	1.45	2259	1.64
2100	1623	1450	0.39	1519	0.47	1585	0.55	1647	0.64	1765	0.80	1876	0.97	1984	1.15	2091	1.34	2195	1.53	2294	1.73
2200	1700	1512	0.44	1579	0.52	1642	0.61	1703	0.70	1816	0.87	1924	1.05	2028	1.23	2131	1.42	2232	1.62	2329	1.82
2300	1777	1575	0.49	1639	0.58	1700	0.67	1759	0.76	1869	0.94	1974	1.13	2074	1.31	2173	1.51	2271	1.71	2365	1.92
2400	1854	1637	0.55	1700	0.64	1759	0.74	1816	0.83	1923	1.02	2024	1.21	2122	1.41	2217	1.60	2311	1.81		
2500	1932	1700	0.62	1760	0.71	1818	0.81	1873	0.91	1977	1.10	2076	1.30	2170	1.50	2263	1.71	2353	1.92		
2600	2009	1763	0.69	1822	0.78	1877	0.88	1931	0.99	2032	1.19	2128	1.40	2220	1.60	2310	1.81				
2800	2163	1890	0.84	1945	0.95	1997	1.05	2048	1.16	2144	1.38	2235	1.60	2323	1.82						
3000	2318	2017	1.02	2069	1.13	2118	1.24	2166	1.36	2257	1.59	2345	1.83								
3200	2472	2145	1.22	2193	1.34	2240	1.46	2286	1.58	2373	1.83										
3400	2627	2273	1.45	2319	1.57	2364	1.70														

Power rating (BHP) does not include drive losses. Performance ratings do not include the effects of appurtenances in the airstream. Performance shown is for installation type B-Free inlet, Ducted outlet.

Wheel Diameter = 16.50 in.
 Outlet Area = 1.56 sq. ft. inside
 Maximum BHP = .237 x (RPM/1000)³
 Tip Speed, fpm = 4.32 x RPM

Maximum RPM 2315

Size
1650 SISW

Design 7510 Airfoil Vent Sets

Volume O.Vel		1/4"SP		1/2"SP		3/4"SP		1"SP		1-1/2"SP		2"SP		2-1/2"SP		3"SP		3-1/2"SP		4"SP	
CFM	FPM	RPM	BHP	RPM	BHP	RPM	BHP	RPM	BHP	RPM	BHP	RPM	BHP	RPM	BHP	RPM	BHP	RPM	BHP	RPM	BHP
700	447	540	0.04	692	0.07																
800	511	570	0.04	713	0.08																
900	575	604	0.05	739	0.09	855	0.14														
1000	639	641	0.06	767	0.11	879	0.15	980	0.21												
1100	702	680	0.07	796	0.12	904	0.17	1001	0.23												
1200	766	720	0.09	829	0.13	931	0.19	1026	0.25	1195	0.38										
1300	830	761	0.10	864	0.15	960	0.21	1052	0.27	1215	0.40										
1400	894	803	0.12	901	0.17	992	0.23	1080	0.29	1238	0.43	1383	0.58								
1500	958	846	0.13	940	0.19	1026	0.26	1109	0.32	1264	0.46	1402	0.62	1535	0.79						
1600	1022	890	0.15	979	0.22	1061	0.28	1140	0.35	1290	0.50	1425	0.66	1552	0.83						
1700	1086	934	0.18	1020	0.24	1098	0.31	1173	0.38	1318	0.53	1450	0.70	1572	0.88	1690	1.06				
1800	1149	978	0.20	1060	0.27	1136	0.34	1208	0.42	1346	0.57	1477	0.74	1596	0.92	1709	1.12	1819	1.32		
1900	1213	1023	0.23	1102	0.30	1175	0.38	1244	0.46	1377	0.62	1504	0.79	1621	0.98	1731	1.17	1836	1.38	1941	1.59
2000	1277	1069	0.26	1145	0.34	1215	0.42	1282	0.50	1409	0.66	1532	0.84	1647	1.03	1755	1.23	1857	1.44	1958	1.66
2200	1405	1160	0.33	1231	0.41	1297	0.50	1359	0.59	1477	0.76	1591	0.95	1701	1.15	1807	1.36	1904	1.58	1999	1.81
2400	1533	1252	0.41	1319	0.50	1381	0.59	1440	0.69	1551	0.88	1656	1.08	1760	1.28	1860	1.50	1957	1.73	2048	1.97
2600	1660	1345	0.50	1408	0.60	1466	0.70	1522	0.80	1627	1.01	1727	1.22	1824	1.44	1918	1.66	2011	1.90	2101	2.15
2800	1788	1439	0.61	1498	0.71	1553	0.82	1606	0.93	1706	1.16	1801	1.38	1892	1.60	1981	1.84	2069	2.09	2155	2.34
3000	1916	1534	0.73	1589	0.84	1642	0.96	1692	1.08	1787	1.31	1877	1.55	1964	1.79	2048	2.04	2131	2.29	2213	2.56
3200	2043	1629	0.87	1681	0.99	1731	1.11	1779	1.24	1870	1.49	1956	1.74	2039	2.00	2119	2.26	2198	2.52	2275	2.79
3400	2171	1724	1.03	1774	1.16	1821	1.29	1867	1.42	1954	1.68	2037	1.95	2116	2.22	2193	2.49	2268	2.77		
3600	2299	1819	1.21	1867	1.34	1912	1.47	1956	1.61	2039	1.89	2119	2.18	2195	2.46	2269	2.75				
3800	2427	1915	1.40	1960	1.54	2004	1.68	2045	1.83	2126	2.13	2202	2.42	2276	2.73						
4000	2554	2011	1.62	2054	1.77	2096	1.92	2136	2.07	2213	2.38	2287	2.69								
4500	2873	2252	2.27	2291	2.43																

Power rating (BHP) does not include drive losses. Performance ratings do not include the effects of appurtenances in the airstream. Performance shown is for installation type B-Free inlet, Ducted outlet.



Wheel Diameter = 18.25 in.
 Outlet Area = 1.91 sq. ft. inside
 Maximum BHP = .391 x (RPM/1000)³
 Tip Speed, fpm = 4.78 x RPM

Size

1825 sisw

Maximum RPM 2093

Design 7510 Airfoil Vent Sets

Volume O.Vel		1/4"SP		1/2"SP		3/4"SP		1"SP		1-1/2"SP		2"SP		2-1/2"SP		3"SP		3-1/2"SP		4"SP	
CFM	FPM	RPM	BHP	RPM	BHP	RPM	BHP	RPM	BHP	RPM	BHP	RPM	BHP	RPM	BHP	RPM	BHP	RPM	BHP	RPM	BHP
1000	523	510	0.05	640	0.10																
1100	575	534	0.06	659	0.11	765	0.16														
1200	627	560	0.07	679	0.12	780	0.18														
1300	680	587	0.08	698	0.13	798	0.19	887	0.26												
1400	732	614	0.09	719	0.15	818	0.21	902	0.28												
1500	784	642	0.10	741	0.16	837	0.23	921	0.30												
1600	836	670	0.12	766	0.18	856	0.25	941	0.32	1087	0.47										
1700	889	699	0.13	792	0.20	877	0.27	960	0.34	1103	0.50										
1800	941	728	0.15	819	0.22	899	0.29	979	0.37	1121	0.53	1250	0.71								
1900	993	758	0.16	846	0.24	923	0.31	999	0.39	1140	0.57	1262	0.75								
2000	1045	788	0.18	874	0.26	949	0.34	1020	0.42	1159	0.60	1279	0.79	1396	0.99						
2100	1098	819	0.20	902	0.29	975	0.37	1043	0.45	1179	0.64	1298	0.83	1408	1.03						
2200	1150	851	0.22	930	0.31	1002	0.40	1067	0.49	1198	0.67	1317	0.88	1424	1.08	1529	1.30				
2400	1255	914	0.27	987	0.37	1057	0.47	1119	0.56	1239	0.75	1356	0.97	1461	1.19	1558	1.41	1654	1.65		
2600	1359	979	0.33	1046	0.43	1112	0.54	1173	0.64	1284	0.85	1395	1.07	1499	1.30	1594	1.54	1683	1.79	1772	2.04
2800	1464	1045	0.40	1106	0.50	1169	0.62	1228	0.73	1333	0.95	1436	1.18	1538	1.43	1633	1.68	1719	1.93	1802	2.20
3000	1568	1111	0.47	1168	0.58	1226	0.70	1284	0.83	1386	1.06	1481	1.30	1577	1.55	1671	1.82	1759	2.10	1839	2.37
3200	1673	1178	0.56	1231	0.67	1285	0.79	1340	0.93	1440	1.19	1531	1.44	1620	1.70	1710	1.97	1797	2.26	1878	2.55
3400	1777	1246	0.66	1295	0.77	1345	0.90	1397	1.04	1495	1.32	1583	1.59	1667	1.85	1752	2.14	1835	2.43	1917	2.74
3600	1882	1313	0.77	1360	0.89	1407	1.02	1456	1.16	1551	1.46	1636	1.75	1716	2.03	1796	2.31	1876	2.62	1955	2.94
3800	1986	1381	0.89	1425	1.01	1470	1.15	1515	1.30	1607	1.61	1691	1.92	1768	2.21	1844	2.51	1919	2.82	1995	3.15
4000	2091	1449	1.02	1491	1.15	1533	1.29	1576	1.44	1663	1.77	1746	2.10	1822	2.41	1894	2.72	1965	3.04	2037	3.37
4500	2352	1620	1.42	1657	1.56	1695	1.71	1732	1.87	1809	2.22	1886	2.60	1959	2.97	2028	3.32	2092	3.67		
5000	2614	1792	1.91	1826	2.07	1859	2.23	1893	2.40	1960	2.77	2030	3.17								
5500	2875	1964	2.51	1995	2.68	2026	2.86	2056	3.04												

Power rating (BHP) does not include drive losses. Performance ratings do not include the effects of appurtenances in the airstream. Performance shown is for installation type B-Free inlet, Ducted outlet.

Wheel Diameter = 20.00 in.
 Outlet Area = 2.29 sq. ft. inside
 Maximum BHP = .618 x (RPM/1000)³
 Tip Speed, fpm = 5.24 x RPM

Size

2000 sisw

Maximum RPM 1910

Design 7510 Airfoil Vent Sets

Volume O.Vel		1/4"SP		1/2"SP		3/4"SP		1"SP		1-1/2"SP		2"SP		2-1/2"SP		3"SP		3-1/2"SP		4"SP	
CFM	FPM	RPM	BHP	RPM	BHP	RPM	BHP	RPM	BHP	RPM	BHP	RPM	BHP	RPM	BHP	RPM	BHP	RPM	BHP	RPM	BHP
1300	566	483	0.07	598	0.13	697	0.19														
1400	609	502	0.08	613	0.14	706	0.21														
1500	653	523	0.09	628	0.15	719	0.22	805	0.30												
1600	696	543	0.10	643	0.17	734	0.24	814	0.31												
1700	740	564	0.11	659	0.18	749	0.26	826	0.33												
1800	783	586	0.12	676	0.20	763	0.27	840	0.36												
1900	827	607	0.14	695	0.21	778	0.29	855	0.38	990	0.56										
2000	870	629	0.15	714	0.23	793	0.31	870	0.40	1001	0.59										
2200	958	673	0.18	755	0.27	827	0.36	899	0.45	1028	0.65	1143	0.87								
2400	1045	719	0.22	797	0.32	865	0.41	931	0.51	1058	0.72	1167	0.94	1273	1.19						
2600	1132	766	0.26	840	0.36	905	0.47	966	0.57	1087	0.79	1196	1.03	1294	1.28	1392	1.54				
2800	1219	814	0.31	883	0.42	947	0.53	1004	0.64	1117	0.87	1225	1.12	1321	1.38	1411	1.65	1503	1.94		
3000	1306	863	0.36	927	0.48	989	0.60	1045	0.72	1150	0.96	1254	1.22	1350	1.49	1437	1.77	1521	2.06	1607	2.38
3200	1393	913	0.42	972	0.54	1031	0.67	1086	0.80	1186	1.05	1284	1.32	1380	1.61	1466	1.91	1546	2.20	1625	2.51
3400	1480	963	0.49	1018	0.61	1075	0.75	1128	0.89	1224	1.16	1316	1.44	1409	1.74	1495	2.04	1574	2.35	1649	2.67
3600	1567	1013	0.57	1065	0.70	1118	0.84	1171	0.99	1264	1.28	1351	1.56	1439	1.86	1524	2.19	1604	2.52	1677	2.84
3800	1654	1064	0.65	1113	0.79	1163	0.93	1213	1.09	1305	1.40	1388	1.69	1471	2.00	1554	2.34	1634	2.68	1707	3.03
4000	1741	1115	0.75	1161	0.89	1209	1.04	1257	1.20	1347	1.53	1427	1.84	1506	2.16	1585	2.50	1663	2.85	1736	3.21
4200	1828	1166	0.85	1210	0.99	1255	1.15	1301	1.32	1389	1.67	1468	2.00	1543	2.32	1617	2.67	1693	3.03	1765	3.41
4400	1915	1218	0.97	1260	1.11	1302	1.27	1345	1.44	1431	1.81	1509	2.16	1581	2.50	1652	2.85	1724	3.22	1795	3.61
4600	2002	1269	1.09	1310	1.24	1350	1.40	1391	1.58	1474	1.96	1550	2.34	1621	2.69	1689	3.05	1757	3.43	1826	3.82
4800	2089	1321	1.23	1360	1.38	1398	1.55	1437	1.73	1517	2.12	1593	2.52	1662	2.89	1728	3.27	1793	3.64	1858	4.04
5000	2176	1373	1.37	1410	1.53	1447	1.71	1484	1.89	1561	2.29	1635	2.71	1703	3.11	1767	3.49	1830	3.88	1892	4.28
5500	2394	1503	1.79	1537	1.97	1570	2.15	1604	2.34	1672	2.76	1742	3.22	1808	3.67	1870	4.11				
6000	2611	1634	2.29	1665	2.48	1695	2.67	1726	2.88	1788	3.32	1852	3.80								

Power rating (BHP) does not include drive losses. Performance ratings do not include the effects of appurtenances in the airstream. Performance shown is for installation type B-Free inlet, Ducted outlet.



Wheel Diameter = 22.25 in.
 Outlet Area = 2.85 sq. ft. inside
 Maximum BHP = 1.05 x (RPM/1000)³
 Tip Speed, fpm = 5.83 x RPM

Maximum RPM 1717

Size
2225 SISW

Design 7510 Airfoil Vent Sets

Volume O.Vel		1/4"SP		1/2"SP		3/4"SP		1"SP		1-1/2"SP		2"SP		2-1/2"SP		3"SP		3-1/2"SP		4"SP	
CFM	FPM	RPM	BHP	RPM	BHP	RPM	BHP	RPM	BHP	RPM	BHP	RPM	BHP	RPM	BHP	RPM	BHP	RPM	BHP	RPM	BHP
1500	527	420	0.08	526	0.15																
1600	563	433	0.09	537	0.16	626	0.24														
1700	598	447	0.10	548	0.17	632	0.25														
1800	633	461	0.11	558	0.18	641	0.27														
1900	668	476	0.12	569	0.19	651	0.28	726	0.38												
2000	703	491	0.13	580	0.21	662	0.30	733	0.39												
2100	738	507	0.14	592	0.22	672	0.32	742	0.41												
2200	774	522	0.15	604	0.24	683	0.33	752	0.43												
2400	844	553	0.18	631	0.27	705	0.37	774	0.48	894	0.71										
2600	914	585	0.20	660	0.31	728	0.41	795	0.53	911	0.77	1021	1.03								
2800	985	618	0.24	690	0.35	754	0.46	817	0.58	933	0.83	1034	1.10								
3000	1055	651	0.27	721	0.40	782	0.51	840	0.64	954	0.90	1052	1.18	1146	1.48						
3200	1125	686	0.32	752	0.45	811	0.57	866	0.70	975	0.98	1073	1.27	1161	1.57	1251	1.90				
3400	1196	720	0.36	783	0.50	841	0.64	894	0.77	997	1.05	1095	1.36	1180	1.67	1263	2.01				
3600	1266	756	0.41	815	0.55	872	0.70	922	0.84	1020	1.14	1116	1.46	1202	1.79	1280	2.12	1359	2.48		
3800	1336	792	0.47	847	0.62	902	0.78	952	0.93	1045	1.23	1137	1.56	1223	1.90	1300	2.25	1374	2.61	1449	2.99
4000	1407	828	0.54	880	0.68	933	0.85	982	1.01	1071	1.32	1159	1.66	1244	2.02	1322	2.38	1394	2.75	1463	3.14
4500	1582	919	0.72	965	0.88	1012	1.06	1059	1.25	1143	1.61	1220	1.96	1298	2.34	1375	2.74	1447	3.15	1513	3.56
5000	1758	1012	0.95	1053	1.12	1095	1.31	1137	1.51	1218	1.93	1290	2.31	1360	2.71	1430	3.13	1500	3.57	1566	4.03
5500	1934	1105	1.23	1142	1.41	1180	1.61	1218	1.82	1295	2.28	1365	2.73	1429	3.15	1492	3.58	1556	4.04	1620	4.52
6000	2110	1199	1.56	1233	1.76	1267	1.96	1302	2.19	1373	2.68	1441	3.17	1502	3.64	1561	4.11	1619	4.58	1677	5.07
6500	2286	1293	1.95	1325	2.16	1356	2.38	1388	2.61	1453	3.12	1518	3.66	1578	4.19	1634	4.70	1689	5.20		
7000	2462	1388	2.40	1417	2.62	1446	2.85	1476	3.10	1535	3.62	1596	4.20	1655	4.78	1710	5.34				
7500	2637	1483	2.91	1510	3.15	1537	3.40	1565	3.65	1620	4.19	1676	4.79								
8000	2813	1578	3.50	1604	3.75	1629	4.01	1655	4.28	1706	4.84										

Power rating (BHP) does not include drive losses. Performance ratings do not include the effects of appurtenances in the airstream. Performance shown is for installation type B-Free inlet, Ducted outlet.

Wheel Diameter = 24.50 in.
 Outlet Area = 3.45 sq. ft. inside
 Maximum BHP = 1.57 x (RPM/1000)³
 Tip Speed, fpm = 6.41 x RPM

Maximum RPM 1559

Size
2450 SISW

Design 7510 Airfoil Vent Sets

Volume O.Vel		1/4"SP		1/2"SP		3/4"SP		1"SP		1-1/2"SP		2"SP		2-1/2"SP		3"SP		3-1/2"SP		4"SP	
CFM	FPM	RPM	BHP	RPM	BHP	RPM	BHP	RPM	BHP	RPM	BHP	RPM	BHP	RPM	BHP	RPM	BHP	RPM	BHP	RPM	BHP
1600	464	372	0.08	467	0.15																
1800	522	390	0.09	485	0.17																
2000	580	410	0.11	503	0.20	574	0.28														
2200	638	432	0.13	520	0.22	593	0.32														
2400	696	455	0.15	538	0.24	612	0.35	671	0.45												
2600	754	478	0.17	556	0.27	629	0.38	691	0.50												
2800	812	503	0.19	577	0.30	647	0.42	709	0.55	810	0.79										
3000	870	527	0.22	598	0.34	664	0.46	726	0.59	827	0.85										
3200	928	553	0.25	621	0.37	683	0.50	743	0.64	847	0.92	933	1.20								
3400	986	578	0.29	644	0.42	703	0.54	761	0.69	866	0.99	949	1.28								
3600	1044	605	0.32	667	0.46	724	0.59	780	0.74	882	1.06	968	1.38	1044	1.69						
3800	1102	631	0.36	691	0.51	746	0.65	799	0.80	900	1.13	988	1.47	1061	1.79						
4000	1160	658	0.41	715	0.56	769	0.71	820	0.86	918	1.20	1005	1.56	1080	1.91	1148	2.25				
4500	1305	725	0.53	778	0.70	828	0.88	874	1.05	963	1.40	1048	1.79	1126	2.20	1194	2.59	1255	2.97	1316	3.37
5000	1450	794	0.68	843	0.88	889	1.07	932	1.26	1014	1.63	1093	2.04	1169	2.49	1239	2.93	1303	3.38	1359	3.80
5500	1595	863	0.87	909	1.08	952	1.29	992	1.50	1069	1.91	1142	2.33	1214	2.80	1282	3.28	1346	3.77	1406	4.27
6000	1740	933	1.08	976	1.31	1016	1.54	1054	1.77	1127	2.23	1195	2.68	1261	3.14	1327	3.66	1390	4.19	1449	4.71
6500	1885	1004	1.33	1044	1.58	1082	1.83	1118	2.08	1186	2.57	1251	3.06	1313	3.55	1374	4.07	1434	4.62	1494	5.20
7000	2030	1075	1.62	1112	1.89	1148	2.16	1182	2.42	1247	2.96	1309	3.49	1368	4.01	1425	4.54	1481	5.10	1538	5.70
7500	2175	1146	1.95	1182	2.24	1216	2.52	1248	2.81	1310	3.38	1368	3.95	1425	4.52	1479	5.07	1532	5.65		
8000	2320	1217	2.32	1251	2.63	1284	2.94	1315	3.24	1374	3.85	1429	4.46	1483	5.07	1536	5.66				
8500	2465	1289	2.74	1321	3.07	1352	3.40	1382	3.72	1438	4.37	1492	5.02	1543	5.66						
9000	2610	1361	3.21	1392	3.56	1421	3.91	1450	4.25	1504	4.94	1555	5.62								
9500	2755	1434	3.74	1463	4.11	1491	4.47	1518	4.83												
10000	2900	1506	4.32	1534	4.70																

Power rating (BHP) does not include drive losses. Performance ratings do not include the effects of appurtenances in the airstream. Performance shown is for installation type B-Free inlet, Ducted outlet.



Size

2700 SISW

Design 7510 Airfoil Vent Sets

Wheel Diameter = 27.00 in.
 Outlet Area = 4.19 sq. ft. inside
 Maximum BHP = 2.55 x (RPM/1000)³
 Tip Speed, fpm = 7.07 x RPM

Maximum RPM 1415

Volume O.Vel		1/4"SP		1/2"SP		3/4"SP		1"SP		1-1/2"SP		2"SP		2-1/2"SP		3"SP		3-1/2"SP		4"SP	
CFM	FPM	RPM	BHP	RPM	BHP	RPM	BHP	RPM	BHP	RPM	BHP	RPM	BHP	RPM	BHP	RPM	BHP	RPM	BHP	RPM	BHP
2200	525	355	0.11	441	0.21																
2400	573	370	0.13	455	0.23	520	0.34														
2600	621	386	0.15	467	0.26	533	0.37														
2800	669	403	0.17	481	0.28	547	0.41	602	0.53												
3000	716	420	0.19	494	0.31	560	0.44	615	0.57												
3200	764	438	0.21	508	0.33	573	0.47	630	0.62												
3400	812	456	0.24	523	0.36	587	0.51	643	0.66	735	0.96										
3600	860	474	0.26	539	0.40	600	0.55	656	0.71	748	1.02										
3800	907	493	0.29	556	0.44	614	0.59	669	0.76	762	1.09	842	1.43								
4000	955	513	0.32	573	0.48	628	0.63	682	0.80	776	1.16	853	1.50								
4500	1075	561	0.42	617	0.59	668	0.76	716	0.94	809	1.33	888	1.73	955	2.11						
5000	1194	611	0.53	662	0.72	710	0.91	755	1.09	842	1.51	921	1.96	991	2.40	1050	2.82				
5500	1313	662	0.66	710	0.87	754	1.08	796	1.28	876	1.71	954	2.20	1024	2.69	1087	3.17	1141	3.63	1196	4.12
6000	1433	713	0.81	758	1.04	800	1.27	839	1.49	914	1.95	987	2.45	1056	2.98	1119	3.51	1178	4.05	1228	4.55
6500	1552	765	0.98	807	1.23	846	1.48	884	1.73	955	2.22	1023	2.72	1089	3.29	1152	3.86	1210	4.44	1264	5.02
7000	1672	817	1.18	857	1.45	894	1.72	930	1.99	997	2.52	1061	3.04	1123	3.61	1185	4.22	1243	4.85	1296	5.47
7500	1791	869	1.41	907	1.70	943	1.99	977	2.28	1041	2.85	1102	3.41	1160	3.98	1219	4.61	1275	5.27	1329	5.93
8000	1911	922	1.67	958	1.98	992	2.29	1025	2.59	1086	3.20	1144	3.80	1200	4.40	1254	5.03	1309	5.71	1362	6.42
8500	2030	975	1.97	1009	2.29	1042	2.62	1073	2.94	1132	3.59	1187	4.23	1241	4.87	1293	5.51	1344	6.19	1395	6.92
9000	2149	1028	2.29	1061	2.64	1092	2.98	1122	3.32	1178	4.01	1232	4.70	1284	5.37	1334	6.04	1382	6.73		
9500	2269	1081	2.65	1113	3.02	1143	3.38	1171	3.74	1226	4.47	1277	5.20	1327	5.91	1375	6.62				
10000	2388	1135	3.05	1165	3.44	1194	3.82	1221	4.20	1274	4.96	1323	5.73	1371	6.49						
10500	2508	1189	3.49	1218	3.89	1245	4.30	1272	4.70	1322	5.50	1370	6.30								
11000	2627	1243	3.97	1270	4.40	1297	4.82	1323	5.24	1371	6.08										
11500	2746	1297	4.50	1323	4.94	1349	5.39	1374	5.82												

Power rating (BHP) does not include drive losses. Performance ratings do not include the effects of appurtenances in the airstream. Performance shown is for installation type B-Free inlet, Ducted outlet.

Size

3000 SISW

Design 7510 Airfoil Vent Sets

Wheel Diameter = 30.00 in.
 Outlet Area = 5.17 sq. ft. inside
 Maximum BHP = 4.33 x (RPM/1000)³
 Tip Speed, fpm = 7.85 x RPM

Maximum RPM 1273

Volume O.Vel		1/4"SP		1/2"SP		3/4"SP		1"SP		1-1/2"SP		2"SP		2-1/2"SP		3"SP		3-1/2"SP		4"SP	
CFM	FPM	RPM	BHP	RPM	BHP	RPM	BHP	RPM	BHP	RPM	BHP	RPM	BHP	RPM	BHP	RPM	BHP	RPM	BHP	RPM	BHP
2500	484	309	0.13	385	0.24																
3000	580	335	0.16	411	0.29	469	0.42														
3500	677	365	0.21	435	0.35	495	0.51	543	0.66												
4000	774	397	0.27	460	0.42	518	0.59	569	0.77												
4500	870	431	0.33	489	0.50	543	0.69	593	0.89	676	1.28										
5000	967	466	0.41	519	0.60	569	0.79	617	1.01	702	1.46	770	1.88								
5500	1064	501	0.50	551	0.71	598	0.92	642	1.14	725	1.62	796	2.11	857	2.58						
6000	1161	537	0.61	584	0.84	628	1.06	669	1.29	749	1.81	821	2.34	882	2.86	937	3.38				
6500	1257	574	0.73	619	0.98	660	1.23	699	1.47	774	2.00	844	2.57	908	3.15	962	3.71	1013	4.27		
7000	1354	611	0.87	653	1.14	692	1.41	730	1.67	800	2.21	868	2.81	931	3.43	988	4.06	1038	4.66	1085	5.25
7500	1451	648	1.03	689	1.31	726	1.60	761	1.89	828	2.45	893	3.07	955	3.73	1012	4.40	1064	5.07	1110	5.71
8000	1548	686	1.20	724	1.51	760	1.82	794	2.12	858	2.72	919	3.35	979	4.04	1036	4.75	1088	5.46	1137	6.18
8500	1644	724	1.40	761	1.73	795	2.05	827	2.38	889	3.02	947	3.66	1004	4.36	1060	5.11	1111	5.86	1160	6.62
9000	1741	762	1.62	797	1.97	830	2.31	861	2.66	920	3.34	976	4.01	1030	4.72	1084	5.49	1135	6.28	1183	7.07
9500	1838	801	1.87	834	2.23	866	2.59	896	2.96	953	3.68	1007	4.39	1058	5.11	1109	5.88	1160	6.72	1207	7.55
10000	1934	839	2.14	872	2.52	902	2.90	931	3.28	985	4.05	1037	4.80	1087	5.55	1136	6.32	1184	7.17	1232	8.04
10500	2031	878	2.43	909	2.83	938	3.24	966	3.63	1019	4.44	1069	5.23	1117	6.01	1164	6.81	1210	7.65	1256	8.55
11000	2128	917	2.75	947	3.18	975	3.60	1002	4.02	1053	4.86	1102	5.70	1148	6.51	1194	7.34	1237	8.18		
11500	2225	956	3.10	984	3.55	1012	3.99	1038	4.42	1087	5.30	1134	6.18	1180	7.05	1224	7.90	1266	8.76		
12000	2321	995	3.48	1022	3.95	1049	4.41	1074	4.87	1122	5.78	1168	6.70	1212	7.60	1254	8.50				
12500	2418	1034	3.90	1060	4.38	1086	4.86	1110	5.34	1157	6.29	1202	7.24	1244	8.19						
13000	2515	1073	4.34	1099	4.84	1123	5.34	1147	5.84	1193	6.83	1236	7.82								
13500	2611	1112	4.82	1137	5.34	1161	5.86	1184	6.38	1228	7.41	1270	8.43								
14000	2708	1151	5.34	1176	5.88	1199	6.42	1222	6.96	1264	8.01										
14500	2805	1191	5.89	1215	6.45	1237	7.01	1259	7.56												

Power rating (BHP) does not include drive losses. Performance ratings do not include the effects of appurtenances in the airstream. Performance shown is for installation type B-Free inlet, Ducted outlet.



Wheel Diameter = 33.00 in.
 Outlet Area = 6.26 sq. ft. inside
 Maximum BHP = 7.46 x (RPM/1000)³
 Tip Speed, fpm = 8.64 x RPM

Maximum RPM 1103

Size
3300 SISW

Design 7510 Airfoil Vent Sets

Volume O.Vel		1/4"SP		1/2"SP		3/4"SP		1"SP		1-1/2"SP		2"SP		2-1/2"SP		3"SP		3-1/2"SP		4"SP	
CFM	FPM	RPM	BHP	RPM	BHP	RPM	BHP	RPM	BHP	RPM	BHP	RPM	BHP	RPM	BHP	RPM	BHP	RPM	BHP	RPM	BHP
3500	559	292	0.19	359	0.33																
4000	639	315	0.23	377	0.39	431	0.57														
4500	719	339	0.28	395	0.46	447	0.65	494	0.85												
5000	799	363	0.34	415	0.53	465	0.73	510	0.95												
5500	879	388	0.41	438	0.62	483	0.83	527	1.06	604	1.55										
6000	959	413	0.49	461	0.72	503	0.95	545	1.19	620	1.70	688	2.26								
6500	1038	439	0.58	485	0.83	525	1.07	564	1.33	637	1.87	702	2.45								
7000	1118	465	0.68	510	0.95	548	1.21	584	1.48	654	2.05	718	2.65	776	3.29						
7500	1198	491	0.79	535	1.09	572	1.37	606	1.65	673	2.25	735	2.88	792	3.54	846	4.23				
8000	1278	518	0.91	560	1.23	596	1.54	629	1.84	692	2.46	752	3.11	809	3.80	860	4.51	911	5.27		
8500	1358	545	1.05	585	1.39	621	1.72	653	2.04	712	2.68	770	3.37	826	4.08	876	4.82	925	5.59	972	6.40
9000	1438	573	1.21	610	1.56	646	1.92	677	2.26	734	2.93	789	3.64	843	4.38	893	5.15	940	5.94	986	6.77
9500	1518	600	1.38	636	1.75	670	2.13	701	2.50	756	3.20	809	3.94	861	4.70	911	5.50	957	6.31	1001	7.16
10000	1598	628	1.57	662	1.95	695	2.35	726	2.75	780	3.49	830	4.25	880	5.04	928	5.86	974	6.71	1018	7.58
10500	1678	656	1.78	689	2.18	721	2.59	751	3.01	803	3.80	852	4.59	899	5.40	946	6.25	992	7.12	1035	8.02
11000	1757	684	2.01	716	2.42	746	2.85	776	3.29	828	4.14	875	4.95	920	5.79	965	6.66	1009	7.56	1052	8.49
11500	1837	712	2.25	743	2.68	772	3.13	800	3.59	852	4.49	898	5.34	942	6.20	985	7.10	1028	8.03	1069	8.97
12000	1917	741	2.52	770	2.97	798	3.43	826	3.91	876	4.85	921	5.75	964	6.64	1006	7.56	1047	8.51	1087	9.48
12500	1997	769	2.81	797	3.27	825	3.75	851	4.24	901	5.25	946	6.19	987	7.10	1027	8.05	1067	9.02		
13000	2077	797	3.13	825	3.60	851	4.10	877	4.61	926	5.64	970	6.64	1010	7.60	1049	8.56	1087	9.57		
13500	2157	826	3.46	852	3.95	878	4.46	903	4.99	951	6.07	994	7.12	1034	8.11	1072	9.11				
14000	2237	855	3.83	880	4.33	905	4.86	929	5.40	976	6.51	1019	7.61	1058	8.67	1095	9.69				
15000	2397	912	4.63	936	5.16	959	5.72	982	6.29	1026	7.47	1068	8.67								
16000	2556	970	5.54	992	6.10	1014	6.69	1036	7.30	1078	8.55										
17000	2716	1028	6.58	1049	7.17	1070	7.78	1090	8.42												

Power rating (BHP) does not include drive losses. Performance ratings do not include the effects of appurtenances in the airstream. Performance shown is for installation type B-Free inlet, Ducted outlet.

Wheel Diameter = 36.50 in.
 Outlet Area = 7.65 sq. ft. inside
 Maximum BHP = 12.4 x (RPM/1000)³
 Tip Speed, fpm = 9.56 x RPM

Maximum RPM 1046

Size
3650 SISW

Design 7510 Airfoil Vent Sets

Volume O.Vel		1/4"SP		1/2"SP		3/4"SP		1"SP		1-1/2"SP		2"SP		2-1/2"SP		3"SP		3-1/2"SP		4"SP	
CFM	FPM	RPM	BHP	RPM	BHP	RPM	BHP	RPM	BHP	RPM	BHP	RPM	BHP	RPM	BHP	RPM	BHP	RPM	BHP	RPM	BHP
4500	588	271	0.24	330	0.43																
5000	653	288	0.29	343	0.49	392	0.71														
5500	718	306	0.35	357	0.56	404	0.79	446	1.04												
6000	784	324	0.41	372	0.63	417	0.88	458	1.14												
6500	849	342	0.47	388	0.72	431	0.97	471	1.25												
7000	914	361	0.54	405	0.81	445	1.08	483	1.37	552	1.98										
7500	979	379	0.62	423	0.91	460	1.20	497	1.50	565	2.14										
8000	1045	398	0.71	441	1.03	476	1.33	511	1.64	577	2.30	636	3.01	701	4.00						
8500	1110	418	0.81	459	1.15	493	1.47	526	1.79	590	2.48	648	3.22	712	4.23						
9000	1175	437	0.92	477	1.28	511	1.62	542	1.96	603	2.67	660	3.44								
9500	1241	457	1.04	495	1.42	529	1.79	559	2.14	617	2.88	673	3.67	724	4.49	771	5.36				
10000	1306	477	1.17	514	1.57	547	1.96	576	2.33	632	3.10	686	3.92	736	4.77	783	5.65				
10500	1371	497	1.32	532	1.73	565	2.15	594	2.54	647	3.33	699	4.17	749	5.05	795	5.96	838	6.91		
11000	1437	517	1.48	551	1.90	583	2.34	612	2.76	663	3.58	713	4.45	762	5.35	808	6.29	850	7.26	891	8.27
12000	1567	558	1.83	590	2.29	620	2.77	648	3.24	697	4.13	743	5.05	789	6.01	833	7.00	875	8.03	914	9.06
13000	1698	599	2.24	629	2.74	657	3.25	684	3.77	732	4.75	775	5.72	818	6.73	860	7.78	900	8.85	940	9.95
14000	1828	641	2.72	669	3.24	695	3.79	721	4.35	768	5.44	809	6.47	849	7.53	888	8.62	927	9.76	965	10.90
15000	2024	704	3.57	729	4.13	754	4.73	777	5.34	822	6.58	862	7.75	899	8.89	935	10.06	971	11.26	1006	12.49
16000	2090	725	3.89	749	4.47	773	5.08	796	5.71	841	6.98	880	8.21	917	9.39	951	10.58	986	11.81	1020	13.07
17000	2220	767	4.59	790	5.20	813	5.84	835	6.50	877	7.85	916	9.19	952	10.46	985	11.70	1018	12.97		
18000	2351	810	5.37	832	6.01	853	6.68	874	7.38	915	8.80	953	10.23	988	11.60	1020	12.92				
19000	2481	853	6.24	873	6.91	893	7.61	913	8.33	952	9.82	990	11.35	1024	12.82						
20000	2612	895	7.21	915	7.90	934	8.63	953	9.39	991	10.94	1026	12.53								
21000	2743	938	8.27	957	9.00	975	9.76	994	10.54	1029	12.15										
22000	2873	981	9.43	999	10.19	1016	10.98	1034	11.79												

Power rating (BHP) does not include drive losses. Performance ratings do not include the effects of appurtenances in the airstream. Performance shown is for installation type B-Free inlet, Ducted outlet.



Wheel Diameter = 12.25 in.
 Outlet Area = 0.86 sq. ft. inside
 Maximum BHP = .067 x (RPM/1000)³
 Tip Speed, fpm = 3.21 x RPM

Size

1225 SISW

Maximum RPM 2806

Design 7520 BI Vent Sets

Volume O.Vel		1/4"SP		1/2"SP		3/4"SP		1"SP		1-1/2"SP		2"SP		2-1/2"SP		3"SP		3-1/2"SP		4"SP	
CFM	FPM	RPM	BHP	RPM	BHP	RPM	BHP	RPM	BHP	RPM	BHP	RPM	BHP	RPM	BHP	RPM	BHP	RPM	BHP	RPM	BHP
300	348	640	0.02																		
400	464	691	0.02	896	0.04																
500	580	762	0.03	940	0.05	1100	0.08														
600	696	846	0.04	999	0.07	1144	0.09	1279	0.13												
700	812	932	0.05	1072	0.08	1201	0.11	1325	0.15	1554	0.22										
800	928	1020	0.07	1155	0.10	1269	0.14	1381	0.17	1594	0.25	1792	0.34								
900	1044	1113	0.09	1240	0.13	1347	0.16	1448	0.20	1645	0.28	1829	0.37	2004	0.48						
1000	1160	1212	0.12	1326	0.15	1431	0.20	1524	0.24	1704	0.32	1878	0.42	2041	0.52	2199	0.63				
1100	1276	1314	0.15	1413	0.19	1517	0.23	1606	0.28	1771	0.37	1934	0.47	2090	0.57	2238	0.69	2381	0.81		
1200	1392	1419	0.18	1505	0.23	1603	0.27	1691	0.32	1846	0.42	1996	0.53	2144	0.63	2286	0.75	2422	0.87	2554	1.00
1300	1508	1525	0.22	1601	0.27	1689	0.32	1777	0.37	1927	0.48	2066	0.59	2205	0.70	2340	0.82	2471	0.95	2597	1.08
1400	1624	1632	0.27	1700	0.32	1778	0.37	1863	0.43	2011	0.55	2143	0.66	2271	0.78	2399	0.90	2525	1.03	2646	1.17
1500	1740	1740	0.33	1801	0.38	1871	0.43	1949	0.49	2097	0.62	2224	0.74	2344	0.86	2464	0.99	2583	1.12	2700	1.26
1600	1856	1848	0.39	1905	0.44	1968	0.50	2038	0.56	2182	0.69	2307	0.83	2423	0.95	2535	1.09	2647	1.23	2758	1.37
1700	1972	1957	0.46	2010	0.52	2067	0.58	2130	0.64	2268	0.78	2392	0.92	2505	1.06	2611	1.19	2717	1.34		
1800	2088	2066	0.54	2116	0.60	2168	0.66	2226	0.73	2354	0.87	2478	1.02	2589	1.17	2691	1.31	2792	1.46		
1900	2204	2176	0.62	2222	0.69	2271	0.75	2323	0.82	2442	0.97	2563	1.12	2673	1.28	2774	1.43				
2000	2320	2286	0.72	2330	0.79	2375	0.86	2423	0.93	2532	1.08	2650	1.24	2759	1.40						
2100	2436	2396	0.83	2437	0.90	2480	0.97	2525	1.04	2625	1.20	2736	1.36								
2200	2552	2506	0.94	2546	1.02	2586	1.09	2628	1.17	2720	1.33										
2300	2668	2616	1.07	2654	1.15	2693	1.23	2732	1.31												
2400	2784	2726	1.21	2763	1.29	2800	1.37														

Power rating (BHP) does not include drive losses. Performance ratings do not include the effects of appurtenances in the airstream. Performance shown is for installation type B-Free inlet, Ducted outlet.

Wheel Diameter = 13.50 in.
 Outlet Area = 1.05 sq. ft. inside
 Maximum BHP = .118 x (RPM/1000)³
 Tip Speed, fpm = 3.53 x RPM

Size

1350 SISW

Maximum RPM 2546

Design 7520 BI Vent Sets

Volume O.Vel		1/4"SP		1/2"SP		3/4"SP		1"SP		1-1/2"SP		2"SP		2-1/2"SP		3"SP		3-1/2"SP		4"SP	
CFM	FPM	RPM	BHP	RPM	BHP	RPM	BHP	RPM	BHP	RPM	BHP	RPM	BHP	RPM	BHP	RPM	BHP	RPM	BHP	RPM	BHP
400	382	593	0.02																		
500	477	626	0.03	819	0.05																
600	572	669	0.03	848	0.06	1001	0.10														
700	668	724	0.04	882	0.08	1028	0.11	1157	0.15												
800	763	785	0.06	923	0.09	1060	0.13	1185	0.17	1402	0.26										
900	859	849	0.07	973	0.11	1097	0.15	1216	0.19	1428	0.29										
1000	954	917	0.09	1029	0.13	1140	0.17	1251	0.21	1456	0.32	1637	0.43								
1100	1049	987	0.11	1090	0.15	1191	0.20	1291	0.24	1488	0.35	1665	0.47	1827	0.59						
1200	1145	1058	0.13	1153	0.18	1246	0.23	1338	0.27	1523	0.38	1695	0.51	1853	0.64	1999	0.77				
1300	1240	1131	0.16	1219	0.21	1305	0.26	1390	0.31	1561	0.42	1728	0.55	1881	0.69	2025	0.83	2160	0.98	2285	1.13
1400	1335	1204	0.19	1287	0.25	1368	0.30	1447	0.36	1605	0.47	1763	0.60	1914	0.74	2054	0.89	2185	1.04	2310	1.20
1500	1431	1279	0.23	1356	0.29	1432	0.35	1506	0.40	1654	0.52	1802	0.65	1947	0.80	2084	0.95	2215	1.11	2337	1.27
1600	1526	1354	0.27	1427	0.33	1498	0.39	1568	0.46	1707	0.58	1845	0.71	1984	0.86	2118	1.02	2244	1.18	2366	1.35
1700	1622	1430	0.32	1498	0.38	1566	0.45	1632	0.51	1763	0.64	1893	0.78	2023	0.93	2153	1.09	2277	1.26	2395	1.43
1800	1717	1506	0.37	1571	0.44	1635	0.50	1698	0.57	1822	0.71	1945	0.85	2067	1.00	2191	1.17	2312	1.34	2428	1.52
1900	1812	1583	0.43	1644	0.50	1705	0.57	1765	0.64	1883	0.79	2000	0.94	2115	1.09	2232	1.25	2348	1.43	2462	1.62
2000	1908	1660	0.49	1718	0.56	1776	0.64	1833	0.71	1946	0.87	2057	1.02	2167	1.18	2277	1.34	2388	1.52	2499	1.71
2100	2003	1737	0.56	1793	0.63	1848	0.71	1902	0.79	2010	0.96	2116	1.12	2221	1.28	2326	1.45	2431	1.63	2537	1.82
2200	2099	1814	0.63	1868	0.71	1920	0.80	1972	0.88	2076	1.05	2177	1.22	2278	1.39	2378	1.56	2477	1.74		
2300	2194	1892	0.72	1943	0.80	1994	0.89	2044	0.97	2143	1.15	2240	1.33	2336	1.51	2432	1.68	2527	1.86		
2400	2289	1970	0.80	2019	0.89	2067	0.98	2115	1.07	2210	1.26	2304	1.44	2397	1.63	2489	1.81				
2500	2385	2048	0.90	2095	0.99	2141	1.09	2188	1.18	2279	1.37	2369	1.56	2458	1.76						
2600	2480	2126	1.01	2172	1.10	2216	1.20	2261	1.30	2349	1.49	2436	1.69	2522	1.89						
2800	2671	2283	1.24	2325	1.34	2367	1.45	2408	1.55	2490	1.76										
3000	2862	2440	1.51	2480	1.62	2518	1.73														

Power rating (BHP) does not include drive losses. Performance ratings do not include the effects of appurtenances in the airstream. Performance shown is for installation type B-Free inlet, Ducted outlet.



Wheel Diameter = 15.00 in.
 Outlet Area = 1.29 sq. ft. inside
 Maximum BHP = .200 x (RPM/1000)³
 Tip Speed, fpm = 3.93 x RPM

Maximum RPM 2154

Size
1500 SISW

Design 7520 BI Vent Sets

Volume O.Vel		1/4"SP		1/2"SP		3/4"SP		1"SP		1-1/2"SP		2"SP		2-1/2"SP		3"SP		3-1/2"SP		4"SP	
CFM	FPM	RPM	BHP	RPM	BHP	RPM	BHP	RPM	BHP	RPM	BHP	RPM	BHP	RPM	BHP	RPM	BHP	RPM	BHP	RPM	BHP
500	386	534	0.03																		
600	464	559	0.03	734	0.06																
700	541	588	0.04	754	0.07	893	0.11														
800	618	625	0.05	778	0.09	912	0.13	1029	0.17												
900	695	667	0.06	804	0.10	933	0.14	1048	0.19												
1000	773	712	0.07	835	0.11	957	0.16	1068	0.21	1264	0.33										
1100	850	759	0.09	871	0.13	984	0.18	1092	0.23	1283	0.35										
1200	927	808	0.10	912	0.15	1014	0.20	1117	0.26	1303	0.38	1467	0.52								
1300	1004	858	0.12	955	0.17	1049	0.22	1145	0.28	1325	0.41	1486	0.55	1633	0.70						
1400	1082	910	0.15	1000	0.20	1088	0.25	1176	0.31	1350	0.45	1508	0.59	1651	0.75	1784	0.91				
1500	1159	962	0.17	1047	0.23	1129	0.29	1211	0.35	1375	0.48	1530	0.63	1672	0.80	1802	0.96	1924	1.14		
1600	1236	1015	0.20	1095	0.26	1173	0.32	1249	0.38	1404	0.52	1554	0.68	1692	0.84	1821	1.02	1943	1.20	2056	1.39
1700	1314	1069	0.23	1144	0.29	1218	0.36	1290	0.43	1435	0.57	1579	0.73	1715	0.90	1842	1.08	1962	1.27	2074	1.46
1800	1391	1123	0.26	1194	0.33	1264	0.40	1333	0.47	1469	0.61	1606	0.78	1740	0.96	1864	1.14	1981	1.33	2094	1.53
1900	1468	1177	0.30	1245	0.37	1312	0.45	1377	0.52	1506	0.67	1636	0.83	1765	1.01	1888	1.21	2003	1.40	2113	1.61
2000	1545	1232	0.35	1297	0.42	1360	0.50	1423	0.58	1546	0.73	1669	0.89	1792	1.08	1912	1.27	2026	1.48	2134	1.69
2100	1623	1288	0.39	1349	0.47	1410	0.55	1469	0.63	1587	0.80	1704	0.96	1821	1.15	1938	1.35	2050	1.56		
2200	1700	1343	0.44	1402	0.53	1460	0.61	1517	0.69	1630	0.86	1741	1.04	1853	1.22	1965	1.42	2075	1.64		
2400	1854	1455	0.56	1509	0.65	1562	0.74	1615	0.83	1719	1.02	1822	1.20	1923	1.39	2026	1.59	2129	1.81		
2600	2009	1567	0.69	1617	0.79	1667	0.89	1716	0.99	1812	1.19	1908	1.39	2002	1.59	2096	1.79				
2800	2163	1680	0.85	1727	0.95	1773	1.06	1819	1.16	1909	1.38	1998	1.60	2086	1.81						
3000	2318	1794	1.03	1837	1.14	1880	1.25	1923	1.36	2008	1.59	2091	1.82								
3200	2472	1908	1.23	1949	1.35	1989	1.47	2029	1.59	2109	1.83										
3400	2627	2022	1.46	2061	1.59	2099	1.71	2136	1.84												
3600	2782	2137	1.72																		

Power rating (BHP) does not include drive losses. Performance ratings do not include the effects of appurtenances in the airstream. Performance shown is for installation type B-Free inlet, Ducted outlet.

Wheel Diameter = 16.50 in.
 Outlet Area = 1.56 sq. ft. inside
 Maximum BHP = .323 x (RPM/1000)³
 Tip Speed, fpm = 4.32 x RPM

Maximum RPM 2083

Size
1650 SISW

Design 7520 BI Vent Sets

Volume O.Vel		1/4"SP		1/2"SP		3/4"SP		1"SP		1-1/2"SP		2"SP		2-1/2"SP		3"SP		3-1/2"SP		4"SP	
CFM	FPM	RPM	BHP	RPM	BHP	RPM	BHP	RPM	BHP	RPM	BHP	RPM	BHP	RPM	BHP	RPM	BHP	RPM	BHP	RPM	BHP
600	383	485	0.03																		
700	447	503	0.04	664	0.08																
800	511	523	0.04	678	0.09																
900	575	549	0.05	694	0.10	819	0.15														
1000	639	578	0.06	713	0.11	834	0.16	940	0.22												
1100	702	610	0.07	733	0.12	850	0.17	954	0.23												
1200	766	644	0.09	757	0.13	868	0.19	970	0.25	1148	0.39										
1300	830	679	0.10	783	0.15	888	0.21	987	0.28	1161	0.42										
1400	894	715	0.12	813	0.17	910	0.23	1005	0.30	1177	0.45	1327	0.61								
1500	958	753	0.13	844	0.19	934	0.25	1025	0.32	1192	0.48	1341	0.64								
1600	1022	791	0.15	877	0.22	961	0.28	1046	0.35	1210	0.51	1356	0.68	1488	0.86						
1700	1086	829	0.18	911	0.24	991	0.31	1070	0.38	1228	0.54	1371	0.72	1502	0.91	1623	1.11				
1800	1149	869	0.20	946	0.27	1022	0.34	1097	0.41	1247	0.58	1388	0.76	1517	0.96	1637	1.16	1747	1.37		
2000	1277	949	0.26	1019	0.34	1087	0.41	1155	0.49	1291	0.66	1425	0.85	1549	1.06	1666	1.27	1775	1.49	1877	1.73
2200	1405	1030	0.33	1094	0.41	1157	0.50	1219	0.58	1342	0.76	1465	0.95	1586	1.17	1698	1.39	1805	1.63	1906	1.87
2400	1533	1112	0.41	1171	0.50	1229	0.59	1287	0.69	1399	0.87	1512	1.07	1625	1.29	1735	1.53	1838	1.77	1937	2.03
2600	1660	1195	0.50	1250	0.60	1304	0.70	1357	0.80	1462	1.00	1565	1.21	1670	1.43	1774	1.67	1875	1.93	1971	2.19
2800	1788	1279	0.61	1330	0.72	1380	0.82	1430	0.93	1528	1.15	1624	1.36	1720	1.59	1817	1.84	1914	2.10	2007	2.38
3000	1916	1363	0.74	1411	0.85	1458	0.96	1504	1.08	1596	1.31	1687	1.54	1776	1.77	1866	2.02	1956	2.29	2047	2.57
3200	2043	1448	0.88	1493	1.00	1537	1.12	1581	1.24	1667	1.49	1752	1.74	1837	1.98	1920	2.23	2005	2.50		
3400	2171	1533	1.04	1575	1.16	1617	1.29	1658	1.42	1740	1.68	1820	1.94	1900	2.21	1979	2.47	2058	2.74		
3600	2299	1618	1.22	1658	1.35	1697	1.48	1736	1.62	1814	1.89	1890	2.17	1966	2.45	2041	2.73				
3800	2427	1704	1.41	1742	1.55	1779	1.69	1816	1.84	1890	2.13	1962	2.42	2034	2.71						
4000	2554	1790	1.64	1826	1.78	1861	1.93	1896	2.08	1966	2.38	2036	2.69								
4500	2873	2004	2.28	2037	2.45	2068	2.61														

Power rating (BHP) does not include drive losses. Performance ratings do not include the effects of appurtenances in the airstream. Performance shown is for installation type B-Free inlet, Ducted outlet.



Wheel Diameter = 18.25 in.
 Outlet Area = 1.91 sq. ft. inside
 Maximum BHP = .544 x (RPM/1000)³
 Tip Speed, fpm = 4.78 x RPM

Size

1825 SISW

Maximum RPM 1884

Design 7520 BI Vent Sets

Volume O.Vel		1/4"SP		1/2"SP		3/4"SP		1"SP		1-1/2"SP		2"SP		2-1/2"SP		3"SP		3-1/2"SP		4"SP	
CFM	FPM	RPM	BHP	RPM	BHP	RPM	BHP	RPM	BHP	RPM	BHP	RPM	BHP	RPM	BHP	RPM	BHP	RPM	BHP	RPM	BHP
1000	523	471	0.05	605	0.10																
1100	576	490	0.06	618	0.11	729	0.17														
1200	628	510	0.07	632	0.12	739	0.18														
1300	680	532	0.08	648	0.14	751	0.20	844	0.27												
1400	733	555	0.09	664	0.15	764	0.21	855	0.29												
1500	785	580	0.11	682	0.17	779	0.23	867	0.31												
1600	837	605	0.12	701	0.18	795	0.25	880	0.33	1034	0.50										
1700	889	631	0.13	722	0.20	811	0.27	895	0.35	1045	0.52										
1800	942	657	0.15	743	0.22	828	0.30	910	0.38	1057	0.55	1190	0.75								
1900	994	685	0.17	766	0.24	847	0.32	926	0.40	1069	0.58	1199	0.78								
2000	1046	712	0.19	790	0.27	867	0.35	942	0.43	1083	0.61	1210	0.82								
2100	1099	740	0.21	814	0.29	888	0.38	960	0.46	1098	0.65	1222	0.86	1338	1.09						
2200	1151	769	0.23	839	0.32	909	0.41	979	0.50	1113	0.69	1235	0.90	1349	1.13	1456	1.38				
2300	1203	798	0.26	865	0.35	932	0.44	999	0.53	1129	0.73	1249	0.94	1360	1.17	1465	1.43				
2400	1256	827	0.29	891	0.38	956	0.47	1019	0.57	1145	0.77	1264	0.99	1373	1.22	1476	1.48	1574	1.75		
2500	1308	856	0.32	917	0.41	979	0.51	1041	0.61	1163	0.82	1279	1.04	1386	1.27	1487	1.53	1584	1.80		
2600	1360	886	0.35	944	0.45	1004	0.55	1063	0.65	1181	0.87	1295	1.09	1400	1.33	1500	1.59	1595	1.87	1685	2.15
2700	1413	915	0.39	972	0.48	1029	0.59	1086	0.70	1200	0.92	1310	1.14	1415	1.39	1513	1.65	1606	1.93	1695	2.22
2800	1465	945	0.42	999	0.52	1055	0.63	1110	0.74	1219	0.97	1327	1.20	1430	1.45	1527	1.72	1618	2.00	1707	2.29
3000	1570	1005	0.50	1056	0.61	1107	0.72	1159	0.84	1261	1.08	1362	1.33	1462	1.59	1556	1.86	1646	2.14	1730	2.44
3500	1831	1158	0.76	1200	0.88	1244	1.01	1287	1.14	1376	1.41	1464	1.69	1550	1.98	1637	2.27	1720	2.58	1802	2.89
4000	2093	1312	1.09	1349	1.23	1386	1.37	1424	1.51	1501	1.82	1578	2.13	1655	2.45	1731	2.78	1806	3.11	1881	3.45
4500	2355	1468	1.52	1500	1.66	1532	1.82	1566	1.98	1634	2.31	1702	2.66	1771	3.02	1839	3.38				
5000	2616	1624	2.05	1653	2.21	1682	2.37	1711	2.54	1772	2.91	1833	3.28								
5500	2878	1781	2.69	1807	2.86	1833	3.04	1860	3.23												

Power rating (BHP) does not include drive losses. Performance ratings do not include the effects of appurtenances in the airstream. Performance shown is for installation type B-Free inlet, Ducted outlet.

Wheel Diameter = 20.00 in.
 Outlet Area = 2.29 sq. ft. inside
 Maximum BHP = .860 x (RPM/1000)³
 Tip Speed, fpm = 5.24 x RPM

Size

2000 SISW

Maximum RPM 1719

Design 7520 BI Vent Sets

Volume O.Vel		1/4"SP		1/2"SP		3/4"SP		1"SP		1-1/2"SP		2"SP		2-1/2"SP		3"SP		3-1/2"SP		4"SP	
CFM	FPM	RPM	BHP	RPM	BHP	RPM	BHP	RPM	BHP	RPM	BHP	RPM	BHP	RPM	BHP	RPM	BHP	RPM	BHP	RPM	BHP
1200	523	430	0.06	552	0.12																
1300	566	444	0.07	562	0.13																
1400	610	459	0.08	573	0.14	671	0.22														
1500	654	475	0.09	584	0.16	679	0.23														
1600	697	492	0.10	596	0.17	689	0.25	773	0.33												
1700	741	510	0.11	608	0.18	699	0.26	781	0.35												
1800	784	529	0.13	622	0.20	711	0.28	791	0.37												
1900	828	548	0.14	636	0.22	722	0.30	801	0.39	942	0.59										
2000	871	567	0.15	652	0.24	735	0.32	812	0.41	949	0.62										
2200	958	608	0.19	685	0.28	761	0.37	835	0.46	968	0.67	1088	0.91								
2400	1046	650	0.23	720	0.32	790	0.42	860	0.52	988	0.74	1104	0.98								
2600	1133	693	0.27	758	0.37	823	0.48	887	0.58	1011	0.81	1123	1.06	1227	1.34						
2800	1220	736	0.32	796	0.43	857	0.54	917	0.65	1035	0.89	1144	1.15	1245	1.43	1340	1.73				
3000	1307	781	0.38	837	0.49	893	0.61	949	0.73	1060	0.98	1167	1.24	1265	1.53	1357	1.84	1445	2.17		
3200	1394	826	0.45	878	0.56	931	0.69	984	0.82	1088	1.08	1190	1.35	1287	1.64	1377	1.96	1461	2.29	1544	2.64
3400	1481	871	0.52	920	0.64	970	0.77	1020	0.91	1118	1.18	1216	1.47	1309	1.77	1397	2.08	1481	2.42	1560	2.78
3600	1568	917	0.60	963	0.73	1009	0.87	1057	1.01	1150	1.30	1243	1.60	1333	1.90	1420	2.23	1502	2.57	1579	2.93
3800	1656	963	0.70	1006	0.83	1050	0.97	1095	1.12	1184	1.42	1272	1.73	1359	2.05	1443	2.38	1523	2.73	1599	3.10
4000	1743	1009	0.80	1050	0.94	1092	1.08	1134	1.24	1219	1.55	1303	1.88	1386	2.21	1468	2.55	1546	2.90	1621	3.27
4500	1961	1126	1.10	1162	1.25	1198	1.41	1236	1.58	1311	1.93	1386	2.28	1460	2.65	1534	3.02	1607	3.40	1679	3.78
5000	2178	1244	1.47	1275	1.63	1308	1.80	1341	1.99	1409	2.37	1476	2.76	1544	3.16	1610	3.56	1677	3.97		
5500	2396	1362	1.92	1391	2.09	1420	2.28	1450	2.48	1511	2.88	1572	3.31	1633	3.74	1694	4.18				
6000	2614	1481	2.45	1507	2.64	1533	2.84	1561	3.05	1616	3.48	1671	3.93								
6500	2832	1600	3.08	1624	3.29	1648	3.50	1673	3.72												

Power rating (BHP) does not include drive losses. Performance ratings do not include the effects of appurtenances in the airstream. Performance shown is for installation type B-Free inlet, Ducted outlet.



Wheel Diameter = 22.25 in.
 Outlet Area = 2.85 sq. ft. inside
 Maximum BHP = 1.47 x (RPM/1000)³
 Tip Speed, fpm = 5.83 x RPM

Maximum RPM 1545

Size
2225 SISW

Design 7520 BI Vent Sets

Volume O.Vel		1/4"SP		1/2"SP		3/4"SP		1"SP		1-1/2"SP		2"SP		2-1/2"SP		3"SP		3-1/2"SP		4"SP	
CFM	FPM	RPM	BHP	RPM	BHP	RPM	BHP	RPM	BHP	RPM	BHP	RPM	BHP	RPM	BHP	RPM	BHP	RPM	BHP	RPM	BHP
1500	528	388	0.08	497	0.15																
1600	563	398	0.09	505	0.16																
1700	598	409	0.10	512	0.17	601	0.26														
1800	634	420	0.11	520	0.19	607	0.28														
1900	669	432	0.12	528	0.20	614	0.29	691	0.40												
2000	704	445	0.13	537	0.21	621	0.31	696	0.41												
2200	774	471	0.15	556	0.24	636	0.34	709	0.45												
2400	845	499	0.18	577	0.28	654	0.38	724	0.49	849	0.75										
2600	915	528	0.21	601	0.32	672	0.42	740	0.54	861	0.80										
2800	986	558	0.25	625	0.36	692	0.47	757	0.59	876	0.86	982	1.16								
3000	1056	589	0.29	651	0.40	714	0.53	776	0.65	891	0.92	994	1.23	1091	1.56						
3200	1126	620	0.33	679	0.46	737	0.58	795	0.72	907	0.99	1008	1.31	1102	1.64						
3400	1197	651	0.38	707	0.51	762	0.65	817	0.78	924	1.07	1023	1.39	1114	1.74	1201	2.11				
3600	1267	683	0.44	735	0.57	788	0.72	840	0.86	942	1.16	1039	1.48	1129	1.84	1213	2.21	1292	2.61		
3800	1338	716	0.50	765	0.64	815	0.79	864	0.94	962	1.25	1056	1.58	1144	1.94	1226	2.32	1304	2.73	1379	3.16
4000	1408	749	0.57	795	0.71	842	0.87	889	1.03	982	1.35	1074	1.69	1160	2.06	1240	2.44	1316	2.86	1390	3.29
4500	1584	831	0.77	872	0.93	914	1.10	956	1.27	1039	1.63	1122	2.00	1203	2.39	1280	2.79	1353	3.21	1422	3.66
5000	1760	915	1.01	952	1.19	989	1.37	1026	1.56	1102	1.96	1176	2.36	1250	2.77	1323	3.20	1394	3.64	1461	4.10
5500	1936	1000	1.31	1033	1.50	1066	1.69	1100	1.90	1169	2.33	1237	2.77	1305	3.21	1372	3.67	1438	4.13	1503	4.61
6000	2112	1086	1.67	1115	1.86	1146	2.08	1176	2.29	1239	2.75	1302	3.23	1364	3.70	1426	4.19	1487	4.69		
6500	2288	1171	2.08	1198	2.29	1226	2.52	1254	2.75	1312	3.24	1370	3.74	1428	4.26	1485	4.78	1542	5.31		
7000	2464	1258	2.57	1283	2.79	1308	3.03	1334	3.27	1387	3.79	1440	4.32	1494	4.87						
7500	2640	1344	3.12	1367	3.36	1391	3.61	1415	3.87	1464	4.41	1513	4.97								
8000	2816	1430	3.75	1452	4.01	1474	4.27	1497	4.54	1542	5.11										
8500	2992	1517	4.47	1538	4.74																

Power rating (BHP) does not include drive losses. Performance ratings do not include the effects of appurtenances in the airstream. Performance shown is for installation type B-Free inlet, Ducted outlet.

Wheel Diameter = 24.50 in.
 Outlet Area = 3.45 sq. ft. inside
 Maximum BHP = 2.22 x (RPM/1000)³
 Tip Speed, fpm = 6.41 x RPM

Maximum RPM 1403

Size
2450 SISW

Design 7520 BI Vent Sets

Volume O.Vel		1/4"SP		1/2"SP		3/4"SP		1"SP		1-1/2"SP		2"SP		2-1/2"SP		3"SP		3-1/2"SP		4"SP	
CFM	FPM	RPM	BHP	RPM	BHP	RPM	BHP	RPM	BHP	RPM	BHP	RPM	BHP	RPM	BHP	RPM	BHP	RPM	BHP	RPM	BHP
1600	464	342	0.08																		
1800	522	358	0.10	452	0.18																
2000	580	375	0.11	464	0.20																
2200	638	392	0.13	479	0.22	553	0.33														
2400	696	411	0.15	495	0.25	565	0.36	631	0.48												
2600	754	432	0.18	511	0.28	579	0.39	642	0.52												
2800	812	455	0.21	528	0.31	594	0.43	654	0.56												
3000	870	478	0.24	545	0.35	611	0.47	669	0.61	776	0.89										
3200	928	502	0.27	562	0.39	627	0.52	684	0.66	787	0.95										
3400	986	526	0.31	582	0.44	644	0.57	700	0.71	799	1.02	893	1.35								
3600	1044	550	0.35	603	0.48	661	0.62	716	0.77	813	1.09	903	1.43								
3800	1102	575	0.40	625	0.54	678	0.68	733	0.83	828	1.16	915	1.51	998	1.88						
4000	1160	600	0.45	648	0.59	696	0.74	750	0.90	843	1.24	928	1.60	1008	1.98						
4500	1305	663	0.59	706	0.75	748	0.92	792	1.10	885	1.45	965	1.84	1039	2.25	1110	2.67	1180	3.12		
5000	1450	728	0.77	767	0.95	805	1.13	842	1.32	927	1.71	1005	2.12	1076	2.55	1143	3.01	1207	3.47	1271	3.95
5500	1595	793	0.99	828	1.18	863	1.38	898	1.58	969	2.00	1047	2.44	1115	2.89	1180	3.37	1241	3.87	1301	4.38
6000	1740	859	1.24	892	1.45	924	1.66	955	1.88	1018	2.34	1088	2.80	1157	3.28	1219	3.78	1279	4.30	1335	4.84
6500	1885	925	1.54	955	1.76	985	1.99	1015	2.23	1072	2.71	1133	3.21	1199	3.71	1261	4.24	1318	4.78	1373	5.34
7000	2030	992	1.88	1020	2.13	1048	2.37	1075	2.62	1129	3.13	1183	3.66	1242	4.20	1303	4.75	1360	5.31		
7500	2175	1059	2.28	1085	2.54	1111	2.80	1137	3.06	1187	3.61	1237	4.17	1288	4.74	1345	5.31	1402	5.90		
8000	2320	1126	2.73	1151	3.00	1175	3.28	1199	3.56	1247	4.14	1294	4.72	1340	5.33	1390	5.94				
8500	2465	1193	3.24	1217	3.53	1240	3.82	1262	4.12	1307	4.72	1352	5.34	1396	5.97						
9000	2610	1260	3.81	1283	4.11	1305	4.42	1326	4.73	1369	5.37										
9500	2755	1328	4.44	1349	4.76	1370	5.09	1391	5.42												
10000	2900	1396	5.14																		

Power rating (BHP) does not include drive losses. Performance ratings do not include the effects of appurtenances in the airstream. Performance shown is for installation type B-Free inlet, Ducted outlet.



Size

2700 SISW

Design 7520 BI Vent Sets

Wheel Diameter = 27.00 in.
 Outlet Area = 4.19 sq. ft. inside
 Maximum BHP = 3.61 x (RPM/1000)³
 Tip Speed, fpm = 7.07 x RPM

Maximum RPM 1273

Volume O.Vel		1/4"SP		1/2"SP		3/4"SP		1"SP		1-1/2"SP		2"SP		2-1/2"SP		3"SP		3-1/2"SP		4"SP	
CFM	FPM	RPM	BHP	RPM	BHP	RPM	BHP	RPM	BHP	RPM	BHP	RPM	BHP	RPM	BHP	RPM	BHP	RPM	BHP	RPM	BHP
2000	478	314	0.10																		
2200	525	326	0.12	410	0.22																
2400	573	339	0.13	420	0.24																
2600	621	351	0.15	431	0.26	499	0.39														
2800	669	364	0.17	442	0.29	507	0.42														
3000	716	379	0.20	454	0.32	517	0.45	576	0.59												
3200	764	396	0.22	466	0.35	528	0.49	584	0.64												
3500	836	421	0.26	485	0.40	545	0.55	599	0.70												
4000	955	465	0.35	518	0.50	576	0.66	627	0.83	719	1.19										
4500	1075	511	0.45	557	0.62	608	0.79	658	0.97	745	1.37	825	1.79								
5000	1194	558	0.58	600	0.76	642	0.95	689	1.15	774	1.56	849	2.01	921	2.48	990	2.97				
5500	1313	605	0.73	644	0.93	682	1.13	721	1.34	805	1.78	877	2.26	945	2.75	1009	3.27	1072	3.81		
6000	1433	653	0.91	689	1.12	724	1.34	758	1.57	836	2.03	907	2.53	972	3.05	1033	3.60	1092	4.16	1150	4.74
6500	1552	702	1.12	735	1.34	767	1.58	799	1.82	868	2.32	938	2.84	1001	3.39	1060	3.96	1117	4.55	1171	5.15
7000	1672	751	1.36	782	1.60	812	1.85	842	2.11	902	2.64	970	3.18	1032	3.75	1089	4.35	1144	4.97	1196	5.61
7500	1791	801	1.63	829	1.89	858	2.16	885	2.43	941	2.99	1001	3.57	1064	4.16	1120	4.78	1173	5.42	1223	6.08
8000	1911	850	1.94	877	2.22	904	2.50	930	2.79	982	3.38	1035	3.99	1095	4.61	1151	5.25	1203	5.92	1252	6.60
8500	2030	900	2.29	925	2.58	951	2.88	975	3.18	1024	3.81	1073	4.45	1126	5.10	1183	5.76	1234	6.45		
9000	2149	950	2.68	974	2.99	998	3.30	1021	3.62	1068	4.28	1114	4.95	1161	5.63	1214	6.33	1265	7.03		
9500	2269	1000	3.11	1023	3.44	1046	3.77	1068	4.10	1112	4.79	1156	5.49	1199	6.21	1246	6.94				
10000	2388	1050	3.59	1072	3.94	1094	4.28	1115	4.64	1157	5.35	1198	6.08	1239	6.83						
10500	2508	1100	4.13	1121	4.48	1142	4.84	1162	5.21	1202	5.96	1242	6.72								
11000	2627	1151	4.71	1171	5.08	1191	5.46	1210	5.84	1248	6.62										
11500	2746	1201	5.34	1221	5.73	1239	6.12	1258	6.53												
12000	2866	1252	6.03	1270	6.44																

Power rating (BHP) does not include drive losses. Performance ratings do not include the effects of appurtenances in the airstream. Performance shown is for installation type B-Free inlet, Ducted outlet.

Size

3000 SISW

Design 7520 BI Vent Sets

Wheel Diameter = 30.00 in.
 Outlet Area = 5.17 sq. ft. inside
 Maximum BHP = 6.12 x (RPM/1000)³
 Tip Speed, fpm = 7.85 x RPM

Maximum RPM 1146

Volume O.Vel		1/4"SP		1/2"SP		3/4"SP		1"SP		1-1/2"SP		2"SP		2-1/2"SP		3"SP		3-1/2"SP		4"SP		
CFM	FPM	RPM	BHP	RPM	BHP	RPM	BHP	RPM	BHP	RPM	BHP	RPM	BHP	RPM	BHP	RPM	BHP	RPM	BHP	RPM	BHP	
2600	503	288	0.14	366	0.26																	
2800	542	297	0.15	372	0.28																	
3000	580	306	0.17	379	0.30																	
3200	619	316	0.19	387	0.32	449	0.48															
3400	658	325	0.21	395	0.35	455	0.51															
3600	696	336	0.23	404	0.38	462	0.54	516	0.71													
3800	735	347	0.25	413	0.41	469	0.57	521	0.75													
4000	774	359	0.28	422	0.44	477	0.61	527	0.79													
4500	870	390	0.35	445	0.53	499	0.71	546	0.91	634	1.34											
5000	967	423	0.44	470	0.63	522	0.83	567	1.04	649	1.49											
5500	1064	456	0.55	498	0.75	544	0.96	590	1.18	668	1.67	741	2.18									
6000	1161	490	0.67	529	0.89	569	1.12	612	1.35	689	1.86	758	2.40	823	2.97							
6500	1257	525	0.81	561	1.04	596	1.29	635	1.54	711	2.07	777	2.64	840	3.24	900	3.86					
7000	1354	559	0.97	593	1.22	626	1.48	660	1.75	734	2.30	798	2.90	858	3.52	915	4.17	971	4.85			
7500	1451	595	1.16	626	1.42	657	1.70	688	1.98	757	2.56	821	3.18	879	3.83	934	4.51	986	5.20	1038	5.93	
8000	1548	630	1.37	660	1.65	689	1.94	718	2.24	780	2.85	843	3.49	900	4.16	953	4.87	1004	5.60	1053	6.34	
8500	1644	666	1.60	694	1.90	722	2.21	749	2.52	804	3.16	866	3.83	922	4.52	974	5.25	1024	6.01	1071	6.78	
9000	1741	702	1.86	728	2.18	754	2.50	780	2.83	832	3.50	889	4.20	945	4.92	996	5.67	1044	6.45	1091	7.26	
9500	1838	738	2.15	763	2.48	788	2.82	812	3.17	861	3.87	913	4.60	968	5.34	1019	6.12	1066	6.92	1111	7.76	
10000	1934	774	2.47	798	2.82	822	3.17	845	3.53	891	4.28	938	5.03	991	5.80	1042	6.60	1088	7.43	1132	8.29	
11000	2128	847	3.21	869	3.59	890	3.98	912	4.37	954	5.17	996	5.99	1039	6.83	1087	7.68	1134	8.55			
12000	2321	920	4.10	940	4.51	960	4.92	980	5.35	1019	6.21	1057	7.09	1095	8.00	1135	8.91					
13000	2515	993	5.13	1012	5.58	1030	6.02	1049	6.48	1085	7.40	1120	8.34									
14000	2708	1066	6.33	1084	6.81	1101	7.29	1118	7.78													
15000	2902	1140	7.71																			

Power rating (BHP) does not include drive losses. Performance ratings do not include the effects of appurtenances in the airstream. Performance shown is for installation type B-Free inlet, Ducted outlet.



Wheel Diameter = 33.00 in.
 Outlet Area = 6.26 sq. ft. inside
 Maximum BHP = 10.1 x (RPM/1000)³
 Tip Speed, fpm = 8.64 x RPM

Maximum RPM 997

Size
3300 SISW

Design 7520 BI Vent Sets

Volume O.Vel		1/4"SP		1/2"SP		3/4"SP		1"SP		1-1/2"SP		2"SP		2-1/2"SP		3"SP		3-1/2"SP		4"SP	
CFM	FPM	RPM	BHP	RPM	BHP	RPM	BHP	RPM	BHP	RPM	BHP	RPM	BHP	RPM	BHP	RPM	BHP	RPM	BHP	RPM	BHP
3500	559	269	0.19	338	0.35																
4000	639	288	0.24	351	0.40	408	0.60														
4500	719	308	0.29	366	0.47	419	0.68	469	0.90												
5000	799	330	0.36	383	0.55	433	0.76	480	1.00												
5500	879	354	0.44	401	0.64	448	0.86	492	1.11	574	1.65										
6000	959	378	0.53	420	0.75	464	0.98	506	1.23	584	1.80										
6500	1038	403	0.64	442	0.87	482	1.11	522	1.37	596	1.96	666	2.60								
7000	1118	428	0.76	464	1.00	501	1.26	539	1.53	610	2.13	676	2.79								
7500	1198	454	0.90	487	1.15	521	1.43	556	1.71	624	2.32	688	3.01	749	3.74						
8000	1278	479	1.05	511	1.33	542	1.61	575	1.91	640	2.53	701	3.23	760	3.99	816	4.79				
8500	1358	505	1.22	536	1.52	565	1.81	595	2.12	657	2.77	716	3.49	772	4.26	826	5.08				
9000	1438	531	1.41	560	1.73	588	2.03	616	2.36	674	3.03	731	3.76	785	4.55	838	5.39	888	6.28	937	7.19
9500	1518	557	1.62	585	1.96	612	2.28	638	2.61	693	3.32	748	4.06	800	4.87	850	5.73	899	6.63	946	7.56
10000	1598	583	1.84	611	2.21	636	2.55	660	2.89	712	3.63	765	4.39	815	5.21	864	6.09	912	7.01	958	7.97
10500	1678	609	2.09	636	2.48	660	2.84	684	3.20	732	3.96	782	4.75	832	5.58	879	6.47	925	7.41	970	8.39
11000	1757	635	2.37	662	2.78	685	3.16	708	3.53	753	4.31	801	5.13	848	5.98	894	6.89	939	7.84	982	8.84
11500	1837	662	2.67	687	3.09	710	3.50	732	3.88	775	4.69	820	5.54	866	6.41	911	7.33	954	8.30	996	9.32
12000	1917	688	2.99	713	3.43	735	3.87	756	4.27	797	5.10	840	5.98	884	6.87	927	7.81	970	8.79		
12500	1997	715	3.34	739	3.80	760	4.25	781	4.68	820	5.53	861	6.44	903	7.37	945	8.32	986	9.32		
13000	2077	742	3.72	765	4.20	786	4.67	806	5.12	844	6.00	882	6.93	922	7.89	963	8.87				
13500	2157	769	4.12	791	4.63	811	5.12	831	5.60	868	6.51	904	7.45	942	8.44	981	9.45				
14000	2237	795	4.56	817	5.08	837	5.60	856	6.09	892	7.04	927	8.00	963	9.03						
15000	2397	849	5.52	869	6.08	888	6.64	907	7.18	941	8.22	973	9.22								
16000	2556	903	6.62	922	7.22	940	7.82	958	8.40	991	9.51										
17000	2716	958	7.86	975	8.50	992	9.13														

Power rating (BHP) does not include drive losses. Performance ratings do not include the effects of appurtenances in the airstream. Performance shown is for installation type B-Free inlet, Ducted outlet.

Wheel Diameter = 36.50 in.
 Outlet Area = 7.65 sq. ft. inside
 Maximum BHP = 16.8 x (RPM/1000)³
 Tip Speed, fpm = 9.56 x RPM

Maximum RPM 942

Size
3650 SISW

Design 7520 BI Vent Sets

Volume O.Vel		1/4"SP		1/2"SP		3/4"SP		1"SP		1-1/2"SP		2"SP		2-1/2"SP		3"SP		3-1/2"SP		4"SP		
CFM	FPM	RPM	BHP	RPM	BHP	RPM	BHP	RPM	BHP	RPM	BHP	RPM	BHP	RPM	BHP	RPM	BHP	RPM	BHP	RPM	BHP	
4500	588	249	0.25	310	0.45																	
5000	653	263	0.30	320	0.51	371	0.75															
5500	718	278	0.36	331	0.58	379	0.83	424	1.10													
6000	784	295	0.43	343	0.65	389	0.91	432	1.20													
6500	849	312	0.50	356	0.74	400	1.01	440	1.30													
7000	914	330	0.59	370	0.84	411	1.12	450	1.42	523	2.10											
7500	979	348	0.69	385	0.95	424	1.24	461	1.55	531	2.25											
8000	1045	366	0.80	401	1.07	437	1.37	473	1.69	540	2.41	603	3.20									
8500	1110	385	0.92	417	1.21	451	1.52	485	1.85	550	2.58	610	3.39									
9000	1175	403	1.05	434	1.36	466	1.68	498	2.02	560	2.77	619	3.60	674	4.49							
9500	1241	422	1.20	452	1.52	481	1.86	512	2.22	572	2.98	628	3.82	682	4.73	733	5.70					
10000	1306	441	1.36	470	1.70	497	2.05	526	2.42	584	3.20	639	4.06	691	4.99	740	5.98					
10500	1371	460	1.53	488	1.90	514	2.26	541	2.64	596	3.44	650	4.32	700	5.27	748	6.28	795	7.33			
11000	1437	479	1.72	506	2.11	531	2.48	557	2.88	609	3.71	661	4.60	710	5.56	757	6.59	803	7.67	847	8.79	
12000	1567	518	2.15	543	2.58	566	2.99	589	3.40	637	4.29	685	5.21	732	6.21	776	7.27	820	8.39	862	9.55	
13000	1698	557	2.64	581	3.12	603	3.57	624	4.01	667	4.95	712	5.92	756	6.95	798	8.04	839	9.19	880	10.41	
14000	1828	596	3.22	619	3.74	639	4.23	659	4.70	698	5.68	739	6.72	781	7.78	821	8.90	861	10.09	899	11.33	
15000	1959	635	3.88	657	4.43	677	4.97	695	5.49	732	6.51	769	7.60	808	8.72	847	9.88	884	11.08	921	12.36	
16000	2090	675	4.62	695	5.22	714	5.80	732	6.35	766	7.44	801	8.57	837	9.76	873	10.95	909	12.20			
17000	2220	714	5.46	733	6.10	752	6.72	769	7.33	802	8.47	834	9.65	867	10.89	901	12.15	935	13.43			
18000	2351	754	6.40	772	7.07	790	7.74	807	8.38	838	9.62	868	10.84	899	12.12	930	13.44					
19000	2481	794	7.45	811	8.16	828	8.87	844	9.56	874	10.87	903	12.15	932	13.46							
20000	2612	834	8.61	850	9.36	867	10.10	882	10.83	911	12.24	939	13.58									
21000	2743	874	9.89	890	10.67	905	11.45	920	12.22													
22000	2873	914	11.28	929	12.10																	

Power rating (BHP) does not include drive losses. Performance ratings do not include the effects of appurtenances in the airstream. Performance shown is for installation type B-Free inlet, Ducted outlet.



Wheel Diameter = 9.125 in.
 Outlet Area = 0.48 sq. ft. inside
 Maximum BHP = .016 x (RPM/1000)³
 Tip Speed, fpm = 2.39 x RPM

Size

912 SISW

Maximum RPM 3597

Design 7530 SC Vent Sets

Volume O.Vel		1/4"SP		1/2"SP		3/4"SP		1"SP		1-1/2"SP		2"SP		2-1/2"SP		3"SP		3-1/2"SP		4"SP	
CFM	FPM	RPM	BHP	RPM	BHP	RPM	BHP	RPM	BHP	RPM	BHP	RPM	BHP	RPM	BHP	RPM	BHP	RPM	BHP	RPM	BHP
200	422	930	0.01																		
250	527	1009	0.02	1272	0.03																
300	633	1088	0.02	1341	0.04	1552	0.05														
350	738	1175	0.03	1421	0.04	1616	0.06	1796	0.08												
400	844	1272	0.03	1499	0.05	1693	0.07	1859	0.09												
450	949	1378	0.04	1581	0.06	1773	0.09	1937	0.11	2223	0.16										
500	1054	1489	0.05	1670	0.07	1852	0.10	2017	0.13	2291	0.18	2543	0.23								
550	1160	1602	0.06	1767	0.09	1934	0.11	2095	0.14	2369	0.20	2606	0.25	2834	0.32						
600	1265	1719	0.08	1871	0.10	2022	0.13	2175	0.16	2449	0.22	2680	0.28	2893	0.35	3101	0.42				
650	1371	1836	0.10	1978	0.12	2117	0.15	2259	0.18	2528	0.25	2758	0.31	2963	0.38	3158	0.45	3351	0.53		
700	1476	1956	0.11	2089	0.14	2218	0.17	2348	0.21	2607	0.28	2839	0.35	3040	0.42	3228	0.49	3408	0.57	3586	0.65
750	1582	2076	0.14	2202	0.17	2323	0.20	2443	0.23	2688	0.31	2918	0.38	3122	0.46	3303	0.53	3476	0.61		
800	1687	2198	0.16	2317	0.19	2431	0.23	2543	0.26	2772	0.34	2996	0.42	3200	0.50	3382	0.58	3552	0.66		
850	1793	2319	0.19	2434	0.22	2542	0.26	2648	0.29	2861	0.37	3076	0.46	3279	0.55	3463	0.63				
900	1898	2442	0.22	2551	0.26	2655	0.29	2755	0.33	2955	0.41	3160	0.50	3357	0.59	3542	0.68				
950	2003	2566	0.25	2670	0.29	2769	0.33	2865	0.37	3054	0.46	3246	0.55	3438	0.64						
1000	2109	2690	0.29	2789	0.33	2884	0.37	2976	0.41	3156	0.50	3337	0.59	3521	0.69						
1050	2214	2814	0.33	2910	0.38	3001	0.42	3089	0.46	3261	0.55	3432	0.65								
1100	2320	2939	0.38	3031	0.42	3119	0.47	3204	0.51	3368	0.61	3531	0.70								
1150	2425	3064	0.43	3153	0.48	3238	0.52	3319	0.57	3478	0.66										
1200	2531	3190	0.49	3275	0.53	3357	0.58	3436	0.63	3589	0.73										
1250	2636	3316	0.54	3398	0.59	3477	0.64	3553	0.69												
1300	2742	3442	0.61	3521	0.66	3597	0.71														
1350	2847	3568	0.68																		

Power rating (BHP) does not include drive losses. Performance ratings do not include the effects of appurtenances in the airstream. Performance shown is for installation type B-Free inlet, Ducted outlet. AMCA Certified Ratings Seal does not apply to the above data.

Wheel Diameter = 12.25 in.
 Outlet Area = 0.86 sq. ft. inside
 Maximum BHP = .069 x (RPM/1000)³
 Tip Speed, fpm = 3.21 x RPM

Size

1225 SISW

Maximum RPM 2885

Design 7530 SC Vent Sets

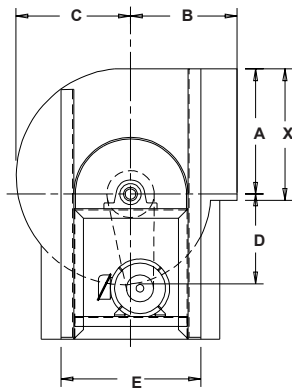
Volume O.Vel		1/4"SP		1/2"SP		3/4"SP		1"SP		1-1/2"SP		2"SP		2-1/2"SP		3"SP		3-1/2"SP		4"SP	
CFM	FPM	RPM	BHP	RPM	BHP	RPM	BHP	RPM	BHP	RPM	BHP	RPM	BHP	RPM	BHP	RPM	BHP	RPM	BHP	RPM	BHP
300	348	657	0.02																		
350	406	672	0.02																		
400	464	695	0.02	924	0.05																
450	522	720	0.02	935	0.05	1126	0.08														
500	580	748	0.03	953	0.05	1134	0.08														
600	696	819	0.04	1000	0.07	1162	0.10	1314	0.13												
700	812	907	0.05	1054	0.08	1207	0.11	1344	0.15	1602	0.24										
800	928	1004	0.07	1121	0.10	1258	0.13	1390	0.17	1625	0.26	1847	0.36								
900	1044	1107	0.09	1202	0.12	1317	0.16	1440	0.20	1664	0.29	1869	0.39	2066	0.51	2249	0.63				
1000	1160	1212	0.12	1292	0.15	1388	0.18	1496	0.23	1712	0.33	1904	0.43	2087	0.55	2265	0.67	2432	0.80		
1100	1276	1320	0.16	1389	0.19	1469	0.22	1562	0.26	1762	0.37	1949	0.48	2121	0.59	2287	0.72	2449	0.86	2606	1.00
1200	1392	1429	0.20	1489	0.23	1559	0.26	1638	0.30	1816	0.41	1998	0.53	2164	0.65	2321	0.78	2473	0.91	2624	1.06
1300	1508	1539	0.25	1593	0.28	1654	0.31	1722	0.35	1879	0.46	2049	0.58	2213	0.71	2364	0.84	2507	0.98	2649	1.13
1400	1624	1649	0.31	1699	0.34	1753	0.37	1813	0.41	1951	0.51	2105	0.64	2263	0.77	2412	0.91	2550	1.06	2684	1.21
1500	1740	1761	0.38	1807	0.41	1855	0.44	1908	0.48	2030	0.58	2169	0.70	2316	0.84	2461	0.99	2599	1.14	2727	1.29
1600	1856	1872	0.45	1915	0.48	1960	0.52	2007	0.56	2116	0.65	2239	0.78	2374	0.92	2512	1.07	2647	1.23	2775	1.39
1700	1972	1984	0.54	2024	0.57	2065	0.61	2109	0.65	2206	0.74	2317	0.86	2439	1.00	2568	1.16	2698	1.32	2824	1.49
1800	2088	2096	0.63	2134	0.67	2172	0.71	2213	0.75	2301	0.84	2401	0.96	2511	1.09	2630	1.25	2752	1.42	2875	1.59
1900	2204	2208	0.74	2244	0.78	2280	0.82	2318	0.86	2398	0.95	2489	1.07	2589	1.20	2698	1.36	2812	1.52		
2000	2320	2320	0.86	2355	0.90	2389	0.94	2424	0.98	2498	1.08	2581	1.19	2672	1.32	2771	1.47	2877	1.64		
2100	2436	2433	0.99	2466	1.03	2499	1.08	2531	1.12	2600	1.22	2676	1.33	2760	1.45	2850	1.60				
2200	2552	2546	1.13	2577	1.18	2608	1.22	2639	1.27	2704	1.37	2774	1.48	2851	1.60						
2300	2668	2659	1.29	2689	1.34	2719	1.38	2748	1.43	2809	1.53	2875	1.64								
2400	2784	2772	1.46	2801	1.51	2829	1.56	2858	1.61												
2500	2900	2885	1.65																		

Power rating (BHP) does not include drive losses. Performance ratings do not include the effects of appurtenances in the airstream. Performance shown is for installation type B-Free inlet, Ducted outlet. AMCA Certified Ratings Seal does not apply to the above data.

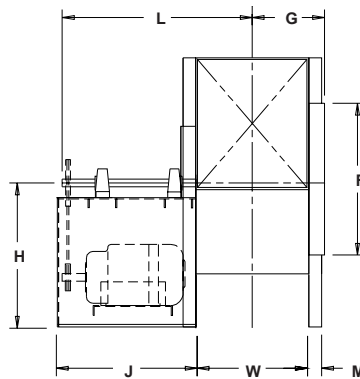


Arrangement 10

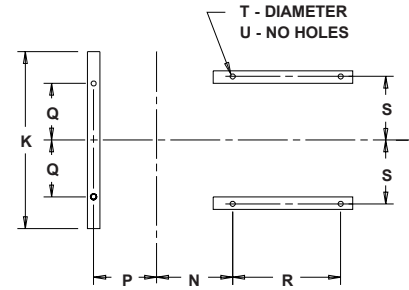
Size 912 Through 3650



SIDE ELEVATION (DRIVE SIDE)



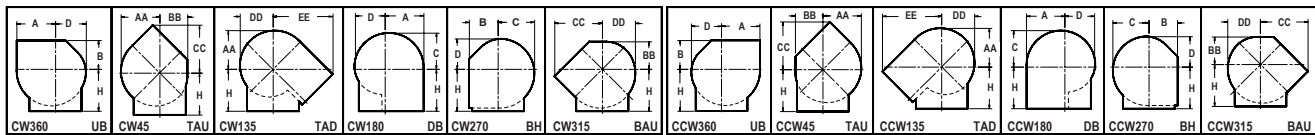
FRONT ELEVATION



FOUNDATION (PLAN)

CW 90 TH SHOWN
CCW 90 TH OPPOSITE HAND

ROTATION AND DISCHARGE POSITIONS (DRIVE SIDE)



DIMENSIONS - INCH

FAN SIZE	SHAFT DIA.	KEYWAY	A	B	C	D	E	F	G	H	J	K	L
* 912	3/4	3/16 x 3/32	8-25/32	8-1/2	8-1/4	6-7/8	15-1/2	12-3/4	5-3/16	19	19	-	22-11/16
** 1225	3/4	3/16 x 3/32	11-25/32	9-1/2	11-1/16	9-1/4	15-1/2	15-7/8	6-7/16	19	19	-	23-15/16
1350	15/16	1/4 x 1/8	13	10-1/2	12-1/4	10-3/16	16	17-1/8	6-15/16	19	19	-	24-7/16
1500	15/16	1/4 x 1/8	14-7/16	11-1/4	13-9/16	11-5/16	16	18-5/8	7-1/2	19	19	-	25
1650	15/16	1/4 x 1/8	15-7/8	12-1/4	14-15/16	12-7/16	18	20-1/8	8-1/8	20	20	-	26-5/8
1825	15/16	1/4 x 1/8	17-9/16	13-1/4	16-1/2	13-3/4	18	21-7/8	8-13/16	20	20	-	27-5/16
2000	1-3/16	1/4 x 1/8	19-1/4	15-1/2	18-1/16	15-1/16	22	24-1/8	10	23-1/2	22	28-1/8	30
2225	1-3/16	1/4 x 1/8	21-3/8	17-3/4	20-1/8	16-3/4	22	26-3/8	10-15/16	23-1/2	22	30-3/8	30-15/16
2450	1-3/16	1/4 x 1/8	23-9/16	19-1/2	22-1/8	18-1/2	26	28-5/8	11-3/4	28	23	32-5/8	32-3/4
2700	1-3/16	1/4 x 1/8	25-31/32	21-1/4	24-3/8	20-3/8	26	31-1/8	12-3/4	28	23	35-1/8	33-3/4
3000	1-7/16	3/8 x 3/16	28-27/32	23-1/4	27-1/16	22-5/8	31	34-5/8	13-15/16	31	25	38-5/8	36-15/16
3300	1-7/16	3/8 x 3/16	31-23/32	24-3/4	29-3/4	24-7/8	35	37-5/8	15-5/8	34	27	41-5/8	40-1/8
3650	1-7/16	3/8 x 3/16	35-1/16	26-1/2	32-15/16	27-1/2	37	41-1/8	17-1/16	37	29	45-1/8	43-9/16

FAN SIZE	M	N	P	Q	R	S	T	U	W	X	AA	BB	CC	DD
* 912	-	6-3/4	-	-	14	7-1/8	1/2	4	7-3/8	9-11/16	8-13/16	6-1/4	10-7/8	7-1/2
** 1225	-	8	-	-	14	7-1/8	1/2	4	9-13/16	12-15/16	11-13/16	8-3/8	15-1/16	10-1/8
1350	-	8-1/2	-	-	14	7-3/8	1/2	4	10-13/16	14-1/4	13	9-1/4	16-5/8	11-1/16
1500	-	9	-	-	14	7-3/8	1/2	4	12	15-3/4	14-7/16	10-1/4	18-3/16	12-1/4
1650	-	9-1/2	-	-	15	8-3/8	1/2	4	13-3/16	17-3/8	15-7/8	11-5/16	19-7/8	13-1/2
1825	-	10-1/4	-	-	15	8-3/8	1/2	4	14-9/16	19-3/16	17-5/8	12-1/2	21-3/4	14-15/16
2000	2	13	8-7/8	12-1/2	15	10-1/8	5/8	6	16	21	19-1/4	13-11/16	24-9/16	16-3/8
2225	2	14	10	13-3/4	15	10-1/8	5/8	6	17-13/16	23-3/8	21-7/16	15-1/4	27-11/16	18-1/4
2450	2	14-3/4	10-7/8	14-3/4	16	12-1/8	5/8	6	19-1/2	25-3/4	23-5/8	16-3/4	30-7/16	20-1/16
2700	2	15-3/4	11-7/8	16	16	12-1/8	5/8	6	21-1/2	28-3/8	26	18-1/2	33-3/16	22-1/8
3000	2-1/2	18	13-1/16	17-3/4	17	14-3/8	5/8	6	23-7/8	31-1/2	28-7/8	20-9/16	36-7/8	24-9/16
3300	2-1/2	19	14-1/2	19-1/4	19	16-3/8	5/8	6	26-1/4	34-5/8	31-3/4	22-9/16	39-15/16	27
3650	2-1/2	20-1/2	15-7/8	21	21	17-3/8	5/8	6	29-1/16	38-1/4	35-1/8	24-15/16	43-9/16	29-7/8

* Size 912 available with Design 7530 wheel only.

** Size 1225 also available with Design 7530 wheel.

DO NOT USE FOR CONSTRUCTION UNLESS CERTIFIED.



CML Northern Blower Inc. certifies that the Series 7500, Design 7510 Airfoil Vent Set and Design 7520 Backward Inclined Vent Set, shown herein are licensed to bear the AMCA seal. Note that the Design 7530, Single Camber Wheel is not licensed to bear the AMCA seal. Fan Sound Ratings are based on tests and procedures in accordance with AMCA Publication 211 and AMCA Publication 311, and comply with the requirements of the AMCA Certified Ratings Program.

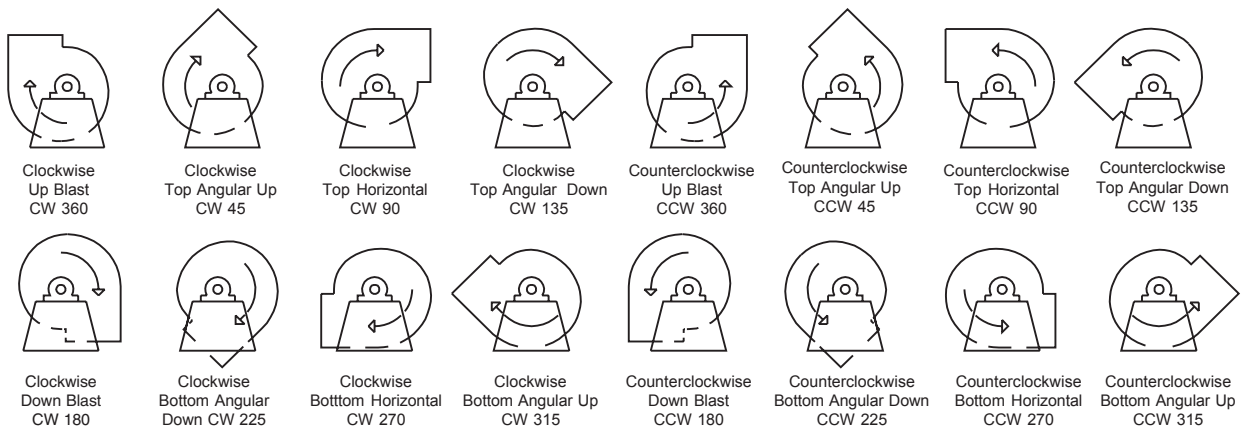
Sound data was obtained in accordance with AMCA Standard 300, Reverberant Room Method of Sound Testing of Fans, published in accordance with AMCA Standard 301, Methods for Calculating Fan Sound Ratings from Laboratory Test data.

Upon request Northern Blower will provide Sound Level Ratings for any fan selection from this catalogue. Refer also to the Northern Blower Sound Bulletin.

Fan sound data testing was conducted according to AMCA Standard 300. The Certified Sound Ratings Seal provides increased assurance that the published sound ratings are both reliable and accurate.

Fan Geometry

Designations for Rotation and Discharge of Centrifugal Fans



Notes:

- 1) Direction of rotation is determined from the drive side of the fan.
- 2) Direction of discharge is determined in accordance with the diagrams. Angle of discharge is referred to the vertical axis of the fan and designated in degrees from such standard reference axis. Angle of discharge may be any intermediate angle as required.
- 3) For a fan inverted for ceiling suspension, or side wall mounting, the direction of rotation and discharge is determined when the fan is resting on the floor.



CML Northern Blower Inc.
901 Regent Avenue West
Winnipeg, Manitoba
Canada R2C 2Z8

 204.222.4216

 204.222.7601

 cml@northernblower.com

 www.northernblower.com