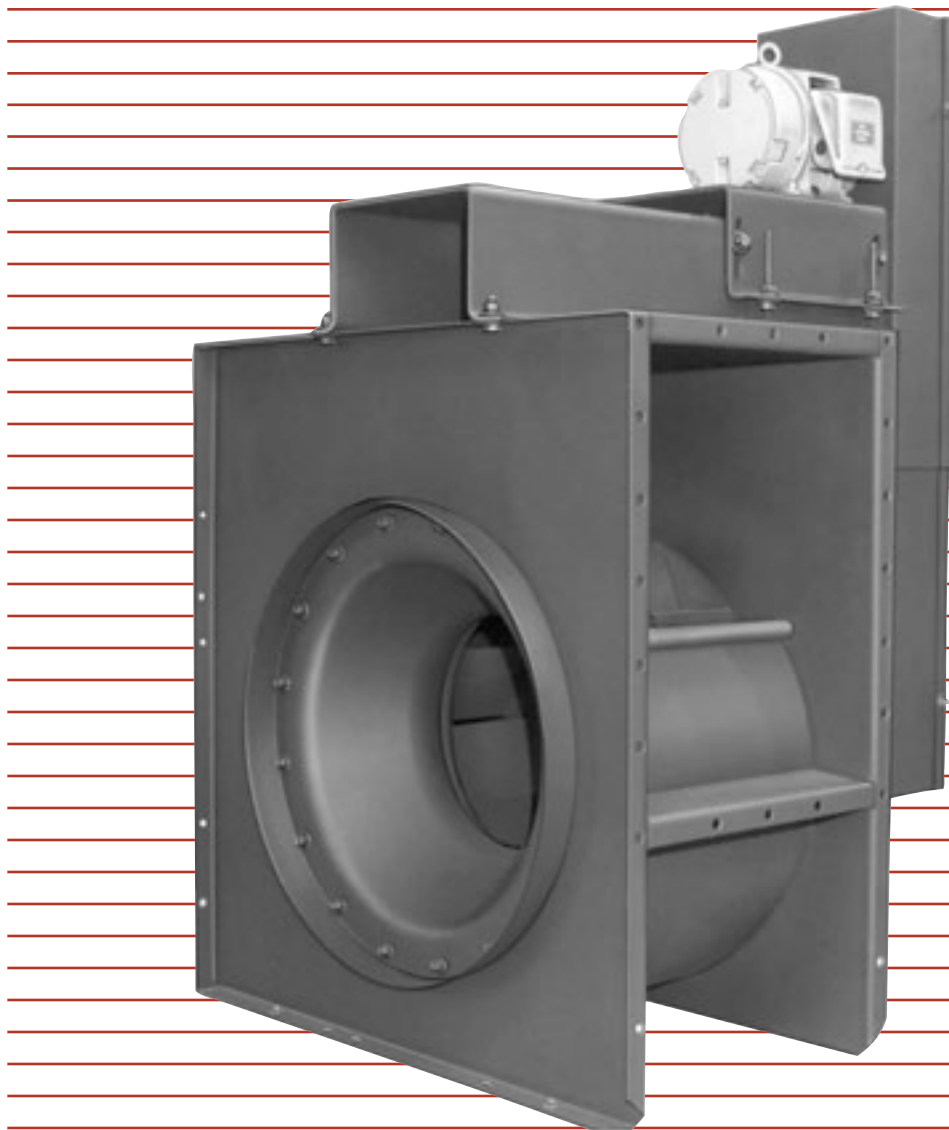


Series 7600 Centrifugal Airfoil Fan

Design 7610 • Class I, II, & III



Series 7600 Centrifugal Airfoil Fans

The Design 7610 Airfoil fan is a quiet, highly efficient, and stable operating fan suited for a broad range of industrial and commercial applications.

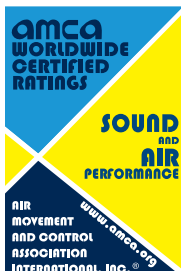
**Commercial air conditioning systems,
general supply and exhaust
ventilation:**

Public Buildings
Hospitals
Warehouses
Offices
Department Stores
Schools

Industrial supply and exhaust:

Forced Draft
Combustion Air Supply
Locomotive Traction Motor Cooling
Spray Booth Supply and Exhaust
Pulp and Paper Machines
Grain Drying
Drying Kilns

Design Features	2
General Information	3
Accessories	4
Selection	6
Performance Data	8
Dimensions	24
Sound Data	27
Fan Geometry	27
Centrifugal Fan Arrangements	28



Northern Blower Inc. certifies that the Series 7600, Design 7610 Airfoil Fan shown herein is licensed to bear the AMCA seal. The ratings shown are based on tests and procedures performed in accordance with AMCA publication 211 and AMCA publication 311 and comply with the requirements of the AMCA Certified Ratings program.

Housing & Framing

Rugged heavy gauge all welded steel housings with substantial framing sections for maximum rigidity.

Airfoil Wheel

Superior combination of high efficiency, stable operation and low noise level.



Bearings

Heavy duty precision ball or roller bearings sized for generous B-10 life.

Shafts

Turned ground and polished or fully machined to close dimensional tolerance.

Balancing

Wheels are dynamically balanced to ISO 1940 specifications for smooth operation.

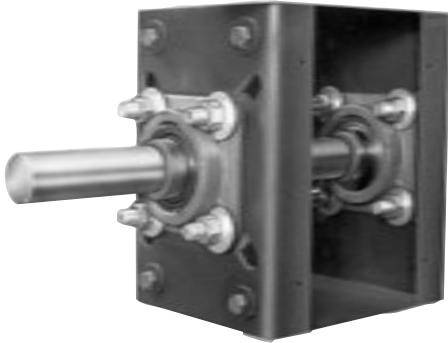
Shafts and Bearings

Shafts

Selected to have suitable strength and operated well below the first critical speed for each maximum class condition.

Bearings

Antifriction, grease lubricated, self aligning ball or roller types, solid or split housing, manufactured to internationally adopted standards by companies having worldwide acceptance and support services. Bearings are selected for continuous belt driven operation with a generous bearing life throughout each full class range.



Arrangement	Fan Size Range	
	Class I & II	Class III
1 - SW	1225 - 5425	2225 - 5425
9 - SW	1225 - 5425	2225 - 5425

Capacities

350 CFM to 85,000 CFM

Pressures

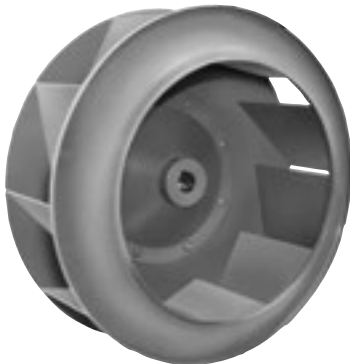
- Class I to 9" S.P. (Size 1225 - 3000)
- Class I to 8" S.P. (Size 3300 - 5425)
- Class II to 12" S.P. (Size 1225 - 5425)
- Class III to 21" S.P. (Size 2225 - 5425)

Temperatures

Operating Temperatures to 800°F
See Table 2, Page 6

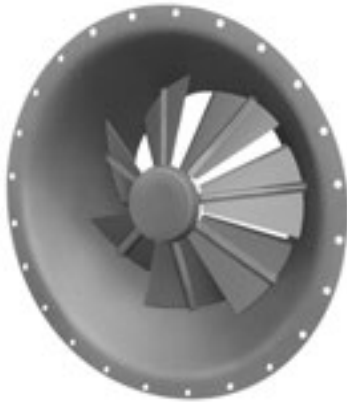
Design 7620 Centrifugal Airfoil Wheel

The Northern Blower Airfoil wheel is designed for high operating efficiency. Blades are die formed hollow airfoil sections reinforced as required for class of duty. Continuously welded steel construction is standard. Available from 12 1/4" to 54 1/4" diameters.



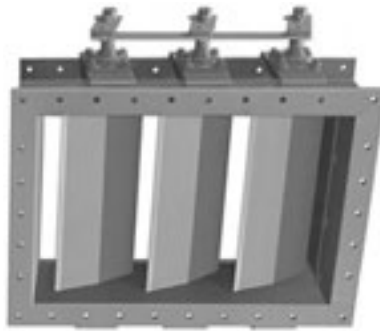
Variable Inlet Vanes

Variable Inlet Vanes provide accurate volume control with minimal reduction in performance efficiency. Fan performance remains stable through fully open to fully closed positions. Available for both manual and automatic operation to temperatures of 300° F. Special design available for temperatures to 650° F.



Outlet Damper

Outlet Dampers are the least expensive air volume control device but are less efficient than Variable Inlet Vanes or Inlet Box with Inlet Damper. Northern Blower Outlet Dampers have punched flanges on both ends to allow for convenient fan and duct connections. Both parallel blade and opposed blade designs are available for operating temperatures to 650° F.



Shaft and Bearing Guard

Encloses the shaft and bearings from the fan drive side to just beyond the outboard fan bearing. Guard includes accessible grease fittings for both bearings.



Raised Access Door

Access door raised 6" beyond scroll surface to provide room for insulation on exterior of fan housing. Insulated door plug surface is flush with inside of housing scroll.



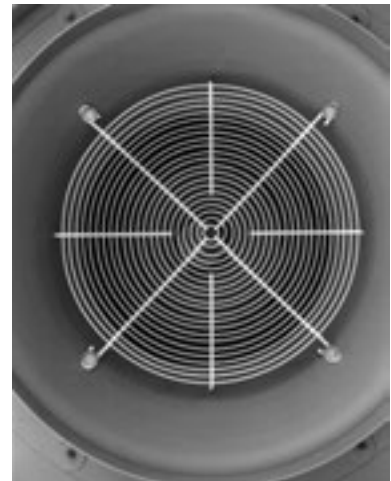
Flush Access Door

Access door mounted flush to the fan scroll and secured with bolted clips. Quick release handle system also available.



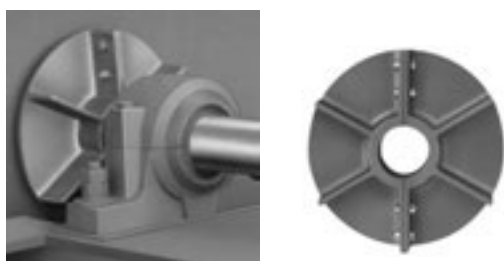
Inlet Screen

Steel screen mounted to the inlet cone.



Cooling Wheel

Split aluminum wheel mounted between the inboard bearing and the fan housing. Protects the inboard bearing from shaft conveyed heat and housing radiated heat. Supplied with protective guard as standard. Required for high temperature application; see Table 2 on Page 6.



Shaft Seal

Used to reduce leakage through the shaft hole in the housing. Seal material aluminum, brass, or compressed non-asbestos gasket sheet, depending on fan application.



Belt Guard

Enclosed on all sides for safe operation and vented to prevent overheating. Tachometer holes, hinged cover, and safety colour coatings also available.



Flanged Outlet/ Flanged Inlet

Punched flanges to facilitate the bolting of duct connections to the fan inlet and outlet. Flanged Outlet needed when the fan is to be fitted with an Outlet Damper.



Unitary Base

Rigid steel frame to provide a common mounting platform for fan and motor. May be ordered with spring or rubber-in-shear isolators and motor slide base.



Additional Accessories

- Spark Resistant Construction
- Protective Coatings
- Special Metals
- Drain Openings
- High Temperature Construction
- Extended Grease Fittings
- Insulation Clips
- Mounted Drive Package

Due to the wide variety of fans available from Northern Blower we are unable to publish all information in one bulletin. Further information on custom fans is available from your Northern Blower sales representative.

Fan Selection at Elevated Temperature and Altitude

Fan Selection Tables

Ratings shown in the Performance Tables are based on standard air density of .075 pounds per cubic foot at the fan inlet. Standard air is dry air at 70° F and 29.92" Hg barometric pressure. When air density varies from standard, due to temperature or altitude changes, the Air Density Correction Factor from Table 3 is applied. Refer to the sample selection that follows.

Note that data in the selection tables does not include the effects of accessories such as inlet dampers, outlet dampers, screens, or other components in the air stream.

High Temperature

Fan selected for high temperature service must fall within the limits for a particular arrangement as shown in Table 2. For selection, both fan performance and physical operating limits must be corrected. Refer to the sample selection on the following page.

Table 1

Wheel & Shaft Maximum Speeds at 70°F (SISW only)						
Size	Class I		Class II		Class III	
	Shaft	Wheel	Shaft	Wheel	Shaft	Wheel
1225	4029	4029	4846	4846		
1350	3644	4926	4446	4926		
1500	3267	4433	3986	4433		
1650	2969	4031	3623	4031		
1825	2657	3439	3244	3439		
2000	2430	3138	2956	3138		
2225	2180	2820	2669	2820	3357	3775
2450	1988	2562	2428	2562	3054	3310
2700	1804	2239	2203	2239	2771	2861
3000	1623	2143	1982	2141	2493	2637
3300	1447	1857	1769	1857	2225	2366
3650	1307	1782	1598	1782	2010	2142
4025	1134	1230	1450	1575	1824	1943
4450	1019	1058	1305	1352	1641	1747
4900	925	1024	1184	1305	1490	1548
5425	836	879	1071	1123	1347	1441

Table 2

High Temperature Operating Limits with Steel Wheels		
Arrangement	Without Cooling Wheel	With Cooling Wheel
1 SW	300°F	650°F *
9 SW	300°F	650°F

* Class III with cooling wheel and shaft seal to 800°F (Applies to pedestal base fans only)

Table 3

Air Density Correction Factor							
Air Temp °F	Elevation (feet) above Sea Level						
	0	500	1000	2000	3000	4000	5000
-40°	.79	.81	.82	.85	.88	.92	.95
0	.87	.88	.90	.93	.97	1.00	1.04
40°	.94	.96	.98	1.01	1.05	1.09	1.13
70°	1.00	1.02	1.04	1.08	1.12	1.16	1.20
100°	1.06	1.08	1.10	1.14	1.18	1.22	1.27
140°	1.13	1.15	1.17	1.22	1.26	1.31	1.36
180°	1.21	1.23	1.25	1.30	1.35	1.40	1.45
200	1.25	1.27	1.29	1.34	1.39	1.44	1.50
250°	1.34	1.36	1.39	1.44	1.49	1.55	1.61
300	1.43	1.46	1.49	1.54	1.60	1.66	1.72
350°	1.53	1.56	1.58	1.64	1.71	1.77	1.84
400°	1.62	1.65	1.68	1.75	1.81	1.88	1.95
450°	1.72	1.75	1.78	1.85	1.92	1.99	2.06
500°	1.81	1.84	1.88	1.95	2.02	2.10	2.18
600°	2.00	2.04	2.07	2.15	2.23	2.32	2.40
700°	2.19	2.23	2.27	2.35	2.44	2.53	2.63
800°	2.38	2.42	2.46	2.56	2.65	2.75	2.86

Table 4

Safe Speed Deration Factors		
Temp °F	Steel Wheel	Steel Shaft
-50 to 150	1.0	1.0
200	.93	1.0
300	.89	1.0
400	.86	.99
500	.82	.97
600	.79	.96
700	.76	.95
800	.68	.94

Sample Selection of a Belt Drive Fan

Select a fan for the operating conditions of 6000 CFM at 2-1/2" SP, 500°F and 1000 feet elevation.

$$\text{Operating BHP} = \frac{\text{Equivalent BHP}}{\text{Air Density Correction Factor}}$$

- 1) Multiply the Operating SP by the Air Density Correction Factor (Table 3) to obtain Equivalent SP:

$$= \frac{5.47}{1.88} = 2.91 \text{ BHP}$$

Equivalent SP = Operating SP x Air Density Corr. Factor
 = 2-1/2" x 1.88 = 4.7"

- 2) From the Performance Table, select the fan size.
 For 6000 CFM at 4.7" SP an efficient selection would be a size 2450 fan. Interpolating from the Performance Table given on page 14, the selection fan performance is 1526 RPM and 4.62 BHP at standard temperature and pressure.

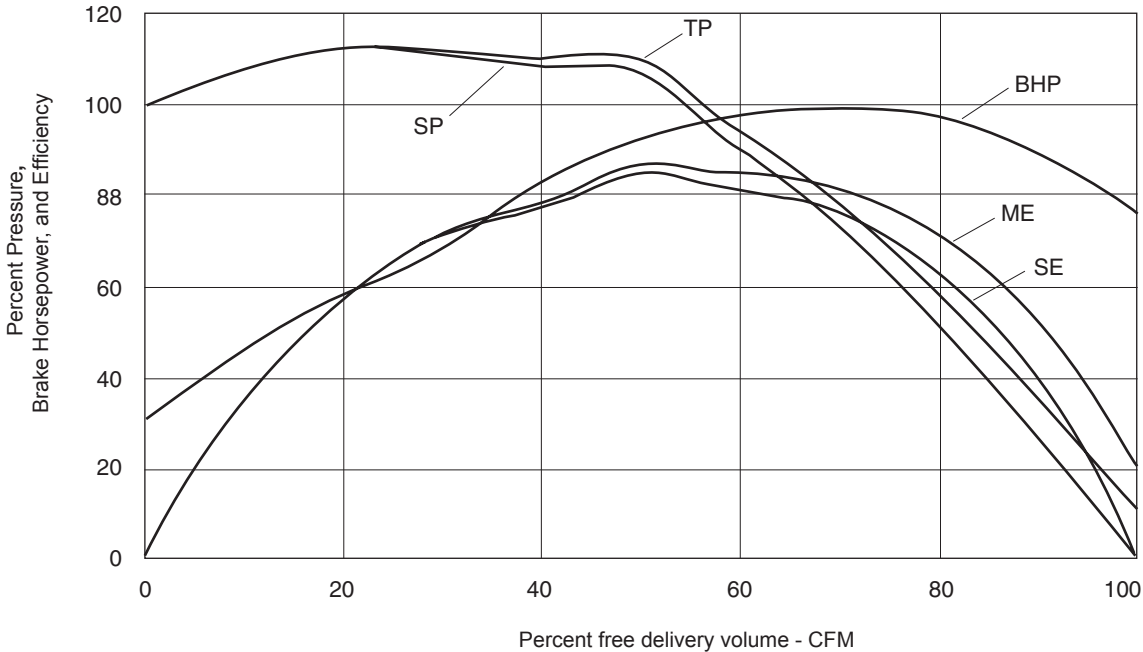
- 4) Multiply the Wheel & Shaft Maximum Speed at 70°F values (Table 1) by the Wheel & Shaft Safe Speed Deration Factors (Table 4). For size 2450, Class I, the maximum speed at 500° F is:

Wheel = 2562 x 0.82 = 2101 RPM
 Shaft = 1988 x 0.97 = 1928 RPM

- 3) Divide the Equivalent BHP by the Air Density Correction Factor to obtain the Operating BHP:

Since the fan selection speed of 1526 RPM is below **both** the maximum allowable wheel and shaft speeds, the Class I fan is a suitable selection.

Design 7610 Performance Curve



- High Efficiency
- Stable Operation
- Quiet

Wheel Diameter = 12.25 in.
 Outlet Area = 0.86 sq. ft. inside
 Maximum BHP = .053 x (RPM/1000)³
 Tip Speed, fpm = 3.21 x RPM

Size

1225 SISW

Class I RPM 4029
 Class II RPM 4846

Design 7610 Centrifugal Airfoil Fans

Volume O.Vel		1/4"SP		1/2"SP		3/4"SP		1"SP		1-1/4"SP		1-1/2"SP		1-3/4"SP		2"SP		2-1/4"SP		2-1/2"SP	
CFM	FPM	RPM	BHP	RPM	BHP	RPM	BHP	RPM	BHP	RPM	BHP	RPM	BHP	RPM	BHP	RPM	BHP	RPM	BHP	RPM	BHP
350	406	716	0.02	963	0.04	1159	0.07														
400	464	751	0.02	973	0.04	1173	0.07	1337	0.10												
450	522	793	0.03	990	0.05	1183	0.08	1352	0.11	1495	0.14										
500	580	834	0.03	1015	0.05	1195	0.08	1362	0.12	1511	0.15	1639	0.19								
600	696	913	0.04	1090	0.07	1236	0.10	1387	0.13	1531	0.17	1665	0.21	1789	0.25	1902	0.30	2005	0.34		
700	812	1004	0.05	1174	0.08	1306	0.12	1431	0.15	1561	0.19	1688	0.23	1809	0.28	1925	0.32	2032	0.37	2133	0.42
800	928	1105	0.07	1252	0.10	1390	0.14	1501	0.17	1610	0.21	1724	0.26	1836	0.30	1946	0.35	2052	0.41	2154	0.46
900	1044	1210	0.09	1336	0.12	1472	0.17	1585	0.21	1682	0.25	1779	0.29	1878	0.34	1979	0.39	2079	0.44	2177	0.50
1000	1160	1317	0.11	1430	0.15	1549	0.20	1668	0.24	1767	0.29	1854	0.33	1940	0.38	2029	0.43	2119	0.48	2210	0.54
1100	1276	1428	0.14	1530	0.18	1633	0.23	1746	0.28	1850	0.33	1939	0.38	2019	0.43	2097	0.48	2176	0.53	2257	0.59
1200	1392	1540	0.17	1633	0.21	1727	0.27	1825	0.32	1928	0.38	2022	0.43	2104	0.48	2178	0.54	2250	0.59	2321	0.65
1300	1508	1654	0.21	1739	0.26	1826	0.31	1913	0.37	2006	0.43	2101	0.49	2187	0.54	2263	0.60	2333	0.66	2400	0.72
1400	1624	1768	0.25	1847	0.30	1928	0.36	2008	0.42	2090	0.48	2178	0.54	2266	0.61	2347	0.67	2419	0.74	2485	0.80
1500	1740	1884	0.30	1957	0.35	2032	0.41	2107	0.47	2182	0.54	2260	0.61	2343	0.68	2424	0.75	2500	0.82	2569	0.88
1600	1856	2000	0.36	2069	0.41	2138	0.47	2208	0.54	2278	0.61	2349	0.68	2424	0.75	2501	0.82	2578	0.90	2649	0.97
1700	1972	2117	0.42	2181	0.48	2246	0.54	2312	0.61	2378	0.68	2444	0.75	2511	0.83	2582	0.91	2655	0.99	2727	1.06
1800	2088	2234	0.49	2294	0.55	2356	0.62	2418	0.69	2480	0.76	2542	0.84	2605	0.92	2669	1.00	2735	1.08	2804	1.16
1900	2204	2352	0.57	2409	0.63	2466	0.70	2525	0.78	2584	0.85	2643	0.93	2702	1.01	2761	1.09	2822	1.18	2885	1.27
2000	2320	2470	0.66	2524	0.73	2578	0.80	2634	0.87	2690	0.95	2746	1.03	2802	1.11	2857	1.20	2914	1.29	2971	1.38
2200	2552	2707	0.86	2756	0.93	2805	1.01	2854	1.09	2905	1.17	2955	1.26	3006	1.35	3057	1.44	3108	1.53	3159	1.63
2400	2784	2944	1.10	2989	1.18	3034	1.26	3079	1.35	3124	1.44	3171	1.53	3217	1.62	3263	1.72	3310	1.81	3356	1.92
2600	3016	3182	1.39	3224	1.47	3265	1.56	3306	1.65	3348	1.74	3390	1.84	3432	1.94	3475	2.04	3518	2.14	3561	2.25
2800	3248	3420	1.72	3460	1.81	3497	1.90	3536	2.00	3574	2.10	3613	2.20	3652	2.30	3691	2.40	3731	2.51	3770	2.62
3000	3480	3659	2.10	3696	2.20	3731	2.30	3767	2.40	3802	2.50	3838	2.60	3874	2.71	3911	2.82	3947	2.94	3984	3.05
3200	3712	3898	2.54	3933	2.64	3967	2.75	4000	2.85	4033	2.96	4066	3.07	4100	3.18	4133	3.29	4167	3.41	4202	3.53
3400	3945	4138	3.03	4170	3.14	4202	3.25	4233	3.36	4265	3.47	4296	3.59	4327	3.70	4359	3.83	4390	3.95	4422	4.07
3600	4177	4378	3.58	4408	3.70	4439	3.82	4468	3.93	4497	4.05	4527	4.17	4556	4.29	4585	4.42	4615	4.54	4645	4.67
Volume O.Vel		3"SP		3-1/2"SP		4"SP		4-1/2"SP		5"SP		5-1/2"SP		6"SP		6-1/2"SP		7"SP		7-1/2"SP	
CFM	FPM	RPM	BHP	RPM	BHP	RPM	BHP	RPM	BHP	RPM	BHP	RPM	BHP	RPM	BHP	RPM	BHP	RPM	BHP	RPM	BHP
900	1044	2365	0.61	2539	0.74	2701	0.87	2850	1.00	2986	1.12	3114	1.26								
1000	1160	2387	0.66	2558	0.79	2722	0.92	2875	1.06	3017	1.21	3150	1.35	3273	1.49	3393	1.64				
1100	1276	2422	0.71	2584	0.84	2742	0.98	2893	1.13	3038	1.28	3175	1.43	3306	1.59	3425	1.74	3541	1.90	3654	2.06
1200	1392	2469	0.77	2620	0.90	2770	1.04	2915	1.19	3057	1.35	3193	1.51	3325	1.67	3452	1.84	3570	2.01	3682	2.18
1300	1508	2532	0.84	2668	0.97	2808	1.11	2946	1.27	3082	1.42	3215	1.59	3344	1.76	3469	1.93	3591	2.11	3709	2.29
1400	1624	2608	0.92	2731	1.05	2858	1.19	2987	1.35	3117	1.51	3244	1.68	3369	1.85	3491	2.03	3610	2.21	3726	2.40
1500	1740	2692	1.01	2807	1.15	2921	1.29	3039	1.44	3159	1.60	3279	1.77	3399	1.94	3517	2.13	3633	2.31	3748	2.51
1600	1856	2777	1.11	2889	1.25	2997	1.39	3104	1.54	3214	1.70	3326	1.87	3440	2.05	3552	2.24	3663	2.43	3772	2.62
1700	1972	2860	1.22	2974	1.37	3079	1.52	3180	1.67	3281	1.83	3383	1.99	3488	2.17	3594	2.35	3700	2.55	3806	2.75
1800	2088	2939	1.33	3058	1.49	3164	1.65	3262	1.80	3357	1.96	3452	2.13	3548	2.30	3647	2.49	3747	2.68	3848	2.88
1900	2204	3016	1.44	3138	1.62	3249	1.79	3348	1.95	3440	2.12	3530	2.28	3619	2.46	3710	2.64	3803	2.83	3897	3.03
2000	2320	3094	1.56	3216	1.74	3330	1.93	3433	2.11	3526	2.28	3613	2.45	3698	2.63	3783	2.81	3869	3.00	3956	3.19
2200	2552	3262	1.82	3372	2.03	3485	2.23	3593	2.43	3692	2.63	3784	2.83	3867	3.01	3947	3.20	4025	3.39	4102	3.59
2400	2785	3449	2.12	3544	2.34	3643	2.55	3746	2.77	3848	2.99	3944	3.21	4034	3.43	4118	3.65	4194	3.85	4269	4.06
2600	3017	3647	2.46	3732	2.69	3819	2.92	3909	3.16	4003	3.39	4098	3.63	4191	3.86	4278	4.10	4361	4.34	4438	4.57
2800	3249	3850	2.85	3929	3.09	4008	3.33	4088	3.57	4170	3.82	4256	4.08	4344	4.33	4433	4.59	4517	4.84	4598	5.10
3000	3481	4058	3.29	4132	3.53	4206	3.78	4279	4.04	4353	4.30	4429	4.57	4507	4.85	4588	5.11	4670	5.39	4753	5.66
3200	3713	4270	3.78	4339	4.03	4408	4.29	4478	4.56	4546	4.83	4615	5.11	4685	5.40	4757	5.68	4831	5.97		
3400	3945	4486	4.33	4551	4.59	4615	4.86	4680	5.14	4745	5.42	4809	5.71								
3600	4177	4705	4.94	4765	5.21	4826	5.49														
Volume O.Vel		8"SP		8-1/2"SP		9"SP		9-1/2"SP		10"SP		10-1/2"SP		11"SP		11-1/2"SP		12"SP		13"SP	
CFM	FPM	RPM	BHP	RPM	BHP	RPM	BHP	RPM	BHP	RPM	BHP	RPM	BHP	RPM	BHP	RPM	BHP	RPM	BHP	RPM	BHP
1500	1740	3858	2.70	3967	2.90	4075	3.11	4176	3.31	4279	3.53	4372	3.73	4469	3.95	4557	4.15	4645	4.36	4814	4.79
1600	1856	3881	2.82	3989	3.03	4092	3.23	4196	3.45	4295	3.66	4394	3.88	4488	4.10	4583	4.33	4671	4.55	4844	5.00
1700	1972	3911	2.95	4013	3.16	4116	3.37	4217	3.59	4314	3.80	4413	4.03	4507	4.25	4602	4.49	4692	4.72		
1800	2088	3947	3.08	4046	3.29	4146	3.51	4242	3.73	4339	3.96	4433	4.18	4528	4.41	4619	4.65	4711	4.89		
1900	2204	3991	3.23	4087	3.45	4181	3.66	4274	3.89	4369	4.12	4460	4.34	4553	4.59	4641	4.82	4733	5.07		
2000	2320	4044	3.40	4135	3.61	4224	3.83	4314	4.05	4404	4.28	4493	4.52	4582	4.76	4669	5.00	4757	5.25		
2100	2436	4107	3.58	4191	3.79	4275	4.01	4361	4.23	4447	4.46	4532	4.70	4618	4.94	4702	5.19	4787	5.44		
2200	2552	4179	3.79	4258	4.00	4336	4.21	4416	4.43	4497	4.66	4579	4.90	4660	5.14	4742	5.39	4823	5.64		
2300	2668	4258	4.02	4332	4.22	4405	4.44	4480	4.66	4556	4.88	4632	5.12	4710	5.36	4788	5.60				
2400	2784	4341	4.26	4411	4.47	4482	4.69	4552	4.90	4624	5.13	4695	5.36	4768	5.60	4841	5.84				

Wheel Diameter = 13.50 in.

Outlet Area = 1.05 sq. ft. inside

Maximum BHP = .088 x (RPM/1000)³

Tip Speed, fpm = 3.53 x RPM

Size

1350 SISW

Class I RPM 3644

Class II RPM 4446

Design 7610 Centrifugal Airfoil Fans

Volume O.Vel		1/4"SP		1/2"SP		3/4"SP		1"SP		1-1/4"SP		1-1/2"SP		1-3/4"SP		2"SP		2-1/4"SP		2-1/2"SP		
CFM	FPM	RPM	BHP	RPM	BHP	RPM	BHP	RPM	BHP	RPM	BHP	RPM	BHP	RPM	BHP	RPM	BHP	RPM	BHP	RPM	BHP	
500	477	677	0.03	857	0.05																	
600	572	737	0.03	902	0.06	1045	0.09															
700	668	805	0.04	953	0.07	1088	0.11	1209	0.15	1324	0.18											
800	763	878	0.06	1011	0.09	1137	0.13	1252	0.16	1358	0.21	1460	0.25									
900	858	953	0.07	1076	0.11	1191	0.15	1301	0.19	1402	0.23	1497	0.28	1589	0.33							
1000	954	1031	0.09	1146	0.13	1251	0.17	1353	0.21	1451	0.26	1543	0.31	1629	0.36	1712	0.41	1795	0.47	1874	0.52	
1100	1049	1111	0.11	1218	0.15	1316	0.20	1410	0.24	1502	0.29	1592	0.34	1675	0.40	1755	0.45	1832	0.51	1907	0.57	
1200	1145	1192	0.13	1292	0.18	1385	0.23	1473	0.28	1559	0.33	1643	0.38	1725	0.44	1803	0.50	1877	0.55	1948	0.62	
1300	1240	1274	0.16	1369	0.21	1457	0.26	1540	0.32	1620	0.37	1699	0.42	1776	0.48	1852	0.54	1925	0.60	1995	0.67	
1400	1335	1357	0.19	1447	0.25	1531	0.30	1610	0.36	1685	0.41	1759	0.47	1832	0.53	1904	0.60	1975	0.66	2043	0.73	
1500	1431	1440	0.23	1526	0.29	1606	0.35	1681	0.41	1753	0.47	1824	0.53	1892	0.59	1960	0.65	2028	0.72	2094	0.79	
1600	1526	1525	0.27	1606	0.33	1682	0.39	1755	0.46	1824	0.52	1891	0.59	1956	0.65	2020	0.72	2084	0.78	2147	0.86	
1700	1622	1610	0.31	1687	0.38	1760	0.45	1829	0.51	1896	0.58	1960	0.65	2023	0.72	2084	0.79	2144	0.86	2204	0.93	
1800	1717	1695	0.37	1769	0.43	1839	0.50	1906	0.58	1970	0.65	2031	0.72	2091	0.79	2150	0.86	2208	0.93	2265	1.01	
1900	1812	1781	0.42	1852	0.49	1919	0.57	1983	0.64	2044	0.72	2104	0.79	2162	0.87	2219	0.94	2274	1.02	2329	1.10	
2000	1908	1868	0.48	1935	0.56	2000	0.64	2061	0.71	2121	0.79	2178	0.87	2234	0.95	2289	1.03	2342	1.11	2395	1.19	
2200	2099	2041	0.63	2103	0.71	2163	0.79	2220	0.88	2276	0.97	2330	1.05	2382	1.14	2433	1.23	2483	1.31	2533	1.40	
2400	2289	2215	0.80	2273	0.89	2329	0.98	2382	1.07	2434	1.16	2485	1.26	2534	1.35	2582	1.45	2630	1.54	2676	1.64	
2600	2480	2390	1.00	2444	1.09	2496	1.19	2546	1.29	2596	1.39	2643	1.49	2689	1.59	2735	1.70	2780	1.80	2824	1.90	
2800	2671	2566	1.23	2617	1.33	2665	1.44	2712	1.54	2758	1.65	2804	1.76	2848	1.87	2891	1.98	2933	2.09	2975	2.20	
3000	2862	2742	1.50	2789	1.61	2835	1.72	2880	1.83	2924	1.95	2966	2.06	3008	2.18	3049	2.29	3089	2.41	3129	2.53	
3200	3052	2918	1.80	2963	1.92	3007	2.03	3049	2.15	3090	2.27	3131	2.40	3170	2.52	3209	2.64	3248	2.77	3286	2.89	
3400	3243	3095	2.15	3137	2.27	3179	2.39	3219	2.52	3258	2.64	3297	2.77	3334	2.90	3372	3.04	3408	3.17	3445	3.30	
3600	3434	3272	2.53	3312	2.66	3352	2.79	3390	2.92	3428	3.06	3464	3.19	3500	3.33	3536	3.47	3571	3.61	3605	3.75	
3800	3625	3449	2.96	3488	3.10	3525	3.24	3562	3.37	3597	3.51	3633	3.66	3667	3.80	3701	3.95	3734	4.09	3768	4.24	
4000	3816	3627	3.44	3664	3.59	3699	3.73	3735	3.87	3768	4.02	3802	4.17	3835	4.32	3867	4.47	3900	4.62	3931	4.77	
4200	4006	3804	3.97	3840	4.12	3874	4.27	3908	4.42	3940	4.57	3972	4.73	4004	4.88	4035	5.04	4066	5.20	4097	5.36	
4400	4197	3982	4.55	4016	4.71	4049	4.86	4081	5.02	4113	5.18	4143	5.34	4174	5.50	4204	5.67	4233	5.83	4263	6.00	
Volume O.Vel		3"SP		3-1/2"SP		4"SP		4-1/2"SP		5"SP		5-1/2"SP		6"SP		6-1/2"SP		7"SP		7-1/2"SP		
CFM	FPM	RPM	BHP	RPM	BHP	RPM	BHP	RPM	BHP	RPM	BHP	RPM	BHP	RPM	BHP	RPM	BHP	RPM	BHP	RPM	BHP	
1100	1049	2055	0.69																			
1200	1145	2087	0.74	2222	0.88																	
1300	1240	2127	0.80	2255	0.94	2380	1.08															
1400	1335	2173	0.86	2295	1.01	2414	1.16	2530	1.31	2643	1.47											
1500	1431	2221	0.93	2340	1.08	2454	1.23	2565	1.39	2675	1.56	2782	1.73									
1600	1526	2271	1.00	2389	1.16	2500	1.31	2606	1.48	2710	1.65	2813	1.82	2914	2.00	3012	2.18					
1700	1622	2323	1.08	2438	1.24	2548	1.40	2652	1.57	2752	1.74	2851	1.92	2948	2.11	3044	2.29	3138	2.48	3229	2.67	
1800	1717	2378	1.17	2489	1.33	2597	1.50	2700	1.67	2799	1.85	2894	2.03	2988	2.22	3079	2.41	3169	2.60	3259	2.80	
1900	1812	2437	1.26	2543	1.42	2648	1.60	2749	1.77	2847	1.96	2941	2.14	3032	2.34	3120	2.53	3206	2.73	3293	2.94	
2000	1908	2498	1.36	2600	1.53	2701	1.70	2800	1.89	2896	2.07	2989	2.26	3079	2.46	3164	2.66	3248	2.87	3332	3.08	
2200	2099	2629	1.58	2723	1.76	2816	1.94	2907	2.13	2998	2.33	3087	2.53	3175	2.74	3260	2.94	3341	3.16	3421	3.38	
2400	2289	2767	1.83	2854	2.02	2940	2.21	3025	2.41	3110	2.61	3194	2.82	3277	3.04	3359	3.26	3439	3.48	3517	3.71	
2600	2480	2910	2.11	2993	2.31	3074	2.52	3154	2.73	3233	2.94	3311	3.16	3388	3.38	3465	3.61	3542	3.84	3618	4.08	
2800	2671	3057	2.42	3136	2.64	3213	2.86	3289	3.08	3362	3.31	3435	3.53	3508	3.76	3581	4.00	3653	4.24	3724	4.48	
3000	2862	3207	2.76	3282	3.00	3356	3.24	3428	3.47	3498	3.71	3568	3.95	3637	4.19	3705	4.43	3772	4.68	3839	4.93	
3200	3052	3359	3.14	3432	3.40	3502	3.65	3571	3.90	3638	4.15	3705	4.40	3771	4.66	3835	4.91	3899	5.17	3963	5.43	
3400	3243	3515	3.56	3584	3.83	3651	4.10	3718	4.37	3782	4.63	3846	4.90	3909	5.17	3971	5.43	4032	5.70	4093	5.98	
3600	3434	3673	4.03	3739	4.31	3804	4.59	3867	4.87	3930	5.16	3990	5.43	4051	5.72	4111	6.00	4169	6.28	4228	6.57	
3800	3625	3832	4.53	3896	4.82	3959	5.12	4019	5.42	4079	5.71	4138	6.02	4195	6.31	4253	6.61	4309	6.90	4365	7.20	
4000	3816	3994	5.08	4055	5.39	4114	5.70	4173	6.01	4231	6.32	4287	6.64	4344	6.95	4398	7.26					
4200	4006	4156	5.68	4215	6.00	4273	6.33	4329	6.65	4385	6.98	4439	7.31									
4400	4197	4320	6.33	4378	6.68	4432	7.01															
Volume O.Vel		8"SP		8-1/2"SP		9"SP		9-1/2"SP		10"SP		10-1/2"SP		11"SP		11-1/2"SP		12"SP		13"SP		
CFM	FPM	RPM	BHP	RPM	BHP	RPM	BHP	RPM	BHP	RPM	BHP	RPM	BHP	RPM	BHP	RPM	BHP	RPM	BHP	RPM	BHP	
1800	1717	3349	3.01	3436	3.21																	
1900	1812	3380	3.15	3463	3.36	3548	3.57	3630	3.79													
2000	1908	3415	3.29	3496	3.51	3578	3.73	3657	3.95	3737	4.18											
2200	2099	3500	3.60	3575	3.82	3651	4.06	3726	4.29	3800	4.53	3874	4.77	3947	5.01	4020	5.25	4093	5.50			
2400	2289	3593	3.94	3668	4.18	3739	4.41	3812	4.66	3881	4.90	3951	5.16	4019	5.40	4088	5.66	4155	5.92	4290	6.45	
2600	2480	3691	4.32	3764	4.56	3836	4.81	3905	5.06	3974	5.32	4040	5.57	4106	5.83	4170	6.10	4234	6.37	4361	6.91	
2800	2671	3795	4.74	3865	4.99	3934	5.24	4003	5.50	4069	5.76	4136	6.03	4200	6.30	4263	6.57	4325	6.85			
3000	2862	3906	5.19	3973	5.45	4040	5.72	4104	5.99	4171	6.26	42										

Wheel Diameter = 15.00 in.
 Outlet Area = 1.29 sq. ft. inside
 Maximum BHP = .148 x (RPM/1000)³
 Tip Speed, fpm = 3.93 x RPM

Size

1500 sisw

Class I RPM 3267
 Class II RPM 3986

Design 7610 Centrifugal Airfoil Fans

Volume O.Vel		1/4"SP		1/2"SP		3/4"SP		1"SP		1-1/4"SP		1-1/2"SP		1-3/4"SP		2"SP		2-1/4"SP		2-1/2"SP	
CFM	FPM	RPM	BHP	RPM	BHP	RPM	BHP	RPM	BHP	RPM	BHP	RPM	BHP	RPM	BHP	RPM	BHP	RPM	BHP	RPM	BHP
600	464	602	0.03	766	0.06																
700	541	644	0.04	797	0.07	930	0.11														
800	618	692	0.05	833	0.08	957	0.12	1072	0.17												
900	695	743	0.06	872	0.10	991	0.14	1098	0.19	1199	0.23										
1000	773	797	0.07	916	0.11	1028	0.16	1131	0.21	1226	0.26	1317	0.31								
1100	850	852	0.09	963	0.13	1067	0.18	1167	0.23	1258	0.28	1344	0.34	1427	0.40	1508	0.46				
1200	927	908	0.10	1013	0.15	1110	0.20	1204	0.25	1293	0.31	1376	0.37	1455	0.43	1531	0.50	1607	0.56	1680	0.63
1400	1082	1024	0.15	1119	0.20	1206	0.26	1288	0.31	1369	0.37	1447	0.44	1523	0.51	1594	0.58	1662	0.65	1728	0.72
1600	1236	1143	0.20	1229	0.26	1309	0.32	1384	0.39	1456	0.45	1527	0.52	1597	0.59	1665	0.67	1731	0.74	1794	0.82
1800	1391	1265	0.26	1343	0.33	1416	0.40	1486	0.48	1552	0.55	1616	0.62	1680	0.70	1742	0.78	1804	0.86	1865	0.94
2000	1545	1388	0.34	1460	0.42	1528	0.50	1593	0.58	1654	0.66	1714	0.74	1772	0.82	1829	0.90	1886	0.99	1942	1.07
2200	1700	1512	0.44	1579	0.52	1642	0.61	1703	0.70	1761	0.78	1816	0.87	1871	0.96	1924	1.05	1977	1.14	2028	1.23
2400	1854	1637	0.55	1700	0.64	1759	0.74	1816	0.83	1870	0.93	1923	1.02	1974	1.12	2024	1.21	2074	1.31	2122	1.41
2600	2009	1763	0.69	1822	0.78	1877	0.88	1931	0.99	1982	1.09	2032	1.19	2081	1.29	2128	1.40	2175	1.50	2220	1.60
2800	2163	1890	0.84	1945	0.95	1997	1.05	2048	1.16	2096	1.27	2144	1.38	2190	1.49	2235	1.60	2279	1.71	2323	1.82
3000	2318	2017	1.02	2069	1.13	2118	1.24	2166	1.36	2212	1.48	2257	1.59	2301	1.71	2345	1.83	2387	1.95	2428	2.07
3200	2472	2145	1.22	2193	1.34	2240	1.46	2286	1.58	2330	1.71	2373	1.83	2415	1.96	2456	2.08	2496	2.21	2536	2.33
3400	2627	2273	1.45	2319	1.57	2364	1.70	2407	1.83	2449	1.96	2490	2.09	2530	2.23	2569	2.36	2608	2.49	2646	2.63
3600	2782	2401	1.71	2445	1.84	2487	1.97	2528	2.10	2569	2.24	2608	2.38	2646	2.52	2684	2.66	2721	2.80	2757	2.94
3800	2936	2529	1.99	2571	2.13	2612	2.27	2651	2.41	2690	2.55	2727	2.70	2764	2.85	2800	2.99	2836	3.14	2871	3.29
4000	3091	2658	2.31	2698	2.45	2737	2.60	2775	2.74	2811	2.89	2848	3.03	2883	3.20	2918	3.36	2952	3.51	2986	3.67
4200	3245	2787	2.66	2825	2.80	2863	2.96	2898	3.11	2934	3.27	2969	3.43	3003	3.59	3036	3.75	3069	3.91	3102	4.08
4400	3400	2916	3.04	2953	3.19	2989	3.35	3023	3.51	3057	3.68	3090	3.84	3124	4.01	3155	4.18	3188	4.35	3218	4.52
4600	3554	3045	3.46	3081	3.62	3115	3.78	3148	3.95	3181	4.12	3213	4.29	3244	4.47	3276	4.65	3306	4.82	3337	5.00
4800	3709	3174	3.91	3209	4.08	3242	4.25	3274	4.43	3305	4.60	3337	4.79	3367	4.96	3397	5.15	3426	5.33	3455	5.51
5000	3863	3304	4.41	3337	4.59	3369	4.76	3400	4.94	3430	5.12	3460	5.31	3490	5.50	3518	5.69	3547	5.88	3575	6.07
5200	4018	3434	4.94	3465	5.13	3496	5.31	3526	5.50	3556	5.69	3584	5.88	3613	6.07	3641	6.27	3668	6.46	3696	6.67
5400	4172	3563	5.52	3594	5.71	3624	5.90	3653	6.10	3682	6.29	3709	6.49	3736	6.69	3764	6.89	3790	7.09	3817	7.30
Volume O.Vel		3"SP		3-1/2"SP		4"SP		4-1/2"SP		5"SP		5-1/2"SP		6"SP		6-1/2"SP		7"SP		7-1/2"SP	
CFM	FPM	RPM	BHP	RPM	BHP	RPM	BHP	RPM	BHP	RPM	BHP	RPM	BHP	RPM	BHP	RPM	BHP	RPM	BHP	RPM	BHP
1400	1082	1858	0.88																		
1600	1236	1913	0.99	2028	1.16	2141	1.34														
1800	1391	1981	1.11	2089	1.29	2193	1.48	2294	1.68	2394	1.87	2492	2.08								
2000	1545	2053	1.26	2159	1.45	2259	1.64	2354	1.85	2447	2.06	2538	2.27	2629	2.49	2717	2.72				
2200	1700	2131	1.42	2232	1.62	2329	1.82	2422	2.04	2511	2.25	2597	2.48	2682	2.71	2765	2.95	2848	3.19	2928	3.43
2400	1854	2217	1.60	2311	1.81	2403	2.03	2494	2.25	2581	2.48	2665	2.71	2746	2.95	2825	3.19	2903	3.45	2979	3.70
2600	2009	2310	1.81	2397	2.03	2484	2.25	2570	2.48	2654	2.72	2737	2.96	2816	3.21	2893	3.47	2967	3.72	3040	3.99
2800	2163	2408	2.05	2490	2.27	2571	2.50	2652	2.74	2731	2.99	2810	3.24	2887	3.50	2963	3.76	3038	4.03	3108	4.30
3000	2318	2509	2.31	2587	2.54	2664	2.78	2740	3.03	2815	3.29	2890	3.55	2964	3.82	3037	4.09	3108	4.36	3178	4.64
3200	2472	2613	2.59	2688	2.84	2762	3.09	2834	3.35	2905	3.61	2975	3.88	3045	4.16	3115	4.44	3184	4.72	3252	5.02
3400	2627	2720	2.89	2792	3.16	2862	3.43	2931	3.70	2999	3.98	3066	4.25	3132	4.53	3198	4.82	3264	5.12	3329	5.42
3600	2782	2828	3.23	2898	3.51	2965	3.79	3032	4.08	3097	4.37	3161	4.65	3224	4.94	3286	5.24	3349	5.55	3411	5.85
3800	2936	2939	3.59	3006	3.89	3071	4.19	3135	4.49	3197	4.79	3259	5.09	3319	5.39	3379	5.69	3439	6.01	3498	6.32
4000	3091	3052	3.98	3116	4.30	3179	4.61	3240	4.93	3300	5.24	3360	5.55	3418	5.87	3476	6.19	3533	6.51	3589	6.83
4200	3245	3165	4.40	3227	4.73	3288	5.06	3347	5.40	3406	5.72	3463	6.05	3519	6.39	3575	6.71	3630	7.05	3685	7.38
4400	3400	3280	4.86	3340	5.21	3399	5.55	3456	5.89	3512	6.24	3568	6.59	3622	6.93	3677	7.28	3729	7.62	3782	7.97
4600	3554	3396	5.36	3454	5.71	3511	6.07	3567	6.44	3621	6.79	3675	7.15	3728	7.51	3780	7.87	3832	8.24	3882	8.59
4800	3709	3513	5.88	3569	6.26	3624	6.63	3678	7.00	3731	7.38	3783	7.75	3834	8.13	3885	8.51	3935	8.88	3985	9.26
5000	3863	3631	6.46	3685	6.84	3738	7.22	3791	7.62	3842	8.00	3893	8.40	3943	8.79						
5200	4018	3750	7.06	3802	7.46	3855	7.87	3905	8.26	3955	8.67										
5400	4172	3869	7.71	3921	8.13	3970	8.54														
Volume O.Vel		8"SP		8-1/2"SP		9"SP		9-1/2"SP		10"SP		10-1/2"SP		11"SP		11-1/2"SP		12"SP		13"SP	
CFM	FPM	RPM	BHP	RPM	BHP	RPM	BHP	RPM	BHP	RPM	BHP	RPM	BHP	RPM	BHP	RPM	BHP	RPM	BHP	RPM	BHP
2200	1700	3009	3.68																		
2400	1854	3054	3.96																		
2600	2009	3112	4.26	3130	4.23	3203	4.49	3277	4.76	3348	5.04										
2800	2163	3177	4.58	3182	4.53	3253	4.82	3322	5.09	3392	5.38	3459	5.67	3528	5.96	3593	6.25				
3000	2318	3248	4.94	3246	4.87	3312	5.15	3378	5.45	3443	5.74	3509	6.05	3572	6.34	3638	6.66	3700	6.96	3826	7.59
				3313	5.22	3379	5.52	3442	5.82	3505	6.13	3567	6.44	3628	6.75	3689	7.07	3750	7.39	3870	8.04
3200	2472	3318	5.31	3384	5.61	3449	5.92	3511	6.22	3573	6.54	3632	6.85	3692	7.18	3750	7.50	3808	7.84	3922	8.51
3400	2627	3393	5.72	3458	6.04	3520	6.34	3582	6.66	3642	6.98	3702	7.31	3760	7.64	3818	7.98	3873	8.31	3983	9.00
3600	2782	3473	6.16	3534	6.49	3595	6.81	3656	7.14	3714	7.46	3774	7.81	3830	8.14	3888	8.49	3942	8.83		
3800	2936	3557	6.64	3616	6.97	3673	7.30	3732	7.64	3789	7.98	3847	8.33	3902	8.67	3958	9.03				
4000	3091	3645	7.16	3702	7.50	3757															

Wheel Diameter = 16.50 in.
 Outlet Area = 1.56 sq. ft. inside
 Maximum BHP = .239 x (RPM/1000)³
 Tip Speed, fpm = 4.32 x RPM

Size

1650 SISW

Design 7610 Centrifugal Airfoil Fans

Class I RPM 2969
 Class II RPM 3623

Volume O.Vel		1/4"SP		1/2"SP		3/4"SP		1"SP		1-1/4"SP		1-1/2"SP		1-3/4"SP		2"SP		2-1/4"SP		2-1/2"SP	
CFM	FPM	RPM	BHP	RPM	BHP	RPM	BHP	RPM	BHP	RPM	BHP	RPM	BHP	RPM	BHP	RPM	BHP	RPM	BHP	RPM	BHP
600	383	513	0.03																		
800	511	570	0.04	713	0.08	838	0.13														
1000	639	641	0.06	767	0.11	879	0.15	980	0.21												
1200	766	720	0.09	829	0.13	931	0.19	1026	0.25	1112	0.31	1195	0.38								
1400	894	803	0.12	901	0.17	992	0.23	1080	0.29	1162	0.36	1238	0.43	1311	0.51	1383	0.58	1452	0.66		
1600	1022	890	0.15	979	0.22	1061	0.28	1140	0.35	1217	0.42	1290	0.50	1360	0.58	1425	0.66	1489	0.74	1552	0.83
1800	1149	978	0.20	1060	0.27	1136	0.34	1208	0.42	1278	0.49	1346	0.57	1413	0.66	1477	0.74	1537	0.83	1596	0.92
2000	1277	1069	0.26	1145	0.34	1215	0.42	1282	0.50	1346	0.58	1409	0.66	1471	0.75	1532	0.84	1591	0.93	1647	1.03
2200	1405	1160	0.33	1231	0.41	1297	0.50	1359	0.59	1419	0.67	1477	0.76	1534	0.86	1591	0.95	1647	1.05	1701	1.15
2400	1533	1252	0.41	1319	0.50	1381	0.59	1440	0.69	1496	0.78	1551	0.88	1604	0.98	1656	1.08	1708	1.18	1760	1.28
2600	1660	1345	0.50	1408	0.60	1466	0.70	1522	0.80	1575	0.91	1627	1.01	1678	1.11	1727	1.22	1775	1.33	1824	1.44
2800	1788	1439	0.61	1498	0.71	1553	0.82	1606	0.93	1657	1.04	1706	1.16	1754	1.27	1801	1.38	1847	1.49	1892	1.60
3000	1916	1534	0.73	1589	0.84	1642	0.96	1692	1.08	1740	1.20	1787	1.31	1833	1.43	1877	1.55	1921	1.67	1964	1.79
3200	2043	1629	0.87	1681	0.99	1731	1.11	1779	1.24	1825	1.36	1870	1.49	1914	1.62	1956	1.74	1998	1.87	2039	2.00
3400	2171	1724	1.03	1774	1.16	1821	1.29	1867	1.42	1911	1.55	1954	1.68	1996	1.82	2037	1.95	2077	2.09	2116	2.22
3600	2299	1819	1.21	1867	1.34	1912	1.47	1956	1.61	1998	1.75	2039	1.89	2079	2.04	2119	2.18	2158	2.32	2195	2.46
3800	2426	1915	1.40	1960	1.54	2004	1.68	2045	1.83	2086	1.98	2126	2.13	2165	2.28	2202	2.42	2239	2.57	2276	2.73
4000	2554	2011	1.62	2054	1.77	2096	1.92	2136	2.07	2175	2.22	2213	2.38	2250	2.53	2287	2.69	2323	2.85	2358	3.01
4200	2682	2108	1.86	2149	2.01	2189	2.17	2227	2.33	2265	2.49	2302	2.65	2338	2.82	2373	2.98	2407	3.15	2441	3.31
4400	2810	2204	2.13	2244	2.28	2282	2.44	2319	2.61	2355	2.78	2391	2.95	2425	3.12	2459	3.29	2493	3.46	2525	3.64
4600	2937	2300	2.41	2339	2.58	2375	2.74	2411	2.92	2446	3.09	2480	3.27	2514	3.45	2547	3.63	2579	3.81	2611	3.99
4800	3065	2397	2.73	2434	2.90	2469	3.07	2504	3.25	2537	3.43	2571	3.62	2603	3.80	2635	3.99	2666	4.17	2697	4.36
5000	3193	2494	3.07	2529	3.24	2564	3.43	2597	3.61	2629	3.80	2661	3.99	2693	4.18	2724	4.38	2754	4.57	2784	4.76
5400	3448	2688	3.83	2721	4.02	2753	4.22	2784	4.41	2815	4.62	2844	4.82	2874	5.02	2903	5.23	2931	5.44	2960	5.65
5800	3704	2882	4.71	2913	4.92	2943	5.13	2973	5.34	3001	5.55	3030	5.77	3057	5.98	3084	6.21	3111	6.43	3138	6.65
6200	3959	3077	5.73	3106	5.95	3134	6.17	3162	6.39	3189	6.62	3215	6.84	3242	7.08	3267	7.31	3293	7.55	3318	7.78
6600	4214	3271	6.88	3299	7.11	3326	7.35	3352	7.58	3378	7.83	3403	8.06	3428	8.31	3452	8.55	3476	8.80	3500	9.05
Volume O.Vel		3"SP		3-1/2"SP		4"SP		4-1/2"SP		5"SP		5-1/2"SP		6"SP		6-1/2"SP		7"SP		7-1/2"SP	
CFM	FPM	RPM	BHP	RPM	BHP	RPM	BHP	RPM	BHP	RPM	BHP	RPM	BHP	RPM	BHP	RPM	BHP	RPM	BHP	RPM	BHP
1600	1022	1674	1.01																		
1800	1149	1709	1.12	1819	1.32																
2000	1277	1755	1.23	1857	1.44	1958	1.66	2056	1.89												
2200	1405	1807	1.36	1904	1.58	1999	1.81	2090	2.05	2181	2.29	2269	2.54								
2400	1533	1860	1.50	1957	1.73	2048	1.97	2135	2.22	2220	2.47	2303	2.73	2386	2.99	2467	3.27				
2600	1660	1918	1.66	2011	1.90	2101	2.15	2186	2.40	2268	2.67	2347	2.94	2424	3.21	2501	3.49	2577	3.78	2653	4.08
2800	1788	1981	1.84	2069	2.09	2155	2.34	2239	2.61	2319	2.88	2396	3.15	2470	3.44	2544	3.74	2616	4.04	2687	4.34
3000	1916	2048	2.04	2131	2.29	2213	2.56	2294	2.83	2373	3.11	2449	3.40	2522	3.69	2592	3.99	2661	4.30	2729	4.62
3200	2043	2119	2.26	2198	2.52	2275	2.79	2352	3.07	2428	3.36	2502	3.66	2574	3.96	2644	4.27	2712	4.59	2777	4.91
3400	2171	2193	2.49	2268	2.77	2341	3.05	2414	3.33	2487	3.63	2558	3.94	2628	4.25	2697	4.57	2765	4.90	2828	5.22
3600	2299	2269	2.75	2341	3.03	2411	3.33	2480	3.62	2549	3.93	2618	4.24	2686	4.57	2753	4.90	2818	5.23	2881	5.57
3800	2426	2347	3.03	2416	3.33	2484	3.63	2550	3.94	2616	4.25	2681	4.57	2746	4.90	2810	5.24	2873	5.58	2936	5.93
4000	2554	2426	3.32	2493	3.64	2559	3.96	2622	4.27	2685	4.60	2747	4.93	2809	5.27	2871	5.61	2932	5.96	2992	6.32
4200	2682	2508	3.64	2572	3.98	2636	4.31	2697	4.64	2757	4.97	2817	5.31	2876	5.66	2936	6.01	2994	6.37	3052	6.74
4400	2810	2590	3.98	2652	4.33	2713	4.68	2773	5.02	2832	5.37	2889	5.72	2946	6.08	3003	6.44	3059	6.81	3115	7.18
4600	2937	2673	4.35	2733	4.71	2792	5.07	2850	5.43	2907	5.80	2964	6.16	3018	6.53	3073	6.89	3127	7.28	3180	7.65
4800	3065	2757	4.74	2816	5.11	2874	5.49	2930	5.87	2985	6.25	3039	6.62	3093	7.01	3145	7.38	3197	7.77	3249	8.16
5000	3193	2842	5.15	2899	5.54	2955	5.94	3010	6.33	3064	6.73	3116	7.12	3168	7.51	3220	7.91	3269	8.30	3320	8.70
5400	3448	3015	6.07	3069	6.49	3121	6.91	3173	7.33	3224	7.76	3274	8.18	3323	8.60	3372	9.03	3419	9.45	3467	9.88
5800	3704	3190	7.10	3241	7.55	3291	8.00	3340	8.45	3389	8.91	3436	9.36	3483	9.81	3529	10.27	3574	10.72	3619	11.18
6200	3959	3368	8.26	3416	8.73			3510	9.70	3556	10.18	3602	10.67								
6600	4214	3547	9.55	3594	10.06	3464	9.22														
Volume O.Vel		8"SP		8-1/2"SP		9"SP		9-1/2"SP		10"SP		10-1/2"SP		11"SP		11-1/2"SP		12"SP		13"SP	
CFM	FPM	RPM	BHP	RPM	BHP	RPM	BHP	RPM	BHP	RPM	BHP	RPM	BHP	RPM	BHP	RPM	BHP	RPM	BHP	RPM	BHP
2800	1788	2758	4.65	2828	4.96	2896	5.27														
3000	1916	2796	4.94	2862	5.26	2930	5.59	2994	5.92	3060	6.26	3123	6.59								
3200	2043	2841	5.24	2905	5.58	2968	5.91	3031	6.26	3093	6.61	3154	6.96	3215	7.31	3276	7.67	3335	8.04		
3400	2171	2891	5.56	2954	5.91	3013	6.25	3074	6.62	3133	6.97	3193	7.34	3250	7.70	3309	8.08	3366	8.44	3480	9.21
3600	2299	2944	5.91	3005	6.26	3064	6.62	3122	6.99	3179	7.35	3236	7.73	3291	8.10	3348	8.49	3403	8.87	3513	9.67
3800	2427	2998	6.29	3057	6.65	3116	7.01	3173	7.38	3229	7.76	3284	8.14	3338	8.53	3392	8.92	3446	9.32	3552	10.13
4000	2554	3053	6.69	3111	7.05	3169	7.43	3226	7.81	3281	8.19	3336	8.58	3389	8.98	3441	9.38	3493	9.79	3595	10.62
4200	2682	3111	7.11	3167	7.49	3224	7.87	3280	8.26	3334	8.65	3388	9.05	3441	9.45	3492	9.86	3544	10.28		
4400	2810	3171	7.56	3226	7.95	3281	8.34	3335	8.74	3389	9.14	3442	9.55	3494	9.96	3545	10.38	3595	10.80		
4600	2937	3234	8.04	3288	8.44	3340	8.84	339													

Wheel Diameter = 18.25 in.
 Outlet Area = 1.91 sq. ft. inside
 Maximum BHP = $.394 \times (\text{RPM}/1000)^3$
 Tip Speed, fpm = $4.78 \times \text{RPM}$

Size

1825 sisw

Class I RPM 2657
 Class II RPM 3244

Design 7610 Centrifugal Airfoil Fans

Volume O.Vel		1/4"SP		1/2"SP		3/4"SP		1"SP		1-1/4"SP		1-1/2"SP		1-3/4"SP		2"SP		2-1/4"SP		2-1/2"SP	
CFM	FPM	RPM	BHP	RPM	BHP	RPM	BHP	RPM	BHP	RPM	BHP	RPM	BHP	RPM	BHP	RPM	BHP	RPM	BHP	RPM	BHP
1000	523	510	0.05	640	0.10																
1200	627	560	0.07	679	0.12	780	0.18														
1400	732	614	0.09	719	0.15	818	0.21	902	0.28												
1600	836	670	0.12	766	0.18	856	0.25	941	0.32	1015	0.39	1087	0.47								
1800	941	728	0.15	819	0.22	899	0.29	979	0.37	1054	0.45	1121	0.53	1185	0.62						
2000	1045	788	0.18	874	0.26	949	0.34	1020	0.42	1092	0.51	1159	0.60	1221	0.69	1279	0.79	1337	0.88		
2200	1150	851	0.22	930	0.31	1002	0.40	1067	0.49	1133	0.58	1198	0.67	1260	0.77	1317	0.88	1371	0.98	1424	1.08
2400	1255	914	0.27	987	0.37	1057	0.47	1119	0.56	1178	0.65	1239	0.75	1298	0.86	1356	0.97	1410	1.08	1461	1.19
2600	1359	979	0.33	1046	0.43	1112	0.54	1173	0.64	1229	0.74	1284	0.85	1339	0.95	1395	1.07	1448	1.19	1499	1.30
2800	1464	1045	0.40	1106	0.50	1169	0.62	1228	0.73	1282	0.84	1333	0.95	1384	1.06	1436	1.18	1488	1.30	1538	1.43
3000	1568	1111	0.47	1168	0.58	1226	0.70	1284	0.83	1336	0.95	1386	1.06	1434	1.18	1481	1.30	1529	1.42	1577	1.55
3200	1673	1178	0.56	1231	0.67	1285	0.79	1340	0.93	1392	1.06	1440	1.19	1486	1.31	1531	1.44	1575	1.56	1620	1.70
3400	1777	1246	0.66	1295	0.77	1345	0.90	1397	1.04	1448	1.18	1495	1.32	1540	1.45	1583	1.59	1625	1.72	1667	1.85
3600	1882	1313	0.77	1360	0.89	1407	1.02	1456	1.16	1504	1.31	1551	1.46	1594	1.61	1636	1.75	1677	1.89	1716	2.03
3800	1986	1381	0.89	1425	1.01	1470	1.15	1515	1.30	1561	1.45	1607	1.61	1650	1.77	1691	1.92	1730	2.07	1768	2.21
4000	2091	1449	1.02	1491	1.15	1533	1.29	1576	1.44	1620	1.60	1663	1.77	1706	1.94	1746	2.10	1785	2.26	1822	2.41
4200	2195	1517	1.17	1557	1.31	1597	1.45	1638	1.60	1679	1.77	1721	1.94	1762	2.12	1802	2.29	1840	2.46	1876	2.63
4400	2300	1586	1.33	1624	1.47	1662	1.62	1700	1.78	1740	1.95	1779	2.12	1819	2.31	1858	2.49	1896	2.67	1932	2.85
4600	2404	1654	1.51	1691	1.66	1727	1.81	1764	1.97	1801	2.14	1839	2.32	1877	2.51	1915	2.70	1951	2.90	1987	3.08
4800	2509	1723	1.70	1758	1.85	1793	2.01	1828	2.18	1863	2.35	1899	2.54	1936	2.73	1972	2.93	2008	3.13	2043	3.33
5000	2614	1792	1.91	1826	2.07	1859	2.23	1893	2.40	1926	2.58	1960	2.77	1995	2.96	2030	3.17	2065	3.37	2099	3.58
5400	2823	1930	2.38	1961	2.55	1992	2.72	2023	2.90	2054	3.09	2085	3.28	2117	3.48	2149	3.70	2181	3.91	2214	4.14
5800	3032	2068	2.92	2098	3.10	2127	3.29	2155	3.48	2184	3.67	2213	3.87	2242	4.08	2271	4.30	2301	4.53	2331	4.76
6200	3241	2207	3.54	2235	3.73	2262	3.93	2288	4.13	2315	4.33	2342	4.54	2369	4.76	2396	4.98	2423	5.22	2451	5.46
6600	3450	2346	4.24	2372	4.45	2397	4.65	2423	4.87	2448	5.08	2473	5.30	2498	5.52	2523	5.76	2548	5.99	2574	6.24
7000	3659	2485	5.03	2510	5.25	2534	5.47	2558	5.69	2581	5.92	2605	6.15	2628	6.38	2652	6.62	2676	6.87	2699	7.12
7500	3920	2659	6.15	2682	6.39	2705	6.62	2727	6.86	2749	7.10	2771	7.34	2793	7.59	2815	7.84	2837	8.09	2859	8.36
8000	4182	2833	7.43	2855	7.68	2876	7.93	2897	8.18	2918	8.44	2938	8.69	2959	8.95	2979	9.22	3000	9.48	3020	9.75
Volume O.Vel		3"SP		3-1/2"SP		4"SP		4-1/2"SP		5"SP		5-1/2"SP		6"SP		6-1/2"SP		7"SP		7-1/2"SP	
CFM	FPM	RPM	BHP	RPM	BHP	RPM	BHP	RPM	BHP	RPM	BHP	RPM	BHP	RPM	BHP	RPM	BHP	RPM	BHP	RPM	BHP
2300	1202	1542	1.36	1645	1.60	1755	1.87														
2600	1359	1594	1.54	1683	1.79	1772	2.04	1864	2.33	1960	2.63	2058	2.96								
2800	1464	1633	1.68	1719	1.93	1802	2.20	1885	2.47	1969	2.77	2057	3.09	2147	3.43	2236	3.78				
3000	1568	1671	1.82	1759	2.10	1839	2.37	1916	2.65	1993	2.94	2070	3.25	2151	3.57	2234	3.92	2318	4.29		
3200	1673	1710	1.97	1797	2.26	1878	2.55	1953	2.84	2026	3.14	2098	3.45	2170	3.77	2244	4.11	2320	4.47	2398	4.84
3400	1777	1752	2.14	1835	2.43	1917	2.74	1993	3.05	2064	3.36	2133	3.68	2200	4.00	2267	4.33	2336	4.67	2406	5.04
3600	1882	1796	2.31	1876	2.62	1955	2.94	2031	3.27	2103	3.59	2171	3.92	2236	4.25	2299	4.58	2363	4.93	2427	5.29
3800	1986	1844	2.51	1919	2.82	1995	3.15	2069	3.49	2142	3.83	2210	4.17	2274	4.52	2336	4.86	2397	5.21	2458	5.58
4000	2091	1894	2.72	1965	3.04	2037	3.37	2109	3.72	2180	4.07	2248	4.43	2313	4.80	2375	5.16	2435	5.52	2494	5.89
4200	2195	1947	2.95	2014	3.28	2082	3.61	2151	3.96	2219	4.33	2286	4.70	2351	5.08	2413	5.46	2473	5.84	2532	6.23
4400	2300	2000	3.19	2066	3.53	2131	3.88	2195	4.23	2261	4.60	2326	4.99	2390	5.38	2452	5.77	2512	6.17	2570	6.57
4600	2404	2055	3.45	2119	3.81	2181	4.16	2243	4.52	2305	4.90	2367	5.29	2429	5.68	2490	6.09	2550	6.50	2608	6.92
4800	2509	2110	3.72	2172	4.09	2233	4.46	2292	4.83	2351	5.21	2411	5.60	2471	6.01	2530	6.43	2589	6.85	2646	7.28
5000	2614	2165	4.00	2227	4.39	2286	4.78	2344	5.16	2400	5.55	2457	5.95	2514	6.36	2572	6.78	2629	7.21	2685	7.65
5400	2823	2277	4.59	2338	5.03	2395	5.46	2450	5.88	2504	6.29	2557	6.71	2609	7.13	2661	7.56	2714	8.00	2767	8.46
5800	3032	2391	5.24	2449	5.72	2506	6.19	2559	6.66	2611	7.11	2662	7.56	2710	7.99	2759	8.44	2808	8.90	2856	9.36
6200	3241	2507	5.95	2563	6.47	2618	6.98	2670	7.49	2721	7.99	2770	8.47	2817	8.95	2863	9.42	2909	9.89	2954	10.37
6600	3450	2626	6.75	2679	7.29	2731	7.83	2782	8.38	2832	8.93	2880	9.46	2926	9.97	2971	10.48	3015	10.99	3058	11.49
7000	3659	2748	7.64	2797	8.19	2847	8.77	2896	9.34	2944	9.92	2991	10.51	3036	11.06	3080	11.62	3123	12.16	3165	12.69
7500	3920	2903	8.89	2948	9.46	2994	10.05	3040	10.66	3086	11.27	3131	11.90	3175	12.52	3219	13.13				
8000	4182	3062	10.31	3103	10.89	3145	11.49	3188	12.12	3231	12.77										
Volume O.Vel		8"SP		8-1/2"SP		9"SP		9-1/2"SP		10"SP		10-1/2"SP		11"SP		11-1/2"SP		12"SP		13"SP	
CFM	FPM	RPM	BHP	RPM	BHP	RPM	BHP	RPM	BHP	RPM	BHP	RPM	BHP	RPM	BHP	RPM	BHP	RPM	BHP	RPM	BHP
3800	1986	2517	5.94	2578	6.33	2640	6.73	2703	7.14	2769	7.58	2834	8.02	2901	8.49	2967	8.96				
4000	2091	2550	6.26	2607	6.64	2664	7.04	2722	7.44	2781	7.86	2841	8.30	2904	8.76	2965	9.22	3029	9.71	3155	10.72
4200	2195	2587	6.60	2642	6.99	2696	7.39	2750	7.79	2805	8.21	2860	8.63	2916	9.07	2973	9.52	3032	10.00	3151	10.99
4400	2300	2625	6.96	2679	7.36	2732	7.77	2784	8.17	2836	8.59	2887	9.01	2940	9.45	2992	9.89	3046	10.35	3155	11.32
4600	2404	2664	7.34	2717	7.75	2771	8.17	2821	8.58	2872	9.01	2920	9.43	2971	9.87	3019	10.31	3070	10.77	3170	11.71
4800	2509	2703	7.72	2756	8.14	2809	8.58	2859	9.01	2909	9.44	2957	9.88	3005	10.32	3052	10.76	3100	11.23	3195	12.16
5000	2614	2741	8.10	2795	8.55	2847	9.00	2897	9.46	2947	9.89	2996	10.36	3042	10.80	3089	11.26	3135	11.71	3226	12.66
5400	2823	2819	8.92	2872	9.39	2924	9.87	2974	10.35	3025	10.84	3072	11.32	3120	11.81	316					

Wheel Diameter = 20.00 in.
 Outlet Area = 2.29 sq. ft. inside
 Maximum BHP = .622 x (RPM/1000)³
 Tip Speed, fpm = 5.24 x RPM

Size

2000 SISW

Class I RPM 2430
 Class II RPM 2956

Design 7610 Centrifugal Airfoil Fans

Volume O.Vel		1/4"SP		1/2"SP		3/4"SP		1"SP		1-1/4"SP		1-1/2"SP		1-3/4"SP		2"SP		2-1/4"SP		2-1/2"SP	
CFM	FPM	RPM	BHP	RPM	BHP	RPM	BHP	RPM	BHP	RPM	BHP	RPM	BHP	RPM	BHP	RPM	BHP	RPM	BHP	RPM	BHP
1400	609	502	0.08	613	0.14	706	0.21														
1600	696	543	0.10	643	0.17	734	0.24	814	0.31												
1800	783	586	0.12	676	0.20	763	0.27	840	0.36	911	0.44										
2000	870	629	0.15	714	0.23	793	0.31	870	0.40	937	0.49	1001	0.59								
2200	958	673	0.18	755	0.27	827	0.36	899	0.45	967	0.55	1028	0.65	1086	0.76						
2400	1045	719	0.22	797	0.32	865	0.41	931	0.51	996	0.61	1058	0.72	1114	0.83	1167	0.94	1220	1.06		
2600	1132	766	0.26	840	0.36	905	0.47	966	0.57	1027	0.68	1087	0.79	1143	0.91	1196	1.03	1245	1.15	1294	1.28
2800	1219	814	0.31	883	0.42	947	0.53	1004	0.64	1061	0.75	1117	0.87	1173	1.00	1225	1.12	1274	1.25	1321	1.38
3000	1306	863	0.36	927	0.48	989	0.60	1045	0.72	1097	0.84	1150	0.96	1203	1.09	1254	1.22	1304	1.36	1350	1.49
3200	1393	913	0.42	972	0.54	1031	0.67	1086	0.80	1137	0.93	1186	1.05	1235	1.19	1284	1.32	1333	1.47	1380	1.61
3400	1480	963	0.49	1018	0.61	1075	0.75	1128	0.89	1177	1.03	1224	1.16	1270	1.29	1316	1.44	1363	1.58	1409	1.74
3600	1567	1013	0.57	1065	0.70	1118	0.84	1171	0.99	1219	1.14	1264	1.28	1308	1.41	1351	1.56	1395	1.71	1439	1.86
3800	1654	1064	0.65	1113	0.79	1163	0.93	1213	1.09	1261	1.25	1305	1.40	1347	1.55	1388	1.69	1430	1.85	1471	2.00
4000	1741	1115	0.75	1161	0.89	1209	1.04	1257	1.20	1303	1.37	1347	1.53	1388	1.69	1427	1.84	1467	2.00	1506	2.16
4200	1828	1166	0.85	1210	0.99	1255	1.15	1301	1.32	1346	1.49	1389	1.67	1429	1.83	1468	2.00	1505	2.16	1543	2.32
4400	1915	1218	0.97	1260	1.11	1302	1.27	1345	1.44	1389	1.63	1431	1.81	1471	1.99	1509	2.16	1546	2.33	1581	2.50
4600	2002	1269	1.09	1310	1.24	1350	1.40	1391	1.58	1433	1.77	1474	1.96	1513	2.15	1550	2.34	1586	2.52	1621	2.69
4800	2089	1321	1.23	1360	1.38	1398	1.55	1437	1.73	1477	1.92	1517	2.12	1556	2.32	1593	2.52	1628	2.71	1662	2.89
5000	2176	1373	1.37	1410	1.53	1447	1.71	1484	1.89	1522	2.09	1561	2.29	1598	2.50	1635	2.71	1670	2.91	1703	3.11
5400	2350	1477	1.70	1511	1.87	1545	2.05	1579	2.24	1614	2.45	1650	2.66	1685	2.89	1720	3.11	1755	3.34	1787	3.56
5800	2524	1582	2.08	1614	2.26	1645	2.46	1677	2.65	1709	2.86	1741	3.08	1774	3.32	1807	3.56	1840	3.80	1872	4.04
6200	2698	1686	2.51	1716	2.71	1746	2.91	1775	3.12	1805	3.34	1835	3.56	1865	3.80	1896	4.05	1927	4.31	1958	4.57
6600	2873	1791	3.00	1819	3.21	1847	3.42	1875	3.64	1903	3.87	1930	4.10	1959	4.35	1987	4.60	2016	4.87	2046	5.14
7000	3047	1896	3.55	1923	3.77	1949	4.00	1975	4.23	2001	4.46	2028	4.71	2054	4.96	2081	5.22	2108	5.49	2135	5.77
7500	3264	2028	4.34	2053	4.57	2078	4.81	2102	5.05	2126	5.30	2150	5.55	2175	5.82	2199	6.08	2224	6.36	2249	6.65
8000	3482	2160	5.23	2184	5.48	2207	5.73	2230	5.99	2252	6.25	2275	6.52	2297	6.79	2320	7.07	2343	7.35	2366	7.65
8500	3700	2292	6.24	2315	6.51	2336	6.77	2358	7.04	2379	7.31	2400	7.59	2422	7.88	2443	8.17	2464	8.46	2486	8.77
9000	3917	2424	7.37	2446	7.65	2466	7.93	2486	8.22	2507	8.51	2527	8.79	2547	9.09	2567	9.39	2587	9.70	2607	10.02
9500	4135	2556	8.63	2577	8.93	2597	9.23	2616	9.53	2635	9.83	2654	10.13	2673	10.44	2692	10.76	2710	11.07	2729	11.39
Volume O.Vel	3"SP		3-1/2"SP		4"SP		4-1/2"SP		5"SP		5-1/2"SP		6"SP		6-1/2"SP		7"SP		7-1/2"SP		
CFM	FPM	RPM	BHP	RPM	BHP	RPM	BHP	RPM	BHP	RPM	BHP	RPM	BHP	RPM	BHP	RPM	BHP	RPM	BHP	RPM	BHP
2800	1219	1411	1.65																		
3000	1306	1437	1.77	1521	2.06																
3200	1393	1466	1.91	1546	2.20	1625	2.51														
3400	1480	1495	2.04	1574	2.35	1649	2.67	1723	3.00												
3600	1567	1524	2.19	1604	2.52	1677	2.84	1748	3.18	1818	3.53	1889	3.90								
3800	1654	1554	2.34	1634	2.68	1707	3.03	1776	3.37	1843	3.73	1909	4.09	1976	4.48						
4000	1741	1585	2.50	1663	2.85	1736	3.21	1805	3.58	1871	3.94	1934	4.31	1997	4.70	2060	5.10				
4200	1828	1617	2.67	1693	3.03	1765	3.41	1835	3.79	1900	4.17	1962	4.55	2023	4.94	2082	5.34	2143	5.76		
4400	1915	1652	2.85	1724	3.22	1795	3.61	1864	4.00	1930	4.40	1992	4.80	2051	5.20	2109	5.61	2166	6.03	2223	6.45
4600	2002	1689	3.05	1757	3.43	1826	3.82	1893	4.22	1959	4.64	2021	5.06	2080	5.47	2137	5.89	2193	6.32	2247	6.75
4800	2089	1728	3.27	1793	3.64	1858	4.04	1924	4.46	1989	4.89	2051	5.32	2110	5.75	2166	6.19	2221	6.62	2275	7.07
5000	2176	1767	3.49	1830	3.88	1892	4.28	1956	4.71	2018	5.14	2080	5.59	2140	6.04	2196	6.49	2250	6.94	2303	7.40
5400	2350	1849	3.98	1908	4.40	1966	4.82	2024	5.24	2082	5.69	2140	6.15	2198	6.63	2254	7.11	2310	7.61	2362	8.09
5800	2524	1933	4.52	1990	4.97	2045	5.41	2099	5.86	2152	6.32	2206	6.79	2260	7.28	2314	7.78	2367	8.29	2420	8.81
6200	2698	2017	5.09	2073	5.58	2126	6.06	2178	6.54	2228	7.02	2278	7.50	2328	7.99	2379	8.50	2429	9.03	2480	9.57
6600	2873	2103	5.69	2157	6.24	2210	6.76	2260	7.28	2308	7.79	2355	8.29	2402	8.80	2449	9.32	2496	9.86	2543	10.40
7000	3047	2189	6.35	2242	6.93	2294	7.51	2343	8.07	2390	8.62	2436	9.15	2480	9.68	2525	10.22	2569	10.77	2613	11.32
7500	3264	2300	7.25	2350	7.87	2400	8.50	2448	9.12	2495	9.73	2538	10.30	2581	10.88	2624	11.46	2665	12.02	2706	12.60
8000	3482	2413	8.27	2461	8.91	2508	9.57	2554	10.24	2600	10.91	2643	11.54	2685	12.17	2726	12.80	2766	13.40	2805	14.02
8500	3700	2529	9.40	2574	10.07	2618	10.75	2662	11.45	2706	12.16	2749	12.87	2790	13.55	2830	14.23	2869	14.88	2907	15.54
9000	3917	2647	10.66	2689	11.34	2731	12.05	2773	12.78	2814	13.52	2856	14.27	2896	15.01	2935	15.74				
9500	4135	2767	12.06	2806	12.76	2845	13.48	2885	14.23	2924	15.00										
Volume O.Vel	8"SP		8-1/2"SP		9"SP		9-1/2"SP		10"SP		10-1/2"SP		11"SP		11-1/2"SP		12"SP		13"SP		
CFM	FPM	RPM	BHP	RPM	BHP	RPM	BHP	RPM	BHP	RPM	BHP	RPM	BHP	RPM	BHP	RPM	BHP	RPM	BHP	RPM	BHP
4600	2002	2301	7.19	2356	7.65																
4800	2089	2326	7.51	2379	7.97	2431	8.44	2484	8.93												
5000	2176	2354	7.85	2404	8.31	2455	8.80	2504	9.27	2555	9.78	2606	10.28								
5400	2350	2412	8.57	2462	9.07	2509	9.55	2557	10.06	2603	10.55	2650	11.07	2695	11.58	2742	12.12	2788	12.66	2835	13.21
5800	2524	2471	9.33	2520	9.85	2569	10.38	2614	10.89	2660	11.42	2703	11.94	2748	12.49	2790	13.01	2834	13.57	2885	14.14
6200	2698	2529	10.11	2579	10.67	2626	11.22	2673	11.78	2718	12.34	2762	12.90	2805	13.45	2847	14.01	2888	14.57		
6600	2873	2591	10.96	2638	11.54	2685	12.11	2732	12.71	2776	13.29	2821	13.89	2863	14.47	2906	15.08	2946	15.65		
7000	3047	2657	11.89	2702	12.47	2746	13.07	2791	13.67	2835	14.28	2879	14.91	2921	15.5						

Wheel Diameter = 22.25 in.
 Outlet Area = 2.85 sq. ft. inside
 Maximum BHP = 1.07 x (RPM/1000)³
 Tip Speed, fpm = 5.83 x RPM

Size

2225 SISW

Design 7610 Centrifugal Airfoil Fans

Class I RPM 2180
 Class II RPM 2669
 Class III RPM 3357

Volume O.Vel		1/4"SP		3/8"SP		1/2"SP		5/8"SP		3/4"SP		7/8"SP		1"SP		1-1/4"SP		1-1/2"SP		1-3/4"SP	
CFM	FPM	RPM	BHP	RPM	BHP	RPM	BHP	RPM	BHP	RPM	BHP	RPM	BHP	RPM	BHP	RPM	BHP	RPM	BHP	RPM	BHP
1000	352	367	0.05																		
1500	527	420	0.08	477	0.11	526	0.15	574	0.19												
2000	703	491	0.13	536	0.17	580	0.21	623	0.25	662	0.30	698	0.34	733	0.39						
2500	879	569	0.19	609	0.24	646	0.29	681	0.34	716	0.39	751	0.45	784	0.50	845	0.62	902	0.74		
3000	1055	651	0.27	687	0.33	721	0.40	752	0.46	782	0.51	811	0.57	840	0.64	899	0.77	954	0.90	1005	1.04
3500	1231	738	0.39	768	0.45	799	0.53	829	0.60	856	0.67	882	0.74	908	0.81	958	0.94	1008	1.09	1058	1.25
4000	1407	828	0.54	854	0.61	880	0.68	907	0.77	933	0.85	958	0.93	982	1.01	1027	1.17	1071	1.32	1115	1.49
4500	1582	919	0.72	942	0.80	965	0.88	989	0.97	1012	1.06	1036	1.15	1059	1.25	1102	1.43	1143	1.61	1182	1.78
5000	1758	1012	0.95	1032	1.03	1053	1.12	1073	1.21	1095	1.31	1116	1.41	1137	1.51	1179	1.73	1218	1.93	1255	2.12
5500	1934	1105	1.23	1123	1.32	1142	1.41	1161	1.51	1180	1.61	1199	1.71	1218	1.82	1257	2.05	1295	2.28	1331	2.51
6000	2110	1199	1.56	1216	1.66	1233	1.76	1250	1.86	1267	1.96	1284	2.07	1302	2.19	1337	2.43	1373	2.68	1408	2.93
6500	2286	1293	1.95	1309	2.05	1325	2.16	1340	2.27	1356	2.38	1372	2.49	1388	2.61	1420	2.86	1453	3.12	1486	3.39
7000	2462	1388	2.40	1402	2.51	1417	2.62	1432	2.73	1446	2.85	1461	2.97	1476	3.10	1505	3.35	1535	3.62	1566	3.91
7500	2637	1483	2.91	1496	3.03	1510	3.15	1524	3.27	1537	3.40	1551	3.52	1565	3.65	1592	3.91	1620	4.19	1648	4.49
8000	2813	1578	3.50	1591	3.63	1604	3.75	1617	3.88	1629	4.01	1642	4.14	1655	4.28	1680	4.55	1706	4.84	1732	5.14
8500	2989	1673	4.16	1686	4.30	1698	4.43	1710	4.57	1722	4.70	1734	4.84	1746	4.98	1770	5.27	1794	5.57	1818	5.88
9000	3165	1769	4.91	1781	5.05	1792	5.19	1803	5.33	1815	5.48	1826	5.62	1837	5.77	1860	6.07	1882	6.38	1905	6.70
9500	3341	1864	5.74	1876	5.89	1887	6.04	1897	6.19	1908	6.34	1919	6.49	1930	6.64	1951	6.96	1972	7.27	1994	7.60
10000	3517	1960	6.66	1971	6.82	1982	6.98	1992	7.13	2002	7.29	2012	7.45	2022	7.61	2042	7.93	2063	8.27	2083	8.60
10500	3692	2056	7.68	2066	7.84	2077	8.01	2086	8.17	2096	8.33	2106	8.50	2116	8.67	2135	9.01	2154	9.35	2173	9.70
11000	3868	2152	8.79	2162	8.97	2172	9.14	2181	9.31	2190	9.48	2200	9.65	2209	9.83	2227	10.18	2245	10.54	2264	10.90
11500	4044	2248	10.01	2258	10.19	2267	10.38	2276	10.56	2285	10.74	2294	10.91	2303	11.09	2321	11.47	2338	11.83	2355	12.21
12000	4220	2344	11.35	2353	11.53	2362	11.72	2371	11.91	2380	12.10	2388	12.28	2397	12.47	2414	12.85	2430	13.24	2447	13.62
13000	4572	2537	14.36	2545	14.56	2553	14.76	2562	14.97	2570	15.18	2578	15.38	2586	15.57	2601	15.98	2617	16.39	2632	16.81
14000	4923	2730	17.86	2737	18.08	2745	18.29	2753	18.51	2760	18.74	2768	18.96	2776	19.18	2790	19.61	2804	20.04	2818	20.49
Volume O.Vel		2"SP		2-1/2"SP		3"SP		3-1/2"SP		4"SP		4-1/2"SP		5"SP		5-1/2"SP		6"SP		6-1/2"SP	
CFM	FPM	RPM	BHP	RPM	BHP	RPM	BHP	RPM	BHP	RPM	BHP	RPM	BHP	RPM	BHP	RPM	BHP	RPM	BHP	RPM	BHP
3000	1055	1052	1.18	1146	1.48																
3500	1231	1105	1.41	1191	1.73	1271	2.06														
4000	1407	1159	1.66	1244	2.02	1322	2.38	1394	2.75	1463	3.14										
4500	1582	1220	1.96	1298	2.34	1375	2.74	1447	3.15	1513	3.56	1576	3.98	1638	4.41	1701	4.86				
5000	1758	1290	2.31	1360	2.71	1430	3.13	1500	3.57	1566	4.03	1628	4.48	1687	4.93	1743	5.40	1799	5.87	1856	6.37
5500	1934	1365	2.73	1429	3.15	1492	3.58	1556	4.04	1620	4.52	1681	5.01	1740	5.51	1796	6.01	1849	6.51	1901	7.02
6000	2110	1441	3.17	1502	3.64	1561	4.11	1619	4.58	1677	5.07	1736	5.59	1793	6.12	1849	6.66	1903	7.20	1954	7.74
6500	2286	1518	3.66	1578	4.19	1634	4.70	1689	5.20	1742	5.71	1796	6.24	1850	6.79	1903	7.35	1956	7.93	2007	8.51
7000	2462	1596	4.20	1655	4.78	1710	5.34	1762	5.89	1812	6.42	1861	6.97	1911	7.53	1961	8.11	2011	8.71	2060	9.32
7500	2637	1676	4.79	1733	5.42	1786	6.04	1837	6.63	1885	7.21	1932	7.79	1978	8.37	2024	8.96	2071	9.58	2117	10.20
8000	2813	1758	5.46	1811	6.11	1864	6.78	1913	7.43	1960	8.07	2006	8.69	2050	9.30	2093	9.92	2136	10.54	2179	11.18
8500	2989	1842	6.20	1892	6.87	1942	7.58	1990	8.29	2037	8.98	2081	9.65	2124	10.31	2165	10.97	2206	11.61	2246	12.27
9000	3165	1928	7.02	1975	7.72	2022	8.45	2069	9.21	2114	9.95	2157	10.68	2199	11.38	2239	12.09	2279	12.78	2317	13.46
9500	3341	2015	7.94	2058	8.65	2103	9.40	2147	10.18	2192	10.98	2234	11.77	2275	12.53	2315	13.28	2353	14.03	2390	14.74
10000	3517	2103	8.95	2144	9.68	2186	10.44	2228	11.25	2270	12.07	2312	12.91	2352	13.74	2391	14.54	2429	15.33	2465	16.11
10500	3692	2192	10.06	2231	10.80	2270	11.58	2310	12.41	2350	13.26	2390	14.12	2429	15.00	2468	15.88	2505	16.71	2541	17.55
11000	3868	2282	11.27	2319	12.03	2356	12.83	2393	13.66	2431	14.54	2470	15.44	2508	16.34	2545	17.26	2582	18.18	2617	19.05
11500	4044	2373	12.59	2407	13.37	2442	14.18	2478	15.04	2514	15.92	2551	16.84	2587	17.79	2623	18.73	2659	19.69	2694	20.64
12000	4220	2464	14.02	2497	14.82	2530	15.66	2564	16.52	2598	17.42	2633	18.36	2668	19.32	2703	20.31	2737	21.29	2772	22.29
13000	4572	2647	17.22	2678	18.08	2708	18.95	2739	19.86	2770	20.78	2801	21.75	2833	22.74	2865	23.77	2897	24.82	2929	25.88
14000	4923	2832	20.93	2860	21.83	2889	22.76	2917	23.69	2945	24.67	2974	25.65	3003	26.68	3032	27.73	3061	28.82	3091	29.92
Volume O.Vel		7"SP		8"SP		9"SP		10"SP		12"SP		14"SP		16"SP		18"SP		20"SP		21"SP	
CFM	FPM	RPM	BHP	RPM	BHP	RPM	BHP	RPM	BHP	RPM	BHP	RPM	BHP	RPM	BHP	RPM	BHP	RPM	BHP	RPM	BHP
5500	1934	1952	7.54	2054	8.62																
6000	2110	2003	8.29	2097	9.39	2190	10.55														
6500	2286	2056	9.10	2149	10.28	2237	11.47	2323	12.69												
7000	2462	2110	9.95	2202	11.20	2289	12.46	2372	13.73	2531	16.36										
7500	2637	2164	10.84	2256	12.18	2343	13.52	2425	14.87	2578	17.60	2725	20.42								
8000	2813	2223	11.84	2310	13.20	2396	14.62	2478	16.06	2631	18.92	2771	21.82	2909	24.86						
8500	2989	2287	12.94	2368	14.32	2450	15.77	2531	17.26	2683	20.30	2823	23.36	2954	26.43	3084	29.66				
9000	3165	2356	14.15	2432	15.56	2508	17.03	2585	18.56	2736	21.73	2877	24.97	3005	28.16	3129	31.43	3251	34.83	3313	36.62
9500	3341	2427	15.47	2499	16.92	2571	18.41	2644	19.96	2789	23.22	2929	26.61	3058	29.98	3179	33.35	3296	36.80	3355	38.61
10000	3517	2501	16.87	2570	18.39	2639	19.92	2707	21.50	2845	24.81	2982	28.30	3111	31.84	3232	35.38	3346	38.94		
10500	3692	2576	18.36	2643	19.97	2709	21.56	2774	23.17	2904	26.52	3036	30.08	3164	33.75	3285	37.46				
11000	3868	2652	19.95	2719	21.65	2782	23.32	2844	24.98												

Wheel Diameter = 24.50 in.
 Outlet Area = 3.45 sq. ft. inside
 Maximum BHP = 1.59 x (RPM/1000)³
 Tip Speed, fpm = 6.41 x RPM

Class I RPM 1988
 Class II RPM 2428
 Class III RPM 3054

Size
2450 SISW
 Design 7610 Centrifugal Airfoil Fans

Volume O.Vel		1/4"SP		3/8"SP		1/2"SP		5/8"SP		3/4"SP		7/8"SP		1"SP		1-1/4"SP		1-1/2"SP		1-3/4"SP	
CFM	FPM	RPM	BHP	RPM	BHP	RPM	BHP	RPM	BHP	RPM	BHP	RPM	BHP	RPM	BHP	RPM	BHP	RPM	BHP	RPM	BHP
2000	580	410	0.11	459	0.15	503	0.20	541	0.24	574	0.28										
2500	725	466	0.16	507	0.20	547	0.26	585	0.31	620	0.37	652	0.42	681	0.48	736	0.59				
3000	870	527	0.22	564	0.28	598	0.34	631	0.39	664	0.46	696	0.52	726	0.59	781	0.73	827	0.85	873	0.99
3500	1015	591	0.30	624	0.37	655	0.44	685	0.50	714	0.57	742	0.64	770	0.71	824	0.87	874	1.03	919	1.18
4000	1160	658	0.41	687	0.48	715	0.56	743	0.63	769	0.71	795	0.78	820	0.86	869	1.03	918	1.20	962	1.38
4500	1305	725	0.53	752	0.62	778	0.70	803	0.79	828	0.88	851	0.96	874	1.05	919	1.22	963	1.40	1007	1.60
5000	1450	794	0.68	819	0.78	843	0.88	866	0.97	889	1.07	911	1.16	932	1.26	974	1.44	1014	1.63	1054	1.83
5500	1595	863	0.87	887	0.97	909	1.08	931	1.18	952	1.29	972	1.39	992	1.50	1031	1.71	1069	1.91	1106	2.12
6000	1740	933	1.08	955	1.20	976	1.31	996	1.43	1016	1.54	1035	1.65	1054	1.77	1091	2.00	1127	2.23	1161	2.45
6500	1885	1004	1.33	1024	1.46	1044	1.58	1063	1.71	1082	1.83	1100	1.95	1118	2.08	1152	2.33	1186	2.57	1219	2.82
7000	2030	1075	1.62	1094	1.75	1112	1.89	1131	2.02	1148	2.16	1165	2.29	1182	2.42	1215	2.69	1247	2.96	1278	3.22
7500	2175	1146	1.95	1164	2.09	1182	2.24	1199	2.38	1216	2.52	1232	2.67	1248	2.81	1279	3.10	1310	3.38	1339	3.67
8000	2320	1217	2.32	1235	2.48	1251	2.63	1268	2.78	1284	2.94	1299	3.09	1315	3.24	1345	3.55	1374	3.85	1402	4.16
8500	2465	1289	2.74	1306	2.91	1321	3.07	1337	3.24	1352	3.40	1367	3.56	1382	3.72	1410	4.04	1438	4.37	1465	4.69
9000	2610	1361	3.21	1377	3.39	1392	3.56	1407	3.73	1421	3.91	1436	4.08	1450	4.25	1477	4.59	1504	4.94	1529	5.28
9500	2755	1434	3.74	1448	3.92	1463	4.11	1477	4.28	1491	4.47	1504	4.65	1518	4.83	1544	5.19	1570	5.55	1595	5.92
10000	2900	1506	4.32	1520	4.51	1534	4.70	1547	4.89	1561	5.09	1574	5.28	1587	5.47	1612	5.85	1637	6.24	1660	6.61
11000	3190	1651	5.66	1664	5.87	1676	6.08	1689	6.30	1701	6.50	1713	6.71	1726	6.93	1749	7.34	1772	7.77	1794	8.18
12000	3480	1796	7.25	1809	7.49	1820	7.71	1832	7.95	1843	8.18	1854	8.41	1865	8.64	1887	9.10	1909	9.56	1930	10.02
13000	3771	1942	9.13	1953	9.39	1964	9.64	1975	9.88	1986	10.14	1996	10.39	2007	10.64	2027	11.13	2047	11.64	2066	12.12
14000	4061	2088	11.32	2099	11.59	2109	11.87	2119	12.13	2129	12.40	2139	12.67	2149	12.95	2167	13.47	2186	14.01	2205	14.55
15000	4351	2234	13.84	2244	14.13	2254	14.42	2264	14.72	2273	15.00	2282	15.28	2291	15.57	2309	16.16	2327	16.72	2344	17.30
16000	4641	2381	16.71	2390	17.02	2399	17.33	2408	17.65	2417	17.95	2426	18.25	2434	18.55	2451	19.18	2468	19.79	2484	20.39
17000	4931	2527	19.96	2536	20.28	2545	20.61	2553	20.95	2562	21.29	2570	21.60	2578	21.92	2594	22.57	2610	23.24	2625	23.87
18000	5221	2674	23.61	2682	23.95	2690	24.30	2698	24.65	2707	25.01	2715	25.36	2722	25.69	2737	26.37	2752	27.07	2768	27.77
Volume O.Vel		2"SP		2-1/2"SP		3"SP		3-1/2"SP		4"SP		4-1/2"SP		5"SP		5-1/2"SP		6"SP		6-1/2"SP	
CFM	FPM	RPM	BHP	RPM	BHP	RPM	BHP	RPM	BHP	RPM	BHP	RPM	BHP	RPM	BHP	RPM	BHP	RPM	BHP	RPM	BHP
3500	1015	959	1.33	1037	1.64																
4000	1160	1005	1.56	1080	1.91	1148	2.25														
4500	1305	1048	1.79	1126	2.20	1194	2.59	1255	2.97	1316	3.37										
5000	1450	1093	2.04	1169	2.49	1239	2.93	1303	3.38	1359	3.80	1413	4.23	1468	4.68						
5500	1595	1142	2.33	1214	2.80	1282	3.28	1346	3.77	1406	4.27	1460	4.74	1510	5.20	1559	5.67	1609	6.17		
6000	1740	1195	2.68	1261	3.14	1327	3.66	1390	4.19	1449	4.71	1505	5.26	1558	5.79	1606	6.29	1651	6.80	1695	7.31
6500	1885	1251	3.06	1313	3.55	1374	4.07	1434	4.62	1494	5.20	1548	5.77	1601	6.35	1653	6.94	1700	7.51	1742	8.04
7000	2030	1309	3.49	1368	4.01	1425	4.54	1481	5.10	1538	5.70	1593	6.32	1645	6.93	1694	7.55	1743	8.17	1789	8.80
7500	2175	1368	3.95	1425	4.52	1479	5.07	1532	5.65	1585	6.25	1637	6.88	1689	7.54	1738	8.20	1786	8.86	1832	9.53
8000	2320	1429	4.46	1483	5.07	1536	5.66	1586	6.26	1636	6.87	1685	7.51	1734	8.19	1783	8.89	1830	9.59	1875	10.29
8500	2465	1492	5.02	1543	5.66	1593	6.30	1642	6.93	1690	7.57	1736	8.22	1782	8.89	1828	9.60	1874	10.33	1919	11.08
9000	2610	1555	5.62	1604	6.31	1653	6.99	1700	7.67	1745	8.33	1790	9.00	1834	9.68	1877	10.39	1920	11.13	1964	11.90
9500	2755	1619	6.28	1667	7.01	1713	7.73	1758	8.44	1802	9.15	1845	9.85	1888	10.56	1929	11.28	1970	12.02	2011	12.79
10000	2900	1684	6.99	1730	7.75	1774	8.51	1818	9.27	1860	10.02	1902	10.76	1943	11.50	1983	12.25	2022	13.00	2061	13.77
11000	3190	1816	8.60	1859	9.43	1900	10.27	1941	11.11	1980	11.95	2019	12.78	2057	13.58	2095	14.39	2132	15.21	2168	16.02
12000	3480	1950	10.47	1990	11.37	2029	12.28	2067	13.19	2104	14.12	2140	15.02	2176	15.92	2212	16.82	2246	17.70	2280	18.58
13000	3771	2086	12.63	2124	13.61	2160	14.58	2196	15.56	2231	16.56	2265	17.54	2299	18.52	2332	19.52	2365	20.47	2397	21.45
14000	4061	2223	15.07	2258	16.14	2293	17.21	2327	18.25	2360	19.30	2393	20.37	2424	21.41	2456	22.49	2487	23.53	2517	24.59
15000	4351	2361	17.87	2395	19.01	2427	20.13	2460	21.27	2491	22.39	2522	23.52	2552	24.65	2582	25.78	2611	26.91	2640	28.04
16000	4641	2501	21.01	2532	22.21	2564	23.45	2594	24.62	2624	25.84	2653	27.03	2682	28.24	2710	29.43	2739	30.65	2766	31.83
17000	4931	2641	24.51	2671	25.83	2701	27.09	2730	28.39	2758	29.65	2786	30.94	2813	32.19	2841	33.49	2867	34.73	2894	36.02
18000	5221	2782	28.44	2811	29.81	2839	31.17	2866	32.52	2894	33.88	2920	35.21	2947	36.58	2972	37.90	2998	39.26	3023	40.59
Volume O.Vel		7"SP		8"SP		9"SP		10"SP		12"SP		14"SP		16"SP		18"SP		20"SP		21"SP	
CFM	FPM	RPM	BHP	RPM	BHP	RPM	BHP	RPM	BHP	RPM	BHP	RPM	BHP	RPM	BHP	RPM	BHP	RPM	BHP	RPM	BHP
6000	1740	1741	7.85																		
6500	1885	1784	8.59	1866	9.71																
7000	2030	1833	9.43	1911	10.58	1987	11.77														
7500	2175	1876	10.20	1960	11.53	2034	12.78	2104	14.02												
8000	2320	1919	10.99	2003	12.42	2082	13.83	2151	15.16	2284	17.87										
8500	2465	1963	11.83	2045	13.31	2125	14.83	2199	16.33	2328	19.15	2454	22.10								
9000	2610	2008	12.70	2089	14.26	2167	15.84	2242	17.44	2376	20.56	2495	23.52	2616	26.77						
9500	2755	2053	13.60	2134	15.25	2211	16.90	2284	18.56	2422	21.93	2542	25.12	2653	28.27	2770	31.75				
10000	2900	2100	14.58	2178	16.26	2255	18.00	2328	19.74	2465	23.26	2591	26.79	2701	30.09	2805	33.39	2915	37.07		
11000	3190	2204	16.84	2275	18.53	2346	20.33	2416	22.22	2551	26.04	2677	29.90	2793	33.76	2898	37.45	2994	41.02	3042	42.83
12000	3480	2315	19.48	2381	21.25	2446	23.06	2510	24.95	2640	29.00	2763	33.16								

Wheel Diameter = 27.00 in.
 Outlet Area = 4.19 sq. ft. inside
 Maximum BHP = 2.58 x (RPM/1000)³
 Tip Speed, fpm = 7.07 x RPM

Size

2700 sisw

Design 7610 Centrifugal Airfoil Fans

Class I RPM 1804
 Class II RPM 2203
 Class III RPM 2771

Volume O.Vel		1/4"SP		3/8"SP		1/2"SP		5/8"SP		3/4"SP		7/8"SP		1"SP		1-1/4"SP		1-1/2"SP		1-3/4"SP	
CFM	FPM	RPM	BHP	RPM	BHP	RPM	BHP	RPM	BHP	RPM	BHP	RPM	BHP	RPM	BHP	RPM	BHP	RPM	BHP	RPM	BHP
3000	716	420	0.19	458	0.24	494	0.31	529	0.37	560	0.44	590	0.51	615	0.57						
3500	836	465	0.25	499	0.31	531	0.38	562	0.45	593	0.53	622	0.61	649	0.69						
4000	955	513	0.32	543	0.40	573	0.48	601	0.55	628	0.63	655	0.72	682	0.80	698	0.84	741	0.99		
4500	1075	561	0.42	590	0.50	617	0.59	643	0.67	668	0.76	692	0.84	716	0.94	764	1.13	809	1.33	816	1.33
5000	1194	611	0.53	637	0.62	662	0.72	687	0.81	710	0.91	733	1.00	755	1.09	799	1.30	842	1.51	883	1.54
5500	1313	662	0.66	686	0.76	710	0.87	732	0.97	754	1.08	775	1.18	796	1.28	837	1.49	876	1.71	916	1.95
6000	1433	713	0.81	736	0.92	758	1.04	779	1.15	800	1.27	820	1.38	839	1.49	878	1.72	914	1.95	951	2.19
6500	1552	765	0.98	786	1.11	807	1.23	827	1.36	846	1.48	865	1.60	884	1.73	920	1.97	955	2.22	989	2.46
7000	1672	817	1.18	837	1.32	857	1.45	876	1.59	894	1.72	912	1.85	930	1.99	964	2.26	997	2.52	1030	2.78
7500	1791	869	1.41	888	1.56	907	1.70	925	1.84	943	1.99	960	2.13	977	2.28	1009	2.56	1041	2.85	1072	3.13
8000	1911	922	1.67	940	1.83	958	1.98	975	2.13	992	2.29	1008	2.44	1025	2.59	1056	2.90	1086	3.20	1115	3.50
8500	2030	975	1.97	992	2.13	1009	2.29	1026	2.45	1042	2.62	1057	2.78	1073	2.94	1103	3.27	1132	3.59	1160	3.91
9000	2149	1028	2.29	1045	2.46	1061	2.64	1077	2.81	1092	2.98	1107	3.15	1122	3.32	1151	3.67	1178	4.01	1205	4.36
9500	2269	1081	2.65	1097	2.83	1113	3.02	1128	3.20	1143	3.38	1157	3.56	1171	3.74	1199	4.10	1226	4.47	1252	4.83
10000	2388	1135	3.05	1150	3.25	1165	3.44	1180	3.63	1194	3.82	1208	4.01	1221	4.20	1248	4.58	1274	4.96	1299	5.34
11000	2627	1243	3.97	1257	4.18	1270	4.40	1284	4.61	1297	4.82	1310	5.03	1323	5.24	1347	5.66	1371	6.08	1395	6.49
12000	2866	1351	5.07	1364	5.30	1376	5.53	1389	5.76	1401	5.99	1413	6.22	1425	6.45	1448	6.91	1471	7.37	1492	7.82
13000	3105	1459	6.36	1471	6.61	1483	6.86	1495	7.11	1506	7.36	1517	7.61	1528	7.86	1550	8.35	1571	8.85	1592	9.35
14000	3343	1568	7.85	1579	8.12	1590	8.39	1601	8.66	1612	8.93	1622	9.20	1633	9.47	1653	10.00	1673	10.54	1692	11.07
15000	3582	1676	9.57	1687	9.87	1697	10.15	1708	10.43	1718	10.73	1728	11.02	1737	11.30	1757	11.89	1776	12.45	1795	13.03
16000	3821	1785	11.53	1795	11.84	1805	12.15	1815	12.45	1824	12.76	1834	13.08	1843	13.38	1861	13.99	1880	14.61	1897	15.21
17000	4060	1894	13.74	1904	14.07	1914	14.41	1922	14.73	1931	15.05	1940	15.38	1949	15.72	1966	16.36	1984	17.01	2000	17.66
18000	4299	2004	16.23	2013	16.58	2022	16.93	2030	17.28	2039	17.62	2047	17.96	2056	18.31	2072	19.01	2088	19.68	2105	20.38
19000	4537	2113	19.00	2121	19.37	2130	19.74	2139	20.12	2147	20.47	2154	20.83	2162	21.19	2178	21.94	2194	22.65	2209	23.37
20000	4776	2222	22.08	2231	22.46	2239	22.85	2247	23.25	2255	23.64	2262	24.01	2270	24.39	2285	25.16	2300	25.94	2314	26.68
Volume O.Vel		2"SP		2-1/2"SP		3"SP		3-1/2"SP		4"SP		4-1/2"SP		5"SP		5-1/2"SP		6"SP		6-1/2"SP	
CFM	FPM	RPM	BHP	RPM	BHP	RPM	BHP	RPM	BHP	RPM	BHP	RPM	BHP	RPM	BHP	RPM	BHP	RPM	BHP	RPM	BHP
4000	955	853	1.50																		
4500	1075	888	1.73	955	2.11																
5000	1194	921	1.96	991	2.40	1050	2.82														
5500	1313	954	2.20	1024	2.69	1087	3.17	1141	3.63	1196	4.12										
6000	1433	987	2.45	1056	2.98	1119	3.51	1178	4.05	1228	4.55	1277	5.06								
6500	1552	1023	2.72	1089	3.29	1152	3.86	1210	4.44	1264	5.02	1312	5.57	1357	6.11	1404	6.69				
7000	1672	1061	3.04	1123	3.61	1185	4.22	1243	4.85	1296	5.47	1347	6.09	1393	6.69	1436	7.28	1478	7.88	1522	8.51
7500	1791	1102	3.41	1160	3.98	1219	4.61	1275	5.27	1329	5.93	1380	6.60	1428	7.28	1473	7.94	1513	8.55	1552	9.17
8000	1911	1144	3.80	1200	4.40	1254	5.03	1309	5.71	1362	6.42	1412	7.12	1460	7.83	1506	8.55	1549	9.26	1589	9.93
8500	2030	1187	4.23	1241	4.87	1293	5.51	1344	6.19	1395	6.92	1445	7.67	1492	8.41	1537	9.16	1581	9.92	1623	10.69
9000	2149	1232	4.70	1284	5.37	1334	6.04	1382	6.73	1430	7.46	1478	8.23	1525	9.03	1570	9.81	1613	10.60	1655	11.41
9500	2269	1277	5.20	1327	5.91	1375	6.62	1422	7.33	1467	8.06	1513	8.84	1559	9.65	1603	10.49	1646	11.32	1687	12.16
10000	2388	1323	5.73	1371	6.49	1418	7.23	1463	7.97	1507	8.73	1550	9.50	1593	10.32	1637	11.18	1679	12.06	1721	12.95
11000	2627	1418	6.91	1462	7.75	1506	8.59	1548	9.41	1590	10.23	1630	11.05	1669	11.88	1708	12.73	1748	13.63	1787	14.58
12000	2866	1514	8.28	1556	9.19	1597	10.10	1636	11.01	1675	11.91	1713	12.79	1751	13.68	1787	14.58	1823	15.50	1859	16.43
13000	3105	1612	9.83	1652	10.82	1690	11.81	1728	12.80	1764	13.78	1800	14.75	1836	15.72	1870	16.68	1904	17.63	1938	18.61
14000	3343	1712	11.61	1749	12.67	1786	13.73	1821	14.79	1856	15.85	1890	16.91	1924	17.97	1956	18.99	1989	20.02	2021	21.07
15000	3582	1812	13.59	1848	14.72	1883	15.86	1916	17.01	1949	18.13	1981	19.27	2014	20.42	2045	21.53	2076	22.64	2106	23.76
16000	3821	1914	15.83	1948	17.03	1981	18.23	2013	19.44	2045	20.67	2075	21.86	2106	23.08	2136	24.30	2165	25.48	2194	26.71
17000	4060	2017	18.30	2049	19.59	2081	20.89	2111	22.15	2141	23.43	2171	24.74	2199	26.00	2228	27.30	2256	28.57	2284	29.86
18000	4299	2120	21.06	2151	22.44	2181	23.78	2210	25.14	2239	26.49	2267	27.84	2295	29.21	2322	30.55	2349	31.94	2376	33.27
19000	4537	2224	24.12	2253	25.54	2282	26.99	2310	28.41	2338	29.83	2365	31.27	2391	32.68	2418	34.12	2443	35.54	2469	36.98
20000	4776	2328	27.45	2357	28.97	2384	30.49	2411	31.98	2438	33.50	2463	34.98	2489	36.49	2514	37.97	2539	39.48	2564	40.99
Volume O.Vel		7"SP		8"SP		9"SP		10"SP		12"SP		14"SP		16"SP		18"SP		20"SP		21"SP	
CFM	FPM	RPM	BHP	RPM	BHP	RPM	BHP	RPM	BHP	RPM	BHP	RPM	BHP	RPM	BHP	RPM	BHP	RPM	BHP	RPM	BHP
7500	1791	1592	9.82																		
8000	1911	1627	10.61	1700	11.96																
8500	2030	1664	11.45	1734	12.85	1803	14.29														
9000	2149	1696	12.23	1771	13.80	1837	15.28	1902	16.80												
9500	2269	1727	13.00	1804	14.71	1873	16.34	1936	17.91	2061	21.22										
10000	2388	1760	13.82	1836	15.59	1907	17.37	1972	19.08	2090	22.40										
11000	2627	1827	15.55	1901	17.46	1971	19.38	2038	21.33	2162	25.17	2268	28.77	2377	32.64						
12000	2866	1895	17.40	1967	19.45	2037	21.55	2103	23.64	2227	27.86	2342	32.09	2440	35.98	2536	40.01				
13000	3105	1971	19.59	2037	21.65	2104	23.82	2169	26.08	2292	30.62	2406	35.17	2512	39.73	2604	44.00	2692	48.23	2737	50.45
14000	3343	2052	22.08	2114	24.18	2175	26.36	2236	28.67	2357	33.50	2470	38.37	2575	43.24	2674	48.14	2763	52.77		

Wheel Diameter = 30.00 in.
 Outlet Area = 5.17 sq. ft. inside
 Maximum BHP = 4.37 x (RPM/1000)³
 Tip Speed, fpm = 7.85 x RPM

Class I RPM 1623
 Class II RPM 1982
 Class III RPM 2493

Size

3000 SISW

Design 7610 Centrifugal Airfoil Fans

Volume O.Vel		1/4"SP		3/8"SP		1/2"SP		5/8"SP		3/4"SP		7/8"SP		1"SP		1-1/4"SP		1-1/2"SP		1-3/4"SP	
CFM	FPM	RPM	BHP	RPM	BHP	RPM	BHP	RPM	BHP	RPM	BHP	RPM	BHP	RPM	BHP	RPM	BHP	RPM	BHP	RPM	BHP
3000	580	335	0.16	375	0.23	411	0.29	442	0.36	469	0.42										
4000	774	397	0.27	429	0.34	460	0.42	490	0.51	518	0.59	545	0.68	569	0.77	611	0.94				
5000	967	466	0.41	493	0.51	519	0.60	544	0.70	569	0.79	593	0.90	617	1.01	661	1.23	702	1.46	737	1.67
6000	1161	537	0.61	562	0.72	584	0.84	607	0.95	628	1.06	649	1.18	669	1.29	710	1.54	749	1.81	786	2.07
7000	1354	611	0.87	633	1.00	653	1.14	673	1.27	692	1.41	711	1.54	730	1.67	765	1.93	800	2.21	835	2.50
8000	1548	686	1.20	706	1.36	724	1.51	743	1.66	760	1.82	777	1.97	794	2.12	827	2.42	858	2.72	889	3.03
9000	1741	762	1.62	780	1.80	797	1.97	814	2.14	830	2.31	846	2.48	861	2.66	891	3.00	920	3.34	949	3.68
10000	1934	839	2.14	856	2.33	872	2.52	887	2.71	902	2.90	916	3.09	931	3.28	959	3.67	985	4.05	1012	4.43
11000	2128	917	2.75	932	2.96	947	3.18	961	3.39	975	3.60	988	3.81	1002	4.02	1028	4.44	1053	4.86	1078	5.28
12000	2321	995	3.48	1009	3.72	1022	3.95	1036	4.18	1049	4.41	1061	4.63	1074	4.87	1098	5.32	1122	5.78	1145	6.24
13000	2515	1073	4.34	1086	4.60	1099	4.84	1111	5.10	1123	5.34	1136	5.60	1147	5.84	1170	6.33	1193	6.83	1215	7.33
14000	2708	1151	5.34	1164	5.61	1176	5.88	1187	6.15	1199	6.42	1210	6.68	1222	6.96	1243	7.48	1264	8.01	1285	8.55
15000	2902	1230	6.48	1242	6.77	1253	7.06	1264	7.35	1275	7.64	1286	7.93	1296	8.21	1317	8.78	1337	9.36	1356	9.92
16000	3095	1309	7.78	1320	8.09	1331	8.39	1341	8.71	1351	9.01	1362	9.32	1372	9.63	1391	10.24	1410	10.84	1429	11.46
17000	3288	1388	9.24	1399	9.57	1409	9.90	1419	10.23	1429	10.56	1438	10.88	1448	11.21	1466	11.86	1485	12.52	1502	13.15
18000	3482	1468	10.89	1478	11.24	1487	11.58	1496	11.93	1506	12.28	1515	12.62	1524	12.96	1542	13.67	1559	14.34	1576	15.03
19000	3675	1547	12.72	1556	13.10	1565	13.46	1574	13.82	1583	14.19	1592	14.56	1601	14.92	1618	15.65	1634	16.37	1651	17.10
20000	3869	1626	14.75	1635	15.14	1644	15.53	1653	15.91	1661	16.29	1670	16.69	1678	17.07	1694	17.83	1710	18.61	1726	19.35
21000	4062	1706	16.99	1715	17.40	1723	17.82	1731	18.21	1739	18.61	1747	19.02	1755	19.43	1771	20.22	1786	21.03	1801	21.84
22000	4256	1786	19.46	1794	19.88	1802	20.32	1810	20.74	1817	21.15	1825	21.57	1833	22.00	1848	22.85	1862	23.68	1877	24.54
23000	4449	1865	22.15	1873	22.59	1881	23.05	1889	23.50	1896	23.93	1903	24.36	1911	24.80	1925	25.71	1939	26.57	1953	27.45
24000	4643	1945	25.08	1953	25.59	1960	26.02	1968	26.50	1975	26.95	1982	27.40	1989	27.85	2003	28.79	2016	29.70	2030	30.60
26000	5029	2105	31.72	2112	32.22	2119	32.72	2126	33.23	2133	33.76	2139	34.24	2145	34.72	2158	35.71	2171	36.73	2184	37.72
Volume O.Vel	2"SP		2-1/2"SP		3"SP		3-1/2"SP		4"SP		4-1/2"SP		5"SP		5-1/2"SP		6"SP		6-1/2"SP		
CFM	FPM	RPM	BHP	RPM	BHP	RPM	BHP	RPM	BHP	RPM	BHP	RPM	BHP	RPM	BHP	RPM	BHP	RPM	BHP	RPM	BHP
5000	967	770	1.88																		
6000	1161	821	2.34																		
7000	1354	868	2.81	882	2.86	937	3.38														
8000	1548	919	3.35	931	3.43	988	4.06	1038	4.66	1085	5.25										
9000	1741	976	4.01	979	4.04	1036	4.75	1088	5.46	1137	6.18	1180	6.85	1220	7.52	1262	8.23				
10000	1934	1037	4.80	1030	4.72	1084	5.49	1135	6.28	1183	7.07	1230	7.88	1273	8.68	1311	9.44	1348	10.19	1385	10.97
11000	2128	1102	5.70																		
12000	2321	1168	6.70	1087	5.55	1136	6.32	1184	7.17	1232	8.04	1276	8.92	1319	9.80	1361	10.70	1400	11.59	1437	12.47
13000	2515	1236	7.82	1148	6.51	1194	7.34	1237	8.18	1281	9.08	1325	10.04	1368	11.01	1408	11.97	1447	12.94	1484	13.92
14000	2708	1305	9.09	1212	7.60	1254	8.50	1296	9.39	1336	10.31	1376	11.27	1417	12.28	1457	13.34	1495	14.39	1531	15.43
15000	2902	1376	10.49	1277	8.82	1317	9.79	1357	10.75	1395	11.72	1432	12.70	1469	13.72	1506	14.78	1543	15.89	1580	17.04
16000	3095	1447	12.06	1345	10.15	1383	11.21	1420	12.26	1456	13.30	1492	14.34	1527	15.39	1561	16.46	1595	17.57	1630	18.73
17000	3288	1520	13.80	1413	11.63	1449	12.77	1485	13.91	1520	15.03	1554	16.15	1587	17.26	1620	18.38	1652	19.50	1683	20.66
18000	3482	1593	15.71	1483	13.27	1518	14.49	1551	15.71	1584	16.91	1617	18.11	1649	19.30	1680	20.49	1711	21.66	1741	22.86
19000	3675	1667	17.82	1554	15.09	1587	16.38	1620	17.68	1651	18.96	1682	20.24	1713	21.51	1743	22.78	1772	24.02	1801	25.27
20000	3869	1741	20.13	1626	17.07	1657	18.43	1688	19.80	1719	21.19	1748	22.54	1778	23.88	1807	25.25	1835	26.57	1863	27.88
21000	4062	1816	22.63	1698	19.26	1729	20.70	1758	22.12	1787	23.56	1816	25.02	1844	26.45	1872	27.87	1899	29.32	1926	30.69
22000	4256	1891	25.36	1771	21.63	1801	23.13	1829	24.66	1857	26.17	1885	27.67	1912	29.20	1938	30.70	1965	32.21	1991	33.71
23000	4449	1967	28.35	1845	24.22	1873	25.82	1901	27.38	1928	28.97	1955	30.57	1980	32.13	2006	33.75	2031	35.31	2056	36.91
24000	4643	2043	31.54	1920	27.05	1946	28.68	1973	30.34	1999	32.01	2025	33.65	2050	35.34	2074	36.97	2099	38.66	2123	40.28
26000	5029	2196	38.69	2020	31.80	2046	33.55	2071	35.25	2096	37.02	2120	38.71	2144	40.48	2167	42.17	2191	43.96	2219	47.77
				2095	35.19	2119	36.96	2144	38.78	2167	40.56	2191	42.38	2214	44.16	2237	46.00	2259	47.77		
				2220	40.71	2244	42.63	2267	44.64	2290	46.53	2313	48.52	2334	50.42	2356	52.39	2378	54.32	2399	56.26
Volume O.Vel	7"SP		8"SP		9"SP		10"SP		12"SP		14"SP		16"SP		18"SP		20"SP		21"SP		
CFM	FPM	RPM	BHP	RPM	BHP	RPM	BHP	RPM	BHP	RPM	BHP	RPM	BHP	RPM	BHP	RPM	BHP	RPM	BHP	RPM	BHP
9000	1741	1422	11.77																		
10000	1934	1470	13.29	1536	14.98	1604	16.81														
11000	2128	1521	14.93	1587	16.81	1647	18.63	1707	20.51												
12000	2321	1567	16.48	1636	18.63	1700	20.75	1757	22.74	1866	26.80										
13000	2515	1616	18.18	1683	20.45	1747	22.74	1808	25.06	1915	29.46	2015	33.82								
14000	2708	1664	19.93	1731	22.38	1794	24.83	1854	27.29	1966	32.23	2064	36.91	2156	41.58						
15000	2902	1715	21.87	1779	24.39	1842	27.01	1901	29.62	2013	34.89	2116	40.18	2206	45.15	2291	50.09	2381	55.51		
16000	3095	1771	24.08	1831	26.60	1891	29.29	1950	32.07	2060	37.66	2163	43.27	2258	48.89	2342	54.13	2421	59.34	2462	62.08
17000	3288	1830	26.54	1886	29.11	1942	31.79	1999	34.64	2108	40.56	2209	46.40	2305	52.42	2394	58.34	2472	63.86		
18000	3482	1891	29.23	1945	31.89	1998	34.60	2050	37.44	2156	43.51	2257	49.74	2350	55.95	2441	62.33				
19000	3675	1953	32.11	2005	34.89	2056	37.70	2106	40.57	2206	46.64	2305	53.17	2398	59.70	2486	66.28				
20000	3869	2016	35.18	2066	38.11	2116	41.04	2164	44.00	2258	50.10	2353	56.71	2446</							

Wheel Diameter = 33.00 in.
 Outlet Area = 6.26 sq. ft. inside
 Maximum BHP = 7.52 x (RPM/1000)³
 Tip Speed, fpm = 8.64 x RPM

Size

3300 sisw

Design 7610 Centrifugal Airfoil Fans

Class I RPM 1447
 Class II RPM 1769
 Class III RPM 2225

Volume O.Vel		1/4"SP		3/8"SP		1/2"SP		5/8"SP		3/4"SP		7/8"SP		1"SP		1-1/4"SP		1-1/2"SP		1-3/4"SP	
CFM	FPM	RPM	BHP	RPM	BHP	RPM	BHP	RPM	BHP	RPM	BHP	RPM	BHP	RPM	BHP	RPM	BHP	RPM	BHP	RPM	BHP
3000	479	272	0.15	310	0.21	344	0.28														
4000	639	315	0.23	346	0.31	377	0.39	405	0.48	431	0.57	456	0.66								
5000	799	363	0.34	390	0.44	415	0.53	440	0.63	465	0.73	488	0.84	510	0.95	551	1.18				
6000	959	413	0.49	439	0.61	461	0.72	483	0.83	503	0.95	524	1.07	545	1.19	584	1.44	620	1.70	654	1.98
7000	1118	465	0.68	488	0.82	510	0.95	530	1.09	548	1.21	566	1.35	584	1.48	620	1.76	654	2.05	687	2.35
8000	1278	518	0.91	539	1.07	560	1.23	579	1.39	596	1.54	613	1.69	629	1.84	661	2.14	692	2.46	723	2.78
9000	1438	573	1.21	592	1.38	610	1.56	628	1.74	646	1.92	662	2.09	677	2.26	706	2.59	734	2.93	762	3.28
10000	1598	628	1.57	645	1.76	662	1.95	679	2.15	695	2.35	711	2.55	726	2.75	754	3.12	780	3.49	805	3.87
11000	1757	684	2.01	700	2.21	716	2.42	731	2.63	746	2.85	761	3.07	776	3.29	803	3.72	828	4.14	851	4.54
12000	1917	741	2.52	755	2.74	770	2.97	784	3.20	798	3.43	812	3.67	826	3.91	852	4.39	876	4.85	899	5.30
13000	2077	797	3.13	811	3.36	825	3.60	838	3.85	851	4.10	864	4.35	877	4.61	902	5.12	926	5.64	948	6.15
14000	2237	855	3.83	867	4.07	880	4.33	892	4.59	905	4.86	917	5.13	929	5.40	953	5.95	976	6.51	998	7.07
15000	2397	912	4.63	924	4.89	936	5.16	948	5.44	959	5.72	971	6.00	982	6.29	1004	6.88	1026	7.47	1048	8.07
16000	2556	970	5.54	981	5.82	992	6.10	1003	6.40	1014	6.69	1025	6.99	1036	7.30	1057	7.92	1078	8.55	1098	9.18
17000	2716	1028	6.58	1038	6.87	1049	7.17	1059	7.47	1070	7.78	1080	8.10	1090	8.42	1110	9.07	1130	9.73	1149	10.40
18000	2876	1086	7.73	1096	8.04	1106	8.35	1116	8.67	1125	8.99	1135	9.33	1145	9.66	1164	10.34	1183	11.04	1201	11.74
19000	3036	1144	9.02	1154	9.34	1163	9.67	1172	10.01	1181	10.34	1191	10.69	1200	11.04	1218	11.75	1236	12.47	1254	13.21
20000	3195	1203	10.44	1212	10.79	1220	11.13	1229	11.48	1238	11.83	1247	12.19	1255	12.56	1273	13.29	1290	14.06	1307	14.82
21000	3355	1261	12.01	1270	12.38	1278	12.73	1286	13.09	1295	13.47	1303	13.84	1311	14.21	1328	14.99	1344	15.78	1360	16.57
22000	3515	1319	13.74	1328	14.12	1336	14.49	1344	14.87	1352	15.25	1360	15.64	1367	16.03	1383	16.84	1399	17.65	1415	18.49
23000	3675	1378	15.63	1386	16.02	1394	16.42	1401	16.80	1409	17.20	1416	17.61	1424	18.01	1439	18.84	1454	19.69	1469	20.54
24000	3834	1436	17.68	1444	18.09	1452	18.51	1459	18.91	1466	19.32	1473	19.74	1481	20.17	1495	21.02	1510	21.90	1524	22.78
26000	4154	1554	22.33	1561	22.77	1568	23.22	1575	23.67	1581	24.10	1588	24.54	1594	25.00	1608	25.91	1621	26.84	1635	27.80
28000	4473	1671	27.74	1677	28.21	1684	28.69	1691	29.18	1697	29.65	1703	30.12	1709	30.60	1722	31.57	1734	32.56	1746	33.55
30000	4793	1789	33.97	1795	34.48	1801	34.99	1807	35.50	1813	36.03	1819	36.52	1824	37.02	1836	38.05	1847	39.11	1859	40.15
Volume O.Vel		2"SP		2-1/2"SP		3"SP		3-1/2"SP		4"SP		4-1/2"SP		5"SP		5-1/2"SP		6"SP		6-1/2"SP	
CFM	FPM	RPM	BHP	RPM	BHP	RPM	BHP	RPM	BHP	RPM	BHP	RPM	BHP	RPM	BHP	RPM	BHP	RPM	BHP	RPM	BHP
7000	1118	718	2.65	776	3.29	860	4.51	911	5.27												
8000	1278	752	3.11	809	3.80	893	5.15	940	5.94	986	6.77	1030	7.62								
9000	1438	789	3.64	843	4.38	928	5.86	974	6.71	1018	7.58	1059	8.47	1099	9.39	1139	10.34				
10000	1598	830	4.25	880	5.04	965	6.66	1009	7.56	1052	8.49	1093	9.42	1131	10.38	1168	11.36	1205	12.38	1241	13.42
11000	1757	875	4.95	920	5.79	1006	7.56	1047	8.51	1087	9.48	1127	10.48	1165	11.49	1202	12.52	1237	13.57	1271	14.64
12000	1917	921	5.75	964	6.64	1006	7.56	1047	8.51	1087	9.48	1127	10.48	1165	11.49	1202	12.52	1237	13.57	1271	14.64
13000	2077	970	6.64	1010	7.60	1049	8.56	1087	9.57	1126	10.60	1163	11.64	1200	12.71	1236	13.80	1271	14.90	1304	16.01
14000	2237	1019	7.61	1058	8.67	1095	9.69	1131	10.73	1166	11.81	1202	12.91	1237	14.03	1271	15.16	1305	16.32	1338	17.50
15000	2397	1068	8.67	1107	9.84	1142	10.94	1176	12.03	1210	13.15	1243	14.30	1276	15.47	1309	16.66	1341	17.88	1373	19.10
16000	2556	1118	9.82	1156	11.09	1191	12.29	1224	13.46	1255	14.64	1287	15.83	1318	17.05	1349	18.30	1380	19.56	1410	20.82
17000	2716	1168	11.08	1205	12.43	1240	13.75	1272	15.02	1303	16.26	1333	17.51	1362	18.77	1392	20.08	1420	21.37	1449	22.69
18000	2876	1219	12.45	1255	13.88	1289	15.31	1321	16.69	1351	18.02	1380	19.33	1408	20.65	1436	21.99	1463	23.34	1491	24.71
19000	3036	1271	13.95	1306	15.47	1339	16.98	1370	18.48	1400	19.92	1428	21.31	1455	22.68	1482	24.08	1508	25.48	1534	26.89
20000	3195	1323	15.59	1356	17.16	1388	18.75	1419	20.34	1449	21.90	1477	23.42	1503	24.88	1529	26.32	1555	27.80	1579	29.25
21000	3355	1377	17.38	1408	19.12	1439	20.68	1469	22.35	1498	24.00	1526	25.62	1552	27.21	1577	28.74	1602	30.26	1626	31.81
22000	3515	1430	19.31	1460	21.01	1490	22.74	1519	24.49	1548	26.26	1575	27.97	1601	29.64	1626	31.31	1650	32.90	1674	34.50
23000	3675	1484	21.42	1513	23.19	1542	24.98	1570	26.78	1597	28.60	1624	30.44	1650	32.25	1675	33.97	1699	35.72	1722	37.38
24000	3834	1538	23.69	1566	25.51	1594	27.35	1621	29.24	1648	31.16	1674	33.04	1699	34.93	1724	36.85	1748	38.62	1771	40.44
26000	4154	1648	28.74	1674	30.70	1700	32.68	1725	34.67	1750	36.71	1775	38.75	1799	40.80	1823	42.91	1846	44.90	1869	46.98
28000	4473	1758	34.58	1783	36.63	1807	38.74	1831	40.88	1854	43.02	1878	45.23	1900	47.38	1923	49.62	1945	51.80	1967	54.06
30000	4793	1870	41.22	1893	43.41	1916	45.62	1938	47.88	1960	50.17	1982	52.45	2004	54.78	2025	57.10	2046	59.46	2067	61.82
Volume O.Vel		7"SP		8"SP		9"SP		10"SP		12"SP		14"SP		16"SP		18"SP		20"SP		21"SP	
CFM	FPM	RPM	BHP	RPM	BHP	RPM	BHP	RPM	BHP	RPM	BHP	RPM	BHP	RPM	BHP	RPM	BHP	RPM	BHP	RPM	BHP
12000	1917	1305	15.75	1371	18.01																
13000	2077	1336	17.14	1399	19.47	1460	21.91														
14000	2237	1371	18.70	1431	21.10	1489	23.58	1546	26.16												
15000	2397	1405	20.33	1465	22.88	1523	25.47	1577	28.10	1683	33.63										
16000	2556	1440	22.12	1499	24.75	1556	27.45	1610	30.19	1712	35.82	1811	41.82								
17000	2716	1478	24.05	1535	26.77	1590	29.57	1644	32.42	1744	38.24	1839	44.36	1932	50.70						
18000	2876	1518	26.13	1573	28.95	1626	31.84	1678	34.79	1778	40.84	1870	47.09	1959	53.56	2046	60.30				
19000	3036	1560	28.35	1612	31.28	1663	34.27	1714	37.32	1812	43.59	1903	50.03	1989	56.66	2072	63.48	2155	70.60		
20000	3195	1604	30.74	1654	33.77	1703	36.87	1751	40.02	1846	46.49	1937	53.15	2022	59.96	2103	66.90	2181	74.11	2221	77.84
21000	3355	1650	33.32	1697	36.44	1744	39.64	1790	42.89	1882	49.55	1971	56.42	2056	63.45	2135	70.56	2211	77.89		
22000	3515	1697	36.10	1742	39.32	1787															

Wheel Diameter = 36.50 in.
 Outlet Area = 7.65 sq. ft. inside
 Maximum BHP = 12.5 x (RPM/1000)³
 Tip Speed, fpm = 9.56 x RPM

Class I RPM 1307
 Class II RPM 1598
 Class III RPM 2010

Size

3650 SISW

Design 7610 Centrifugal Airfoil Fans

Volume O.Vel		1/4"SP		3/8"SP		1/2"SP		5/8"SP		3/4"SP		7/8"SP		1"SP		1-1/4"SP		1-1/2"SP		1-3/4"SP	
CFM	FPM	RPM	BHP	RPM	BHP	RPM	BHP	RPM	BHP	RPM	BHP	RPM	BHP	RPM	BHP	RPM	BHP	RPM	BHP	RPM	BHP
5000	653	288	0.29	316	0.39	343	0.49	369	0.60	392	0.71	414	0.82								
6000	784	324	0.41	349	0.52	372	0.63	395	0.75	417	0.88	438	1.01	458	1.14	495	1.41				
7000	914	361	0.54	384	0.68	405	0.81	425	0.94	445	1.08	464	1.22	483	1.37	519	1.67	552	1.98	584	2.31
8000	1045	398	0.71	421	0.87	441	1.03	459	1.18	476	1.33	494	1.48	511	1.64	545	1.97	577	2.30	607	2.65
9000	1175	437	0.92	458	1.10	477	1.28	495	1.45	511	1.62	527	1.79	542	1.96	573	2.31	603	2.67	633	3.05
10000	1306	477	1.17	496	1.37	514	1.57	531	1.77	547	1.96	562	2.15	576	2.33	604	2.71	632	3.10	659	3.50
11000	1437	517	1.48	535	1.69	551	1.90	568	2.12	583	2.34	598	2.56	612	2.76	638	3.17	663	3.58	688	4.01
12000	1567	558	1.83	574	2.06	590	2.29	605	2.53	620	2.77	634	3.01	648	3.24	673	3.69	697	4.13	720	4.58
13000	1698	599	2.24	614	2.49	629	2.74	643	2.99	657	3.25	671	3.51	684	3.77	709	4.27	732	4.75	754	5.23
14000	1828	641	2.72	655	2.98	669	3.24	682	3.52	695	3.79	708	4.07	721	4.35	746	4.91	768	5.44	789	5.96
15000	1959	683	3.27	696	3.54	709	3.82	722	4.11	734	4.40	746	4.70	758	4.99	782	5.60	804	6.18	825	6.75
16000	2090	725	3.89	737	4.17	749	4.47	762	4.77	773	5.08	785	5.39	796	5.71	819	6.34	841	6.98	861	7.61
17000	2220	767	4.59	779	4.89	790	5.20	802	5.51	813	5.84	824	6.17	835	6.50	856	7.17	877	7.85	897	8.53
18000	2351	810	5.37	821	5.69	832	6.01	842	6.34	853	6.68	864	7.02	874	7.38	895	8.08	915	8.80	934	9.52
19000	2481	853	6.24	863	6.57	873	6.91	883	7.26	893	7.61	904	7.97	913	8.33	933	9.07	952	9.82	971	10.58
20000	2612	895	7.21	905	7.55	915	7.90	925	8.26	934	8.63	944	9.01	953	9.39	972	10.16	991	10.94	1009	11.73
22000	2873	981	9.43	990	9.81	999	10.19	1008	10.58	1016	10.98	1025	11.39	1034	11.79	1051	12.63	1068	13.48	1085	14.33
24000	3134	1067	12.09	1075	12.50	1083	12.91	1092	13.33	1100	13.76	1108	14.19	1116	14.63	1132	15.52	1147	16.43	1163	17.36
26000	3395	1153	15.21	1161	15.67	1168	16.10	1176	16.55	1183	17.01	1191	17.47	1198	17.93	1213	18.89	1228	19.86	1242	20.84
28000	3657	1240	18.85	1247	19.33	1254	19.81	1261	20.28	1268	20.77	1275	21.26	1282	21.75	1295	22.76	1309	23.79	1323	24.84
30000	3918	1326	23.03	1333	23.54	1340	24.07	1346	24.57	1353	25.08	1359	25.60	1365	26.13	1378	27.19	1391	28.28	1404	29.38
32000	4179	1413	27.81	1419	28.35	1426	28.90	1432	29.45	1438	29.98	1444	30.53	1450	31.08	1462	32.21	1474	33.35	1486	34.52
34000	4440	1500	33.20	1506	33.78	1512	34.36	1518	34.95	1523	35.52	1529	36.09	1534	36.67	1546	37.86	1557	39.05	1568	40.27
36000	4701	1587	39.27	1592	39.87	1598	40.49	1603	41.11	1609	41.73	1614	42.33	1619	42.93	1630	44.17	1641	45.44	1651	46.70
38000	4963	1674	46.04	1679	46.68	1684	47.32	1689	47.97	1695	48.64	1700	49.28	1705	49.91	1715	51.19	1725	52.52	1735	53.85
Volume O.Vel		2"SP		2-1/2"SP		3"SP		3-1/2"SP		4"SP		4-1/2"SP		5"SP		5-1/2"SP		6"SP		6-1/2"SP	
CFM	FPM	RPM	BHP	RPM	BHP	RPM	BHP	RPM	BHP	RPM	BHP	RPM	BHP	RPM	BHP	RPM	BHP	RPM	BHP	RPM	BHP
8000	1045	636	3.01																		
9000	1175	660	3.44	712	4.23	761	5.09														
10000	1306	686	3.92	736	4.77	783	5.65	827	6.58												
11000	1437	713	4.45	762	5.35	808	6.29	850	7.26	891	8.27	931	9.32								
12000	1567	743	5.05	789	6.01	833	7.00	875	8.03	914	9.06	952	10.14	989	11.26						
13000	1698	775	5.72	818	6.73	860	7.78	900	8.85	940	9.95	977	11.09	1012	12.24	1046	13.42	1080	14.64		
14000	1828	809	6.47	849	7.53	888	8.62	927	9.76	965	10.90	1001	12.09	1036	13.29	1069	14.51	1102	15.77	1134	17.06
15000	1959	844	7.31	882	8.41	919	9.56	956	10.74	992	11.95	1027	13.18	1062	14.44	1095	15.72	1126	17.03	1157	18.34
16000	2090	880	8.21	917	9.39	951	10.58	986	11.81	1020	13.07	1054	14.36	1088	15.67	1120	17.01	1151	18.36	1181	19.72
17000	2220	916	9.19	952	10.46	985	11.70	1018	12.97	1051	14.29	1083	15.63	1115	16.99	1146	18.37	1177	19.77	1207	21.21
18000	2351	953	10.23	988	11.60	1020	12.92	1052	14.25	1082	15.61	1113	17.00	1143	18.41	1173	19.84	1203	21.30	1232	22.79
19000	2481	990	11.35	1024	12.82	1056	14.24	1086	15.64	1116	17.04	1145	18.47	1174	19.93	1202	21.42	1231	22.93	1259	24.47
20000	2612	1026	12.53	1061	14.13	1092	15.66	1122	17.13	1150	18.59	1178	20.07	1205	21.58	1233	23.11	1260	24.67	1287	26.26
22000	2873	1102	15.20	1134	16.95	1165	18.70	1194	20.38	1221	22.01	1247	23.61	1272	25.22	1298	26.87	1322	28.51	1347	30.19
24000	3134	1178	18.28	1209	20.17	1238	22.09	1266	23.99	1293	25.83	1318	27.63	1343	29.41	1366	31.13	1389	32.88	1412	34.68
26000	3395	1257	21.84	1285	23.86	1313	25.91	1339	27.98	1366	30.04	1391	32.06	1415	34.05	1437	35.92	1459	37.83	1481	39.71
28000	3657	1336	25.90	1363	28.06	1389	30.25	1414	32.44	1439	34.66	1463	36.88	1487	39.11	1509	41.19	1531	43.29	1552	45.32
30000	3918	1416	30.50	1441	32.77	1466	35.08	1490	37.44	1514	39.79	1537	42.16	1560	44.57	1582	46.89	1603	49.20	1624	51.46
32000	4179	1497	35.69	1521	38.11	1544	40.52	1567	42.98	1590	45.50	1612	47.99	1634	50.52	1655	53.09	1676	55.56	1697	58.11
34000	4440	1579	41.52	1601	44.01	1623	46.58	1645	49.19	1666	51.78	1688	54.46	1708	57.08	1729	59.79	1749	62.46	1769	65.17
36000	4701	1662	47.99	1683	50.62	1704	53.31	1724	56.00	1745	58.79	1765	61.51	1785	64.35	1804	67.11	1824	70.01	1843	72.78
38000	4963	1745	55.18	1765	57.95	1784	60.70	1804	63.59	1823	66.41	1843	69.36	1861	72.21	1880	75.21	1899	78.11	1917	81.12
Volume O.Vel		7"SP		8"SP		9"SP		10"SP		12"SP		14"SP		16"SP		18"SP		20"SP		21"SP	
CFM	FPM	RPM	BHP	RPM	BHP	RPM	BHP	RPM	BHP	RPM	BHP	RPM	BHP	RPM	BHP	RPM	BHP	RPM	BHP	RPM	BHP
14000	1828	1165	18.39																		
15000	1959	1186	19.68	1245	22.49																
16000	2090	1211	21.12	1267	23.97	1322	26.95														
17000	2220	1236	22.67	1291	25.59	1344	28.62	1395	31.77												
18000	2351	1261	24.30	1316	27.34	1368	30.45	1417	33.65	1515	40.40										
19000	2481	1287	26.03	1341	29.19	1392	32.40	1441	35.69	1535	42.54										
20000	2612	1314	27.87	1367	31.13	1418	34.46	1466	37.85	1558	44.85	1645	52.18								
22000	2873	1372	31.91	1421	35.36	1469	38.90	1517	42.51	1607	49.91	1690	57.55	1770	65.46	1849	73.71				
24000	3134	1435	36.45	1481	40.13	1526	43.88	1570	47.69	1657	55.48	1740	63.55	1816	71.72	1890	80.19	1963	88.99	1999	93.54
26000	3395	1502	41.60	1544	45.44	1586	49.38	1628	53.40	1710	61.64	1790	70.04	1866	78.76	1938	87.57	2007	96.57		
28000	3657	1572	47.36	1612	51.41	1651	55.53	1690	59.76	1767	68.33	1843	77.19	1							

Wheel Diameter = 40.25 in.
 Outlet Area = 9.31 sq. ft. inside
 Maximum BHP = 20.3 x (RPM/1000)³
 Tip Speed, fpm = 10.5 x RPM

Size

4025 SISW

Design 7610 Centrifugal Airfoil Fans

Class I RPM 1134
 Class II RPM 1450
 Class III RPM 1824

Volume O.Vel		1/4"SP		3/8"SP		1/2"SP		5/8"SP		3/4"SP		7/8"SP		1"SP		1-1/4"SP		1-1/2"SP		1-3/4"SP	
CFM	FPM	RPM	BHP	RPM	BHP	RPM	BHP	RPM	BHP	RPM	BHP	RPM	BHP	RPM	BHP	RPM	BHP	RPM	BHP	RPM	BHP
7000	752	286	0.5	309	0.6	331	0.7	352	0.9	373	1.0	392	1.2	410	1.3	445	1.7				
8000	859	313	0.6	335	0.7	354	0.9	374	1.0	392	1.2	411	1.4	428	1.5	461	1.9	492	2.3		
9000	967	341	0.7	362	0.9	380	1.1	397	1.3	415	1.4	432	1.6	448	1.8	480	2.2	510	2.6	537	3.0
10000	1074	369	0.9	389	1.1	407	1.3	423	1.5	439	1.7	454	1.9	470	2.1	500	2.5	529	2.9	556	3.3
11000	1181	398	1.1	417	1.4	434	1.6	450	1.8	465	2.0	479	2.2	493	2.4	521	2.8	548	3.3	575	3.7
12000	1289	428	1.4	445	1.6	461	1.9	477	2.1	492	2.3	505	2.5	518	2.8	544	3.2	569	3.7	594	4.2
13000	1396	458	1.7	474	1.9	489	2.2	505	2.4	519	2.7	532	2.9	545	3.2	569	3.7	592	4.2	616	4.7
14000	1504	488	2.0	503	2.3	518	2.5	532	2.8	546	3.1	559	3.4	572	3.7	595	4.2	617	4.7	639	5.2
15000	1611	519	2.4	533	2.7	547	3.0	560	3.3	573	3.6	586	3.9	599	4.2	621	4.7	642	5.3	663	5.8
16000	1718	549	2.8	563	3.1	576	3.4	589	3.7	601	4.0	614	4.4	626	4.7	648	5.3	669	5.9	689	6.5
17000	1826	581	3.3	593	3.6	606	3.9	618	4.3	630	4.6	642	4.9	653	5.3	675	6.0	696	6.6	715	7.2
18000	1933	612	3.8	624	4.2	636	4.5	647	4.8	659	5.2	670	5.6	681	5.9	703	6.6	723	7.3	741	8.0
20000	2148	675	5.1	685	5.5	696	5.8	707	6.2	717	6.6	728	7.0	738	7.4	758	8.2	777	9.0	796	9.8
22000	2363	738	6.6	748	7.0	758	7.4	767	7.8	777	8.2	786	8.6	796	9.1	814	9.9	833	10.8	850	11.7
24000	2577	802	8.4	811	8.9	820	9.3	829	9.7	837	10.2	846	10.6	855	11.1	872	12.0	889	12.9	906	13.9
26000	2792	866	10.6	874	11.0	882	11.5	890	11.9	899	12.4	907	12.9	915	13.4	931	14.4	947	15.4	963	16.4
28000	3007	930	13.1	937	13.5	945	14.0	953	14.5	960	15.0	968	15.5	976	16.0	991	17.1	1005	18.2	1020	19.2
30000	3222	994	15.9	1001	16.4	1008	16.9	1015	17.5	1023	18.0	1030	18.5	1037	19.1	1051	20.2	1065	21.3	1079	22.5
32000	3437	1058	19.2	1065	19.7	1072	20.2	1078	20.8	1085	21.4	1092	21.9	1098	22.5	1112	23.7	1125	24.9	1138	26.1
34000	3651	1123	22.8	1129	23.4	1136	24.0	1142	24.6	1148	25.2	1154	25.8	1161	26.4	1173	27.6	1186	28.8	1198	30.1
36000	3866	1187	26.9	1193	27.6	1200	28.2	1205	28.8	1211	29.4	1217	30.0	1223	30.7	1235	31.9	1247	33.3	1258	34.6
38000	4081	1252	31.5	1258	32.2	1264	32.9	1269	33.5	1275	34.1	1280	34.8	1286	35.5	1297	36.8	1308	38.1	1319	39.6
40000	4296	1316	36.6	1322	37.3	1328	38.0	1333	38.7	1338	39.4	1344	40.0	1349	40.7	1360	42.2	1370	43.6	1381	45.0
44000	4725	1446	48.5	1451	49.2	1456	50.0	1461	50.7	1466	51.5	1471	52.2	1476	52.9	1485	54.5	1495	56.0	1504	57.5
48000	5155	1576	62.6	1580	63.4	1585	64.2	1590	65.1	1594	65.9	1599	66.7	1603	67.5	1612	69.1	1621	70.8	1629	72.5
Volume O.Vel	2"SP		2-1/2"SP		3"SP		3-1/2"SP		4"SP		4-1/2"SP		5"SP		5-1/2"SP		6"SP		6-1/2"SP		
CFM	FPM	RPM	BHP	RPM	BHP	RPM	BHP	RPM	BHP	RPM	BHP	RPM	BHP	RPM	BHP	RPM	BHP	RPM	BHP	RPM	BHP
10000	1074	581	3.8	630	4.7																
11000	1181	600	4.2	646	5.2	691	6.2														
12000	1289	619	4.7	665	5.7	707	6.8	748	7.9												
13000	1396	639	5.2	684	6.3	725	7.4	764	8.6	802	9.8										
14000	1504	660	5.8	703	6.9	744	8.1	782	9.3	818	10.5	853	11.8	888	13.2						
15000	1611	683	6.4	724	7.6	764	8.8	801	10.1	837	11.4	871	12.7	904	14.1	936	15.5				
16000	1718	708	7.1	746	8.3	784	9.6	820	10.9	855	12.3	889	13.7	921	15.1	952	16.5	982	18.0	1013	19.5
17000	1826	733	7.9	769	9.1	805	10.5	840	11.8	875	13.2	908	14.7	939	16.1	969	17.6	999	19.1	1028	20.7
18000	1933	759	8.7	794	10.0	828	11.4	862	12.8	894	14.3	927	15.7	958	17.3	988	18.8	1017	20.4	1045	22.0
20000	2148	813	10.5	845	12.0	876	13.5	907	15.0	937	16.5	967	18.1	997	19.7	1026	21.4	1054	23.1	1082	24.8
22000	2363	867	12.6	899	14.2	928	15.9	956	17.5	984	19.1	1012	20.8	1039	22.5	1066	24.3	1093	26.1	1120	27.9
24000	2577	922	14.8	953	16.8	982	18.6	1008	20.3	1034	22.1	1060	23.9	1085	25.7	1111	27.6	1136	29.4	1160	31.3
26000	2792	978	17.4	1008	19.5	1036	21.6	1062	23.5	1087	25.4	1111	27.3	1135	29.2	1158	31.2	1181	33.2	1205	35.2
28000	3007	1035	20.3	1063	22.6	1090	24.8	1116	27.0	1141	29.1	1164	31.2	1186	33.2	1208	35.2	1230	37.3	1251	39.4
30000	3222	1092	23.6	1119	26.0	1145	28.4	1170	30.7	1195	33.1	1218	35.4	1239	37.6	1260	39.7	1281	42.0	1301	44.1
32000	3437	1151	27.3	1176	29.8	1201	32.3	1225	34.8	1249	37.4	1272	39.9	1293	42.3	1313	44.7	1334	47.0	1353	49.3
34000	3651	1210	31.4	1234	34.0	1258	36.7	1281	39.3	1304	42.0	1326	44.7	1347	47.4	1367	50.0	1387	52.5	1406	55.0
36000	3866	1270	35.9	1293	38.7	1315	41.4	1337	44.3	1359	47.1	1380	49.9	1401	52.8	1422	55.6	1441	58.3	1460	61.1
38000	4081	1330	40.9	1352	43.8	1374	46.7	1395	49.6	1415	52.6	1436	55.7	1456	58.6	1476	61.7	1495	64.6	1514	67.5
40000	4296	1391	46.5	1412	49.5	1432	52.5	1453	55.5	1473	58.6	1492	61.8	1512	65.0	1531	68.1	1550	71.3	1568	74.4
44000	4725	1514	59.1	1533	62.3	1552	65.6	1570	68.9	1589	72.3	1607	75.6	1625	79.1	1642	82.5	1660	86.0	1677	89.4
48000	5155	1638	74.1	1655	77.6	1672	81.0	1690	84.6	1707	88.2	1723	91.8	1740	95.5	1756	99.2	1773	102.9	1789	106.6
Volume O.Vel	7"SP		8"SP		9"SP		10"SP		12"SP		14"SP		16"SP		18"SP		20"SP		21"SP		
CFM	FPM	RPM	BHP	RPM	BHP	RPM	BHP	RPM	BHP	RPM	BHP	RPM	BHP	RPM	BHP	RPM	BHP	RPM	BHP	RPM	BHP
17000	1826	1056	22.3																		
18000	1933	1072	23.6	1126	27.0																
20000	2148	1108	26.5	1159	30.0	1207	33.7	1256	37.5												
22000	2363	1146	29.7	1195	33.5	1242	37.2	1287	41.1	1376	49.4										
24000	2577	1185	33.3	1233	37.2	1280	41.2	1324	45.3	1407	53.8	1488	62.7								
26000	2792	1227	37.2	1273	41.4	1318	45.6	1361	49.9	1443	58.8	1519	67.8	1594	77.4						
28000	3007	1273	41.5	1316	45.9	1358	50.3	1400	54.8	1480	64.1	1556	73.7	1626	83.4	1695	93.5				
30000	3222	1321	46.4	1362	50.9	1401	55.5	1441	60.2	1519	69.9	1593	79.8	1663	90.1	1728	100.5	1793	111.2	1823	116.7
32000	3437	1372	51.7	1410	56.4	1448	61.2	1485	66.1	1559	76.2	1630	86.5	1699	97.1	1765	107.9				
34000	3651	1424	57.4	1460	62.4	1496	67.4	1531	72.5	1601	82.9	1670	93.7	1737	104.6	1801	115.9				
36000	3866	1477	63.7	1512	68.9	1546	74.1	1580	79.4	1646	90.2	1712	101.4	1776	112.7						
38000	4081	1531	70.4	1565	75.9	1598	81.4	1630	86.9	1693	98.1	1756	109.7	1817	121.4						
40000	4296	1586	77.5	1620	83.5	1651	89.3	1682	95.0	1743	106.6										
44000	4725	1694	92.9	1727	9																

Wheel Diameter = 44.50 in.
 Outlet Area = 11.37 sq. ft. inside
 Maximum BHP = 33.1 x (RPM/1000)³
 Tip Speed, fpm = 11.7 x RPM

Class I RPM 1019
 Class II RPM 1305
 Class III RPM 1641

Size

4450 SISW

Design 7610 Centrifugal Airfoil Fans

Volume O.Vel		1/4"SP		3/8"SP		1/2"SP		5/8"SP		3/4"SP		7/8"SP		1"SP		1-1/4"SP		1-1/2"SP		1-3/4"SP	
CFM	FPM	RPM	BHP	RPM	BHP	RPM	BHP	RPM	BHP	RPM	BHP	RPM	BHP	RPM	BHP	RPM	BHP	RPM	BHP	RPM	BHP
8000	704	246	0.5	268	0.6	290	0.8	310	1.0	329	1.1	347	1.3	364	1.5	397	1.8				
9000	792	265	0.6	286	0.8	306	0.9	325	1.1	343	1.3	361	1.5	377	1.7	407	2.1	437	2.5		
10000	879	286	0.7	305	0.9	323	1.1	341	1.3	358	1.5	375	1.7	391	1.9	420	2.3	448	2.7	474	3.2
11000	967	306	0.9	324	1.1	342	1.3	358	1.5	374	1.7	390	1.9	405	2.1	434	2.6	461	3.1	486	3.5
12000	1055	328	1.1	345	1.3	361	1.5	376	1.7	391	2.0	406	2.2	420	2.4	448	2.9	475	3.4	500	3.9
13000	1143	350	1.3	365	1.5	381	1.7	395	2.0	409	2.2	423	2.5	437	2.7	463	3.2	489	3.8	513	4.3
14000	1231	372	1.5	387	1.8	401	2.0	415	2.3	428	2.5	441	2.8	454	3.1	480	3.6	504	4.2	528	4.7
15000	1319	394	1.8	408	2.0	422	2.3	435	2.6	448	2.9	460	3.1	473	3.4	496	4.0	520	4.6	542	5.2
16000	1407	416	2.1	430	2.4	443	2.6	455	2.9	468	3.2	480	3.5	491	3.8	514	4.4	536	5.0	558	5.7
18000	1583	462	2.8	474	3.1	486	3.4	497	3.7	509	4.1	520	4.4	530	4.7	551	5.4	572	6.1	592	6.8
20000	1759	508	3.7	519	4.0	530	4.4	540	4.7	551	5.1	561	5.4	571	5.8	590	6.5	609	7.3	628	8.0
22000	1935	554	4.7	564	5.1	574	5.5	584	5.9	594	6.2	603	6.6	613	7.0	631	7.8	648	8.6	666	9.4
24000	2111	600	6.0	610	6.4	620	6.8	629	7.2	638	7.6	647	8.0	655	8.5	672	9.3	689	10.2	705	11.1
26000	2287	647	7.4	656	7.9	665	8.3	674	8.8	682	9.2	690	9.7	699	10.1	715	11.1	730	12.0	745	12.9
28000	2463	694	9.1	703	9.6	711	10.1	719	10.6	727	11.0	735	11.5	743	12.0	758	13.0	772	14.0	787	15.0
30000	2638	742	11.1	750	11.6	757	12.1	765	12.6	773	13.1	780	13.6	787	14.2	801	15.2	815	16.3	829	17.3
32000	2814	789	13.3	796	13.8	804	14.4	811	14.9	818	15.5	825	16.0	832	16.6	846	17.7	859	18.8	872	19.9
34000	2990	837	15.8	844	16.3	850	16.9	857	17.5	864	18.1	871	18.7	877	19.3	890	20.4	903	21.6	915	22.8
36000	3166	884	18.6	891	19.2	897	19.8	904	20.4	910	21.0	917	21.6	923	22.3	935	23.5	947	24.8	959	26.0
38000	3342	932	21.7	938	22.3	944	23.0	950	23.6	957	24.3	963	24.9	969	25.6	980	26.9	992	28.2	1003	29.5
40000	3518	979	25.1	986	25.8	991	26.5	997	27.2	1003	27.9	1009	28.6	1015	29.2	1026	30.6	1037	32.0	1048	33.4
44000	3870	1075	33.1	1081	33.9	1086	34.7	1091	35.4	1097	36.1	1102	36.9	1107	37.7	1118	39.1	1128	40.7	1138	42.2
48000	4222	1171	42.7	1176	43.5	1181	44.4	1186	45.2	1191	46.0	1196	46.8	1201	47.6	1210	49.3	1219	50.9	1229	52.5
52000	4573	1267	54.0	1271	54.9	1276	55.8	1281	56.7	1286	57.6	1290	58.4	1294	59.3	1303	61.1	1312	62.8	1321	64.6
56000	4925	1363	67.1	1367	68.1	1371	69.0	1376	70.0	1380	71.0	1385	71.9	1389	72.8	1397	74.7	1405	76.6	1413	78.5
Volume O.Vel		2"SP		2-1/2"SP		3"SP		3-1/2"SP		4"SP		4-1/2"SP		5"SP		5-1/2"SP		6"SP		6-1/2"SP	
CFM	FPM	RPM	BHP	RPM	BHP	RPM	BHP	RPM	BHP	RPM	BHP	RPM	BHP	RPM	BHP	RPM	BHP	RPM	BHP	RPM	BHP
10000	879	501	3.7																		
11000	967	510	4.0	559	5.1																
12000	1055	523	4.4	567	5.5																
13000	1143	536	4.9	579	5.9	620	7.1														
14000	1231	550	5.3	592	6.5	631	7.7	669	8.9	707	10.3										
15000	1319	564	5.8	606	7.0	644	8.3	680	9.6	715	10.9	751	12.4								
16000	1407	579	6.3	620	7.6	658	9.0	693	10.3	726	11.7	759	13.1	792	14.6						
18000	1583	611	7.5	649	8.9	685	10.4	720	11.9	752	13.4	783	14.9	812	16.4	842	18.0	872	19.7	901	21.4
20000	1759	646	8.8	681	10.3	715	11.9	748	13.5	780	15.2	810	16.8	839	18.5	866	20.2	893	21.9	920	23.6
22000	1935	683	10.3	715	11.9	747	13.7	778	15.4	809	17.1	838	18.9	867	20.8	894	22.6	920	24.4	945	26.3
24000	2111	721	12.0	752	13.8	782	15.6	811	17.5	839	19.3	867	21.2	895	23.2	921	25.1	947	27.1	972	29.1
26000	2287	760	13.9	789	15.8	818	17.7	845	19.7	872	21.8	899	23.8	925	25.8	950	27.9	976	30.0	1000	32.1
28000	2463	801	16.0	828	18.1	855	20.1	881	22.2	907	24.4	932	26.5	957	28.7	981	30.9	1005	33.1	1028	35.3
30000	2638	842	18.4	868	20.6	894	22.8	919	25.0	943	27.2	967	29.5	990	31.8	1014	34.2	1036	36.5	1059	38.9
32000	2814	884	21.1	909	23.4	934	25.7	957	28.0	981	30.4	1003	32.8	1026	35.2	1048	37.7	1070	40.2	1091	42.6
34000	2990	927	24.0	951	26.4	974	28.9	997	31.4	1019	33.9	1041	36.4	1062	38.9	1083	41.5	1104	44.1	1125	46.7
36000	3166	971	27.3	993	29.8	1015	32.4	1037	35.0	1058	37.6	1079	40.3	1100	42.9	1120	45.6	1140	48.3	1160	51.0
38000	3342	1014	30.9	1036	33.5	1057	36.2	1078	38.9	1098	41.7	1119	44.5	1138	47.2	1158	50.0	1177	52.9	1196	55.7
40000	3518	1058	34.8	1079	37.6	1100	40.4	1120	43.2	1139	46.1	1158	49.0	1178	51.9	1196	54.8	1215	57.7	1233	60.7
44000	3870	1148	43.7	1167	46.7	1186	49.8	1205	52.9	1223	56.0	1240	59.1	1258	62.3	1275	65.4	1293	68.7	1309	71.8
48000	4222	1238	54.2	1256	57.5	1273	60.8	1291	64.2	1308	67.5	1324	70.9	1341	74.3	1357	77.7	1373	81.2	1389	84.5
52000	4573	1329	66.4	1346	69.9	1363	73.6	1378	77.1	1395	80.7	1410	84.3	1426	88.0	1441	91.6	1456	95.3	1470	98.9
56000	4925	1421	80.4	1437	84.3	1452	88.1	1468	92.0	1482	95.8	1497	99.7	1511	103.5	1526	107.4	1540	111.3	1554	115.2
Volume O.Vel		7"SP		8"SP		9"SP		10"SP		12"SP		14"SP		16"SP		18"SP		20"SP		21"SP	
CFM	FPM	RPM	BHP	RPM	BHP	RPM	BHP	RPM	BHP	RPM	BHP	RPM	BHP	RPM	BHP	RPM	BHP	RPM	BHP	RPM	BHP
20000	1759	946	25.4	999	29.2																
22000	1935	969	28.1	1017	31.9	1065	35.9														
24000	2111	997	31.1	1042	35.1	1086	39.2	1130	43.4												
26000	2287	1024	34.3	1069	38.6	1112	42.9	1153	47.3	1234	56.4										
28000	2463	1052	37.6	1097	42.2	1139	46.8	1179	51.4	1255	60.8	1331	70.8	1406	81.4						
30000	2638	1081	41.2	1125	46.1	1167	51.0	1207	55.9	1281	65.8	1351	75.8	1422	86.5	1492	97.8				
32000	2814	1112	45.1	1154	50.1	1195	55.3	1235	60.6	1309	71.0	1377	81.5	1442	92.3	1508	103.6	1574	115.5		
34000	2990	1145	49.3	1185	54.6	1224	59.9	1262	65.3	1336	76.5	1404	87.7	1467	98.7	1529	110.1	1590	122.0	1621	128.3
36000	3166	1179	53.8	1217	59.3	1255	64.9	1292	70.5	1363	82.1	1432	94.0	1494	105.6	1554	117.3	1612	129.4		
38000	3342	1214	58.5	1251	64.3	1287	70.2	1323	76.1	1392	88.0	1459	100.4	1522	112.7	1581	125.0	1637	137.4		
40000	3518	1251	63.7	1286	69.7	1321	75.8	1355	81.9	1422	94.3	1487	107.1	1549	120.0	1608	133.0				
44000	3870	1326	75.1	1359	81.6	1392	88.1	1424	94.8	1486	108.1	1547	121.8	1605	135.4						
48000	4222	1405	88.1	1435	95.0	1466	102.0	1495	109.1												

Wheel Diameter = 49.00 in.
 Outlet Area = 13.78 sq. ft. inside
 Maximum BHP = 53.6 x (RPM/1000)³
 Tip Speed, fpm = 12.8 x RPM

Size

4900 sisw

Design 7610 Centrifugal Airfoil Fans

Class I RPM 925
 Class II RPM 1184
 Class III RPM 1490

Volume O.Vel		1/4"SP		3/8"SP		1/2"SP		5/8"SP		3/4"SP		7/8"SP		1"SP		1-1/4"SP		1-1/2"SP		1-3/4"SP	
CFM	FPM	RPM	BHP	RPM	BHP	RPM	BHP	RPM	BHP	RPM	BHP	RPM	BHP	RPM	BHP	RPM	BHP	RPM	BHP	RPM	BHP
10000	725	228	0.6	248	0.8	267	1.0	285	1.2	302	1.4	318	1.6	333	1.8	362	2.3				
11000	798	242	0.7	261	0.9	279	1.1	296	1.4	313	1.6	328	1.8	343	2.1	371	2.5	397	3.0		
12000	870	257	0.9	275	1.1	292	1.3	308	1.5	324	1.8	339	2.0	354	2.3	380	2.8	405	3.3	430	3.8
13000	943	273	1.0	290	1.2	305	1.5	321	1.7	336	2.0	350	2.3	364	2.5	391	3.1	415	3.6	438	4.2
14000	1016	289	1.2	305	1.4	320	1.7	334	2.0	348	2.2	362	2.5	375	2.8	401	3.4	426	3.9	448	4.5
15000	1088	305	1.4	320	1.6	334	1.9	348	2.2	361	2.5	375	2.8	387	3.1	412	3.7	436	4.3	458	4.9
16000	1161	321	1.6	336	1.9	349	2.2	362	2.5	375	2.8	388	3.1	400	3.4	424	4.0	447	4.7	469	5.3
18000	1306	355	2.1	367	2.4	380	2.7	392	3.1	404	3.4	415	3.7	427	4.1	448	4.8	470	5.5	490	6.2
20000	1451	388	2.7	400	3.1	412	3.4	423	3.8	434	4.1	444	4.5	455	4.9	475	5.6	495	6.4	514	7.2
22000	1596	422	3.4	433	3.8	444	4.2	454	4.6	465	5.0	475	5.4	484	5.8	503	6.6	522	7.5	540	8.3
24000	1741	457	4.3	467	4.7	477	5.2	487	5.6	496	6.0	506	6.4	515	6.9	532	7.8	550	8.6	567	9.5
26000	1886	491	5.3	501	5.8	510	6.2	519	6.7	528	7.1	537	7.6	546	8.1	562	9.0	579	10.0	595	10.9
28000	2031	526	6.5	535	7.0	544	7.5	553	8.0	561	8.5	569	8.9	577	9.4	593	10.5	609	11.5	624	12.5
30000	2176	561	7.8	570	8.4	578	8.9	586	9.4	594	9.9	602	10.5	610	11.0	625	12.1	639	13.1	654	14.2
32000	2321	596	9.4	604	9.9	612	10.5	620	11.0	628	11.6	635	12.1	642	12.7	657	13.8	671	15.0	684	16.1
34000	2466	632	11.1	639	11.7	647	12.3	654	12.9	661	13.4	668	14.0	675	14.6	689	15.8	702	17.0	715	18.3
36000	2611	667	13.0	674	13.6	681	14.2	688	14.9	695	15.5	702	16.1	709	16.8	722	18.0	734	19.3	747	20.6
38000	2756	702	15.2	709	15.8	716	16.5	723	17.1	729	17.8	736	18.4	742	19.1	755	20.4	767	21.8	779	23.1
40000	2901	738	17.5	744	18.2	751	18.9	757	19.6	764	20.3	770	21.0	776	21.7	788	23.1	800	24.5	811	25.9
44000	3192	809	23.0	815	23.8	821	24.5	827	25.3	833	26.0	838	26.8	844	27.5	855	29.1	866	30.6	877	32.1
48000	3482	880	29.6	886	30.4	892	31.2	897	32.0	902	32.9	908	33.7	913	34.5	923	36.2	933	37.8	943	39.5
52000	3772	952	37.3	957	38.2	962	39.1	967	39.9	972	40.8	977	41.7	982	42.6	992	44.4	1001	46.2	1010	48.0
56000	4062	1024	46.3	1029	47.2	1034	48.2	1038	49.1	1043	50.1	1047	51.0	1052	52.0	1061	53.9	1070	55.8	1079	57.8
60000	4352	1095	56.6	1100	57.6	1105	58.7	1109	59.7	1113	60.7	1118	61.7	1122	62.7	1130	64.8	1139	66.8	1147	68.9
65000	4715	1185	71.6	1189	72.7	1194	73.8	1198	74.9	1202	76.1	1206	77.1	1210	78.2	1218	80.4	1226	82.7	1233	84.8
Volume O.Vel		2"SP		2-1/2"SP		3"SP		3-1/2"SP		4"SP		4-1/2"SP		5"SP		5-1/2"SP		6"SP		6-1/2"SP	
CFM	FPM	RPM	BHP	RPM	BHP	RPM	BHP	RPM	BHP	RPM	BHP	RPM	BHP	RPM	BHP	RPM	BHP	RPM	BHP	RPM	BHP
13000	943	461	4.7																		
14000	1016	469	5.1	511	6.4																
15000	1088	479	5.5	519	6.8	558	8.2														
16000	1161	490	6.0	528	7.3	565	8.7	601	10.3												
18000	1306	511	6.9	548	8.4	583	9.9	616	11.5	648	13.1	681	14.9								
20000	1451	533	8.0	569	9.6	604	11.3	635	12.9	665	14.6	694	16.4	724	18.2	753	20.1				
22000	1596	557	9.2	591	10.9	624	12.7	656	14.5	685	16.4	713	18.2	740	20.1	766	22.0	793	24.0	819	26.1
24000	1741	583	10.5	615	12.3	646	14.2	677	16.2	706	18.2	733	20.2	759	22.1	784	24.2	809	26.2	833	28.3
26000	1886	610	11.9	641	13.9	670	16.0	699	18.0	727	20.1	754	22.3	780	24.4	805	26.6	828	28.7	851	30.9
28000	2031	639	13.5	668	15.7	695	17.8	723	20.0	749	22.2	775	24.4	801	26.7	825	29.1	849	31.4	872	33.7
30000	2176	668	15.3	695	17.6	722	19.8	748	22.2	773	24.5	798	26.9	822	29.3	846	31.7	870	34.2	892	36.7
32000	2321	698	17.3	724	19.7	749	22.0	774	24.5	798	27.0	822	29.5	845	32.0	868	34.5	891	37.1	913	39.7
34000	2466	728	19.5	753	22.0	777	24.5	801	27.0	824	29.6	847	32.2	870	34.9	891	37.5	913	40.2	935	42.9
36000	2611	759	21.9	783	24.5	806	27.1	829	29.8	851	32.5	873	35.2	895	38.0	916	40.8	937	43.6	957	46.4
38000	2756	791	24.4	814	27.2	836	30.0	858	32.8	879	35.6	900	38.4	921	41.3	941	44.2	961	47.2	981	50.2
40000	2901	823	27.3	845	30.1	866	33.0	887	35.9	908	38.9	928	41.9	948	44.9	967	47.9	987	51.0	1006	54.1
44000	3192	887	33.7	908	36.8	928	39.9	947	43.1	966	46.3	985	49.5	1004	52.7	1022	56.0	1040	59.3	1058	62.6
48000	3482	953	41.1	972	44.5	991	47.9	1009	51.3	1027	54.8	1045	58.2	1062	61.7	1079	65.3	1096	68.7	1113	72.3
52000	3772	1020	49.8	1038	53.4	1055	57.0	1072	60.7	1089	64.4	1106	68.1	1122	71.8	1138	75.6	1154	79.4	1170	83.2
56000	4062	1087	59.7	1104	63.6	1120	67.4	1136	71.3	1152	75.3	1168	79.2	1183	83.2	1199	87.2	1213	91.2	1229	95.3
60000	4352	1155	71.0	1171	75.0	1186	79.2	1202	83.4	1217	87.5	1232	91.8	1246	95.9	1261	100.2	1275	104.5	1289	108.8
65000	4715	1241	87.0	1255	91.5	1270	96.0	1284	100.4	1298	104.9	1312	109.4	1326	114.0	1339	118.5	1353	123.1	1366	127.7
Volume O.Vel		7"SP		8"SP		9"SP		10"SP		12"SP		14"SP		16"SP		18"SP		20"SP		21"SP	
CFM	FPM	RPM	BHP	RPM	BHP	RPM	BHP	RPM	BHP	RPM	BHP	RPM	BHP	RPM	BHP	RPM	BHP	RPM	BHP	RPM	BHP
24000	1741	857	30.5	906	35.1																
26000	1886	874	33.1	918	37.7	964	42.6														
28000	2031	893	36.0	936	40.8	977	45.6	1019	50.8												
30000	2176	914	39.1	955	44.1	995	49.1	1033	54.3	1111	65.4										
32000	2321	935	42.4	976	47.6	1014	52.9	1051	58.2	1124	69.4	1197	81.5								
34000	2466	956	45.7	997	51.3	1035	56.9	1071	62.5	1140	73.9	1209	85.9	1277	98.8						
36000	2611	978	49.3	1017	55.1	1056	61.0	1092	66.9	1160	78.8	1224	91.0	1289	103.9	1353	117.5				
38000	2756	1001	53.1	1039	59.1	1076	65.3	1113	71.5	1180	84.0	1242	96.5	1304	109.6	1364	123.2	1425	137.6		
40000	2901	1025	57.2	1062	63.4	1098	69.8	1133	76.2	1201	89.4	1262	102.4	1321	115.8	1379	129.5	1436	143.9	1465	151.3
44000	3192	1076	66.0	1110	72.8	1144	79.6	1177	86.4	1242	100.5	1304	115.0	1361	129.3	1415	143.6	1467	158.2		
48000	3482	1129	75.9	1162	83.2	1194	90.5	1225	97.9	1286	112.8	1345	128.1	1402	143.6	1455	159.2				
52000	3772	1185	87.0	1216	94.7	1246	102.5	1275	110.4	1333	126.4	1389	142.4	1443	158.8						
56000	4062	1243	99.3	1272	107.5	1300	115.8	1328	124.1	1383	141.0	1436	158.2	1487	175.4						
60000	4352	1302	113.0	1330	121.7	1357	130.5	1383	139.3	14											

Wheel Diameter = 54.25 in.
 Outlet Area = 16.91 sq. ft. inside
 Maximum BHP = 89.1 x (RPM/1000)³
 Tip Speed, fpm = 14.2 x RPM

Class I RPM 836
 Class II RPM 1071
 Class III RPM 1347

Size

5425 SISW

Design 7610 Centrifugal Airfoil Fans

Volume O.Vel		1/4"SP		3/8"SP		1/2"SP		5/8"SP		3/4"SP		7/8"SP		1"SP		1-1/4"SP		1-1/2"SP		1-3/4"SP	
CFM	FPM	RPM	BHP	RPM	BHP	RPM	BHP	RPM	BHP	RPM	BHP	RPM	BHP	RPM	BHP	RPM	BHP	RPM	BHP	RPM	BHP
12000	710	203	0.7	221	1.0	239	1.2	255	1.4	271	1.7	285	1.9	299	2.2	326	2.7				
14000	828	225	1.0	241	1.2	257	1.5	272	1.8	286	2.0	301	2.3	314	2.6	338	3.2	362	3.8	385	4.5
16000	947	247	1.2	262	1.5	277	1.8	290	2.2	304	2.5	317	2.8	329	3.1	354	3.8	376	4.4	396	5.1
18000	1065	271	1.6	285	1.9	298	2.3	310	2.6	323	2.9	335	3.3	346	3.7	369	4.4	391	5.1	411	5.9
20000	1184	295	2.0	308	2.4	320	2.8	331	3.1	343	3.5	354	3.9	365	4.3	386	5.1	407	5.9	426	6.7
22000	1302	319	2.6	331	2.9	342	3.3	353	3.7	364	4.1	374	4.6	385	5.0	404	5.8	424	6.7	442	7.6
24000	1420	344	3.2	355	3.6	366	4.0	376	4.4	386	4.9	396	5.3	405	5.8	424	6.7	442	7.6	460	8.5
26000	1539	369	3.9	380	4.3	389	4.8	399	5.2	409	5.7	418	6.2	427	6.6	444	7.6	461	8.6	478	9.6
28000	1657	394	4.7	404	5.1	414	5.6	423	6.1	432	6.6	440	7.1	449	7.6	466	8.7	482	9.7	498	10.8
30000	1775	420	5.6	429	6.1	438	6.6	447	7.1	455	7.7	463	8.2	471	8.8	487	9.9	503	11.0	518	12.1
32000	1894	445	6.6	454	7.2	463	7.7	471	8.3	479	8.8	487	9.4	494	10.0	510	11.1	524	12.3	539	13.5
34000	2012	471	7.8	479	8.4	487	8.9	495	9.5	503	10.1	510	10.7	518	11.3	532	12.6	546	13.8	560	15.1
36000	2130	497	9.1	505	9.7	512	10.3	520	10.9	527	11.6	534	12.2	541	12.8	555	14.1	569	15.4	582	16.8
38000	2249	523	10.5	530	11.2	538	11.8	545	12.5	552	13.2	559	13.8	565	14.5	579	15.8	592	17.2	604	18.6
40000	2367	549	12.1	556	12.8	563	13.5	570	14.2	576	14.9	583	15.6	590	16.3	602	17.7	615	19.1	627	20.6
44000	2604	601	15.8	607	16.6	614	17.3	620	18.1	626	18.9	632	19.6	639	20.4	650	21.9	662	23.5	673	25.0
48000	2840	653	20.2	659	21.0	665	21.9	671	22.7	677	23.5	682	24.4	688	25.2	699	26.9	710	28.6	720	30.2
52000	3077	705	25.4	711	26.3	717	27.2	722	28.1	727	29.0	733	29.9	738	30.8	748	32.6	758	34.4	768	36.2
56000	3314	758	31.4	763	32.4	768	33.3	774	34.3	779	35.3	784	36.2	788	37.2	798	39.1	808	41.1	817	43.0
60000	3551	811	38.4	816	39.4	820	40.4	825	41.4	830	42.5	835	43.5	839	44.5	849	46.6	857	48.6	866	50.7
65000	3847	876	48.4	881	49.5	886	50.6	890	51.7	895	52.8	899	53.9	903	55.1	912	57.2	920	59.5	928	61.7
70000	4142	943	60.1	947	61.2	951	62.5	955	63.7	959	64.8	963	66.0	968	67.2	976	69.6	983	72.0	991	74.4
75000	4438	1009	73.5	1013	74.8	1017	76.1	1021	77.4	1025	78.6	1028	79.9	1032	81.1	1040	83.7	1047	86.2	1054	88.8
80000	4734	1075	88.8	1079	90.2	1082	91.5	1086	92.9	1090	94.3	1094	95.6	1097	97.0	1104	99.7	1111	102.5	1118	105.1
85000	5030	1141	106.2	1145	107.6	1148	109.0	1152	110.5	1155	112.0	1159	113.4	1162	114.8	1169	117.7	1175	120.6	1182	123.5
Volume O.Vel		2"SP		2-1/2"SP		3"SP		3-1/2"SP		4"SP		4-1/2"SP		5"SP		5-1/2"SP		6"SP		6-1/2"SP	
CFM	FPM	RPM	BHP	RPM	BHP	RPM	BHP	RPM	BHP	RPM	BHP	RPM	BHP	RPM	BHP	RPM	BHP	RPM	BHP	RPM	BHP
16000	947	416	5.8																		
18000	1065	430	6.6	466	8.2	502	9.9														
20000	1184	445	7.5	480	9.2	512	10.9	545	12.8												
22000	1302	461	8.5	495	10.3	526	12.1	556	14.0	585	16.0	615	18.2								
24000	1420	477	9.5	510	11.5	541	13.5	570	15.5	597	17.5	624	19.6	651	21.9						
26000	1539	495	10.6	526	12.7	557	14.9	585	17.0	611	19.2	637	21.4	662	23.6	687	26.0	712	28.5		
28000	1657	513	11.9	543	14.1	572	16.3	600	18.6	627	21.0	651	23.3	675	25.6	698	28.0	722	30.5	745	33.1
30000	1775	532	13.2	561	15.6	589	17.9	616	20.3	642	22.8	667	25.3	690	27.8	713	30.3	735	32.8	756	35.4
32000	1894	553	14.7	580	17.2	607	19.7	632	22.2	658	24.8	682	27.4	706	30.1	728	32.7	749	35.4	770	38.0
34000	2012	573	16.3	600	18.9	625	21.5	650	24.2	674	26.9	698	29.6	721	32.4	743	35.2	764	38.0	785	40.9
36000	2130	595	18.1	620	20.8	644	23.5	668	26.3	691	29.1	714	32.0	736	34.8	758	37.8	780	40.8	800	43.8
38000	2249	617	20.0	641	22.8	664	25.7	687	28.6	710	31.5	731	34.5	753	37.5	774	40.5	795	43.6	816	46.8
40000	2367	639	22.0	662	25.0	685	28.0	707	31.0	728	34.0	750	37.1	770	40.3	791	43.4	811	46.6	831	49.9
44000	2604	684	26.6	706	29.8	727	33.0	748	36.3	768	39.6	788	43.0	807	46.4	826	49.8	845	53.2	864	56.7
48000	2840	731	31.9	751	35.4	771	38.8	790	42.4	809	45.9	827	49.5	846	53.1	864	56.8	882	60.5	899	64.2
52000	3077	778	38.0	797	41.7	816	45.4	834	49.2	852	53.0	869	56.8	887	60.7	903	64.6	920	68.5	937	72.5
56000	3314	826	45.0	844	48.9	862	52.9	879	56.9	896	60.9	912	65.0	929	69.2	945	73.2	960	77.4	976	81.7
60000	3551	875	52.8	892	57.0	909	61.3	925	65.5	941	69.8	956	74.1	972	78.5	987	82.8	1002	87.2	1017	91.7
65000	3847	937	64.0	952	68.5	968	73.0	983	77.6	998	82.2	1013	86.8	1028	91.5	1042	96.1	1056	100.9	1070	105.6
70000	4142	999	76.8	1014	81.7	1028	86.5	1043	91.3	1057	96.3	1071	101.2	1085	106.2	1098	111.1	1111	116.2	1124	121.2
75000	4438	1062	91.4	1076	96.5	1089	101.7	1103	106.9	1116	112.1	1130	117.4	1142	122.6	1155	127.9	1168	133.2	1180	138.6
80000	4734	1125	107.8	1138	113.3	1151	118.8	1164	124.3	1177	129.8	1189	135.4	1201	140.9	1213	146.6	1225	152.1	1237	157.9
85000	5030	1188	126.3	1201	132.1	1213	137.9	1226	143.8	1237	149.6	1249	155.4	1261	161.3	1272	167.2	1284	173.2	1295	179.1
Volume O.Vel		7"SP		8"SP		9"SP		10"SP		12"SP		14"SP		16"SP		18"SP		20"SP		21"SP	
CFM	FPM	RPM	BHP	RPM	BHP	RPM	BHP	RPM	BHP	RPM	BHP	RPM	BHP	RPM	BHP	RPM	BHP	RPM	BHP	RPM	BHP
28000	1657	768	35.8																		
30000	1775	777	38.1																		
32000	1894	790	40.8	821	43.7																
34000	2012	805	43.7	830	46.4	871	52.4														
36000	2130	820	46.8	843	49.4	881	55.4	919	61.7												
				857	52.7	893	58.8	929	65.1	1000	78.7										
38000	2249	835	50.0	872	56.2	907	62.5	941	68.9	1009	82.6										
40000	2367	850	53.2	888	59.8	922	66.4	955	73.0	1020	86.8	1084	101.4								
44000	2604	882	60.2	918	67.3	953	74.5	985	81.8	1047	96.2	1105	111.2	1163	127.0						
48000	2840	916	67.9	950	75.5	983	83.1	1016	91.0	1077	106.7	1133	122.6	1186	138.5	1239	155.3	1292	173.0	1319	182.3
52000	3077	953	76.5	985	84.6	1017	92.7	1047	100.9	1107	117.8	1163	134.7	1215	151.7	1264	169.0	1313	186.8	1337	195.8
56000	3314	992	85.8	1022	94.4	1052	103.0	1081	111.7	1138	129.3	1193	147.6	1245	165.8	1293	183.9	1339	202.2		
60000	3551	1032	96.1	1061	105.1	1089	114.3	1117	123.5	1171	142.1	1224	160.9	1275	180.5						

Northern Blower Inc. certifies that the product shown herein is licensed to bear the AMCA Seal. Fan Sound Ratings are based on tests and procedures in accordance with AMCA Publication 211 and AMCA Publication 311, and comply with the requirements of the AMCA Certified Ratings Program.

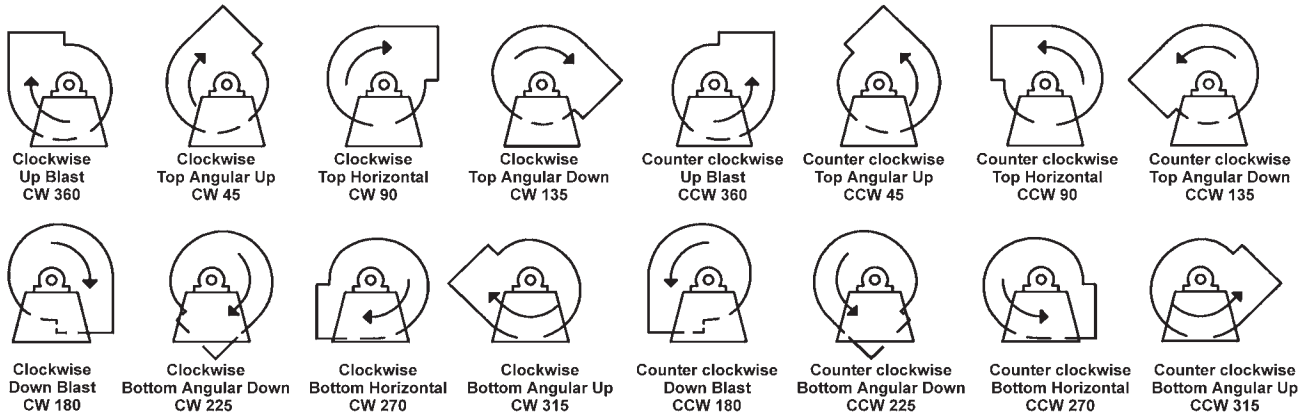
Fan sound data testing was conducted according to AMCA Standard 300 in an AMCA Registered Laboratory. The Certified Sound Ratings Seal provides increased assurance that the published sound ratings are both reliable and accurate.

Sound data was obtained in accordance with AMCA Standard 300, Reverberant Room Method for Sound Testing of Fans, published in accordance with AMCA Standard 301, Methods for Calculating Fan Sound Ratings from Laboratory Test data.

Upon request Northern Blower will provide Sound Level Ratings for any fan selection from this catalogue. Refer also to the Northern Blower Sound Bulletin.

Fan Geometry

Designations for Rotation and Discharge of Centrifugal Fans



Notes:

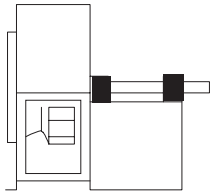
- 1) Direction of rotation is determined from the drive side of the fan.
- 2) On single inlet fans, the drive side is always considered as the side opposite the fan inlet.
- 3) On double inlet fans with drives on both sides, the drive side is that with the higher powered drive unit.
- 4) Direction of discharge is determined in accordance with the diagrams. Angle of discharge is referred to the vertical axis of the fan and designated in degrees from such standard reference axis. Angle of discharge may be any intermediate angle as required.
- 5) For a fan inverted for ceiling suspension, or side wall mounting, the direction of rotation and discharge is determined when the fan is resting on the floor.

Reprinted by permission of the Air Movement & Control Association, Inc., 30 West University Drive, Arlington Heights, IL, 60004-1893, U.S.A.

Centrifugal Fan Arrangements

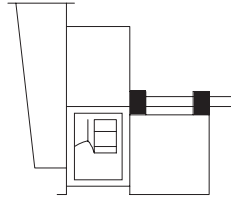
SW - Single Width
SI - Single Inlet

DW - Double Width
DI - Double Inlet



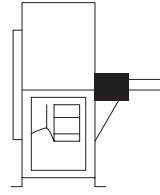
1 SWSI

For belt drive or direct connection. Impeller overhung. Two bearings on base.



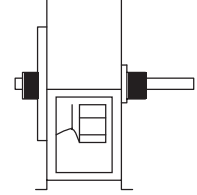
1 SWSI c/w BOX

For belt drive or direct connection. Impeller overhung. Two bearings on base. Inlet box may be self-supporting.



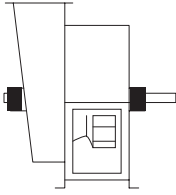
2 SWSI

For belt drive or direct connection. Impeller overhung. Bearings in bracket supported by fan housing.



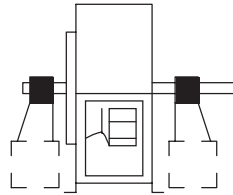
3 SWSI

For belt drive or direct connection. One bearing on each side and supported by fan housing.



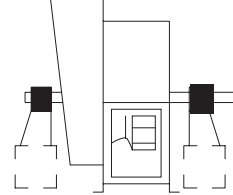
3 SWSI c/w BOX

For belt drive or direct connection. One bearing on each side and supported by fan housing and inlet box. Shaft extending through inlet box.



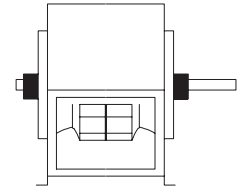
3 SWSI c/w IND. PED.

For belt drive or direct connection. Housing is self-supporting. One bearing on each side supported by independent pedestals.



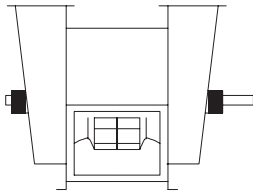
3 SWSI c/w BOX & IND. PED.

For belt drive or direct connection. Housing is self-supporting. One bearing on each side and supported by independent pedestals with shaft extending through inlet box.



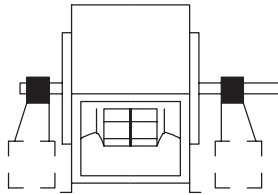
3 DWDI

For belt drive or direct connection. One bearing on each side and supported by fan housing.



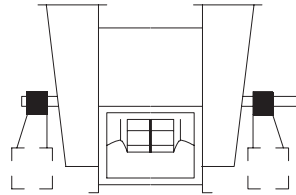
3 DWDI c/w BOXES

For belt drive or direct connection. One bearing on each side and supported by inlet boxes. Shaft extending through inlet boxes.



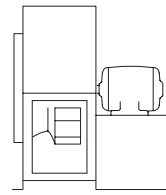
3 DWDI c/w IND. PED.

For belt drive or direct connection. Housing is self-supporting. One bearing on each side and supported by independent pedestals.



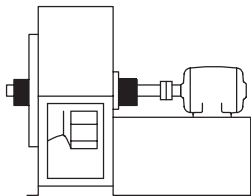
3 DWDI c/w BOXES & IND. PED.

For belt drive or direct connection. Housing is self-supporting. One bearing on each side supported by independent pedestals with shaft extending through inlet box.



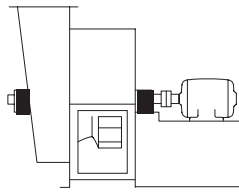
4 SWSI

For direct drive. Impeller overhung on prime mover shaft. No bearings on fan. Prime mover base mounted or integrally directly connected.



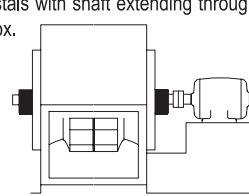
7 SWSI

For belt drive or direct connection. Arrangement 3 plus base for prime mover.



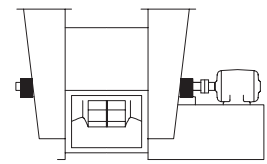
7 SWSI c/w BOX

For belt drive or direct connection. Arrangement 3 plus base for prime mover. Shaft extending through inlet box.



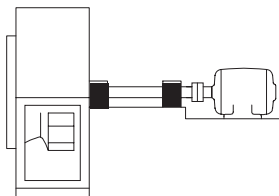
7 DWDI

For belt drive or direct connection. Arrangement 3 plus base for prime mover.



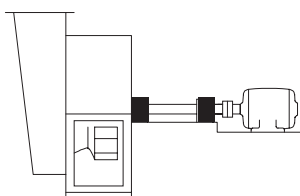
7 DWDI c/w BOXES

For belt drive or direct connection. Arrangement 3 plus base for prime mover. Shaft extending through inlet box.



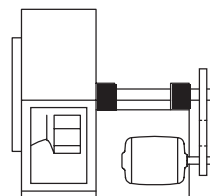
8 SWSI

For belt drive or direct connection. Arrangement 1 plus extended base for prime mover.



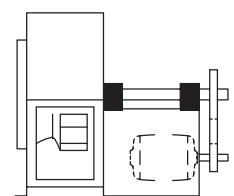
8 SWSI c/w BOX

For belt drive or direct connection. Arrangement 1 plus extended base for prime mover.



9 SWSI

For belt drive. Impeller overhung, two bearings, with prime mover outside base.



10 SWSI

For belt drive. Impeller overhung, two bearings, with prime mover inside base.

Reprinted by permission of the Air Movement & Control Association, Inc., 30 West University Drive, Arlington Heights, IL, 60004-1893, U.S.A.



Northern Blower Inc.
901 Regent Avenue West
Winnipeg, Manitoba
Canada R2C 2Z8
☎ 204.222.4216
☎ 204.222.7601
✉ info@northernblower.com
🌐 www.northernblower.com